



PC-1

Revamping of THQ Hospital, Liaquatpur District Rahim Yar Khan

ORIGINAL APPROVED COST	PKR Million. 315.332/-
ORIGINAL APPROVED GESTATION	72 Months Till June 2025
APPROVAL FORUM	DDSC (DDSC)

1. NAME OF THE PROJECT

Revamping of THQ Hospital, Liaquatpur District Rahim Yar Khan

2. LOCATION OF THE PROJECT

2.1. DISTRICT(S)

I. RAHIM YAR KHAN

2.2. TEHSIL(S)

I. LIAQUATPUR

3. AUTHORITIES RESPONSIBLE FOR

3.1. SPONSORING AGENCY

- PRIMARY AND SECONDARY HEALTH CARE

3.2. EXECUTION AGENCY

- PRIMARY AND SECONDARY HEALTH CARE

3.3. OPERATIONS AND MAINTENANCE AGENCY

- PRIMARY AND SECONDARY HEALTH CARE

3.4. CONCERNED FEDERAL MINISTRY

- NATIONAL HEALTH SERVICES, REGULATIONS AND COORDINATION

3	AUTHORITIES RESPONSIBLE	
	3.1 Sponsoring	Government of the Punjab, Primary and Secondary Healthcare Department
	3.2 Execution	PMU for Revamping Program of Primary and Secondary Healthcare Department, District Health Councils and C&W Department.
	3.3 Operation & Maintenance	PMU for Revamping Program of Primary and Secondary Healthcare Department and District Health Authority
	3.4 Concerned Federal Ministry	Ministry of National Health Services, Regulation and Coordination Pakistan

4. PLAN PROVISION

Sr #	Description
1	Source of Funding: Scheme Listed in ADP CFY
2	Proposed Allocation: 0.000
3	GS No: 5283
4	Total Allocation: 0.000
5	Funds Diverted: 0.000
6	Balance Funds: 0.000
7	Comments: Funded out of block provision reflected at G.S No.658 with an allocation of Rs. 1,800 million (Capital = Rs. 1.300 Million & Revenue = Rs. 500 Million).

5. PROJECT OBJECTIVES

attached

5. Project objectives and its relationship with Sectorial Objectives and Components

The Government of Punjab is making strenuous efforts for a better and effective Health Care system. The Defining step in this direction was to recognize the importance of Health Care at Primary & Secondary Levels. As a first step towards better health care at primary and secondary level, the department under the guidance of Government of the Punjab has decided to launch massive revamping of 40 THQ & DHQ Hospitals in the financial year 2016-17 along with revamping of emergencies of 15 selected THQs and emergencies of all Hospitals. In addition to that, Government has assigned the task of revamping of all remaining 85 THQ Hospitals of Punjab during 2017-18. The Project Management Unit, Revamping Program, Primary and Secondary Healthcare Department has started the 2nd Phase of the said revamping program in September, 2017.

5.1 Background of Primary & Secondary Healthcare Department

Effective primary and secondary healthcare is particularly important in resource-poor countries. Effective delivery of vaccinations, maternal and child care (MCH) and treatment of common pathologies (such as malaria, gastroenteritis, respiratory tract infections and other vector borne diseases) is essential for the achievement of Sustainable Development Goals (SDGs). Effective diagnostic triage, an organized system of prescription and queue management, an effective and stringent sterilization regime, quality nursing and consultant care, implementation of minimum service delivery standards (MSDS) and delivery of care for chronic pathologies lie at the center for the provision of universal health care at a cost that the community can afford as envisaged in domains established by the 1978 Alma-Ata Declaration of WHO. Primary care serves as the cornerstone for building a strong healthcare system that ensures positive health outcomes and health equity. The deficiencies in quality of care represent neither the failure of professional compassion nor necessarily a lack of resources rather, they result from gaps in knowledge, inappropriate applications of available technology and unstructured planning. Local health care systems in our setup have practically not been able to implement department's objectives. Result is continuous lack of quality improvement to lower health outcomes.

Quality health care is actually provision of health care by timely, skillful application of medical technology in a culturally sensitive manner within the available resource constraints. Eliminating poor quality involves not only giving better care but also eliminating under provision of essential clinical services (system wide microscopy for diagnosing tuberculosis, for example); stopping overuse of some care (prenatal ultrasonography or unnecessary injections, for example); and ending misuse of unneeded services (such as unnecessary hysterectomies or antibiotics for viral infections). A sadly unique feature of quality is that poor quality can obviate all the implied benefits of good access and effective treatment. At its best, poor quality is wasteful and at its worst, it causes actual harm.

Keeping in view this basic essence of primary and secondary health care, The Government of Punjab is dedicated in making strenuous efforts for ensuring a better and effective Health Care system. The Defining step in this direction was to recognize the importance of Health Care at Primary & Secondary Levels. As a first step towards better health care at primary and secondary level, a separate department was created by bifurcating the Health department into two departments Specialized Health Care & Medical Education Department and Primary & Secondary Health Care (P&SH) Department. The principle reason for bifurcation has been to improve governance and service delivery in the spheres of health care across the province. Primary and Secondary Health Care Department has been entrusted the responsibility of primary and secondary level health facilities including preventive health services and Vertical Programs. P&SH Department accordingly has its functional responsibility in respect of 26 District Headquarter Hospitals (DHQs), 129 Tehsil Headquarter Hospitals (THQs), 322 Rural Health Centers (RHCs) and 2,504 Basic Health Units (BHUs). Moreover, specialized programs like Expanded Program for Immunization (EPI), TB Control (DOTS), Hepatitis Control Programs as well as special campaigns such as Dengue Campaign, Polio Eradication Campaigns also fall in purview of the department. The establishments like Director General Health Services (DGHS), Drug Testing Labs (DTLs) and Bio-medical Engineering Workshops also assist the department in discharge of its functions efficiently. Establishment of Internal delivery Unit at Primary and Secondary Health Care Department has been aimed for institutional strengthening and capacity building of Primary and Secondary Health Care Department. Monitoring and follow up remains one of key ingredients for good governance and is at heart of all management models. Therefore, an Internal Delivery Unit, comprising well qualified and experienced persons, is being established within P&SH Department. Internal Delivery Unit shall be manned with qualified and experienced consultants. Internal Delivery Unit shall be responsible for every such task needed to strengthen the PSHD which may range from operational matters to monitoring e.g. tracking pace of all initiatives of the Department through the process such as tracking procurement of medicines by districts, procurement of vaccine by Director EPI, pace of various development schemes and performance of Drug Testing & Bio-mechanical Labs etc.

The basic mandate of Primary & Secondary Health Department is to focus on preventive health care in primary sector along with basic diagnostics and treatment facilities at secondary level. The context is to primarily lessen the load on tertiary care health establishments and to reduce treatment costs. The major challenge for Primary & Secondary Health Department is to boost the confidence of masses and raise the level of trust in the primary health care system. The reality is that most of the health care establishments at secondary level are not currently providing health care services up to the optimal level, owing to a myriad of reasons including heavy patient load, scarcity of resources, human resource constraints and dysfunctional biomedical and allied equipment.

Due to lack of structured planning and monitoring, previous efforts did not materialize into an integrated health care regime, rather these have resulted in

haphazard construction, poor repair and maintenance, lack of basic amenities, absence of waiting areas, substandard diagnostics and therapeutics, shabby outlook and suboptimal level of patient care over all. Such state of affairs has severely jolted level of trust in health care system by common man and hence the patients prefer to visit tertiary level hospitals or even private health facilities for treatment of even very common pathologies. This subsequently has a cascade effect on socioeconomics of common man who has to spend more in shape of travelling from villages to district headquarters and then bearing costs of private treatment, secondly, this has also increased disease load on our tertiary health care establishments.

Keeping in view this importance of primary and secondary health care, the department decided to launch massive revamping program for all DHQs and THQs all over the Punjab.

5.2 Project Management Unit (PMU), Primary & Secondary Healthcare Department

In order to successfully complete the program objectives in the given timeframe, it is imperative to establish a dedicated Program Management Unit (PMU) having technical and administrative expertise and autonomy, as the regular machinery of the department is too busy with the routine work and cannot successfully steer the program. The PMU is responsible for the successful implementation of the Revamping Program through completion of all related projects. After the implementation of all these projects, the Primary & Secondary Healthcare network will be improved. The PMU shall ensure that the DHQ & THQ hospitals have a well-constructed physical infrastructure with vibrant management model for efficient service delivery and improved processes to focus on patient distress in prompt manner. It adheres to Minimum Service Delivery Standards (MSDS) to address the patients' needs in the most efficient and systematic manner.

In this regard, a dedicated team of Project Management Unit (PMU) has been established to execute the project. PMU's office is located at 31-E/1, Shahrah-e-Imam Hussain, Gulberg-III, near Qaddafi stadium, Lahore. It is headed by a Project Director with a committed team comprising of Deputy Project Director, Finance and Administration, ICT), Project Managers, Project Officers, Engineers, supporting administrative and technical staff, experienced and qualified Health consultants., Directors (Operations, Human Resource & Planning and infrastructure, Outsourcing) as well as Procurement Specialist.

5.3 Infrastructural Interventions

The construction of various new blocks of hospital complex is constructed without any proper planning and necessary connection to existing blocks. On the whole, the complete infrastructure of hospital is quite complex and scattered, access to various blocks of hospital is quite inadequate and there is no proper connection or link between different blocks of hospital. In the revamping program of

DHQ and THQ Hospitals, the placement of various facilities of hospitals are re-planned keeping in view the layout of existing blocks for facilitation of patients and some modifications/alterations were proposed in the blocks for necessary link or connection between the blocks.

Major infrastructural interventions can be divided in the following four categories

5.3.1 External Development

5.3.2 Internal Development

5.3.3 Medical Infrastructure Development

5.3.4 Emergencies Development

5.3.1 External Development

5.3.1.1 External Platforms

In order to improve the communication between blocks, necessary interventions are taken to improve the existing internal metaled road network. Moreover, new internal metaled road network is also designed and proposed to access the blocks of hospital accordingly. Despite the improvement in metaled road network, external platforms except metaled road is also designed and proposed for patients to access the blocks by simply walking among the blocks.

5.3.1.2 Façade Improvement

In order to improve the aesthetics of hospital, façade uplift with aluminum composite panels with aluminum cladding, false steel structures, façade aluminum windows and aluminum doors are designed in order to give the feel of modern architectural era.

5.3.1.3 Sewerage System

The most important entity of a hospital lies in its cleanliness. Infrastructural interventions to keep the hospital clean were taken in the form of improvement of sewerage system of the hospital. These interventions include the re designing of sewerage system, construction of new manholes, laying of new sewer lines and connection between trunk sewer and hospital sewer.

5.3.1.4 Landscaping (Horticulture)

Landscaping in hospital adds aesthetic & beauty to the built environment as well as improves in reducing the pollution. Soft & hard landscape reduces dust particles moment in air, hence contributes in a clean environment. The hours spent

in a hospital can be stressful for patients, staff and visitors. According to research easy access to a natural environment can contribute to stress management and potentially improve health outcomes: physiological studies indicate that 3-5 minutes spent in such Hospital Outdoor Landscape Design environments reduces anger, anxiety and pain and induces relaxation. Research also shows that “positive distractions” can reduce stress and their visual forms include gardens, scenic views and artwork, which play a critical role in modern hospital design: gardens, fountains, and water features provide patients, staff and visitors with restorative experiences of nature. In this regard complete lawns development, placement of benches, dust bins, playing equipment, fruit trees, flower plants, fruit trees and gazebos are proposed in all hospitals under revamping program

5.3.1.5 Water Filtration Plant

In the modern era, the access to clean water for everyone is becoming rare day by day. Especially in hospitals, the supply of water free from any harmful impurity is one of the most basic needs. To cope up with this problem water filtration system according to the existing nature of water is designed and water filtration plant is proposed accordingly. For ease of patients, drinking water supply network was designed to provide filtered water in wards and in various drinking stations within the hospital building

5.3.1.6 External Electrification

One of the major hindrances in functionality and ineffectiveness of electro medical equipment and other facilitating electrical appliances is either interrupted power supply or power supply with lesser voltage than required. This problem was solved by providing express line or dual electrical supply in all hospitals under revamping. Despite these two facilities based, on the current and proposed electrical load of hospital new transformers were proposed to step down the voltage to desired level and complete generator backup system was designed and generators along with automatic transfer switches were proposed accordingly. Moreover, to fully lighten up the hospital for proper utilization of all facilities of hospital during the low/no-light hours of the day, external pole lights to lighten up the pathways and garden lights to lighten up the lawns were designed and proposed.

5.3.1.7 Parking and Waiting area

Non-clinical facilitation of patients and attendants were specially considered in the revamping program. One such facilitation step is designing the parking and waiting areas on basis of daily influx of vehicles and patients/attendants during the

peak hours. Parking and waiting areas on several places of hospital were then proposed according to the design.

5.3.1.8 External Signage

External signage system is designed including various signage types for complete guidance of patient attendants and to search concerned facility promptly.

5.3.2 Internal development

5.3.2.1 Aesthetic improvement

In order to improve the aesthetics of hospital wards, corridors, rooms and toilet blocks, flooring and dado design of suitable material in these areas is proposed. Despite of aesthetics, the material of flooring and dado design were chosen to provide ease in cleaning process. For further improvement in aesthetics, paint on exterior and interior part of the hospital, poly-vinyl chloride paneling to conceal the dampness damaged areas and steel cladding of columns are proposed.

5.3.2.2 Ramp and Stretcher improvement

For hospitals having more than one floor, there is a huge problem of patient transfer with stretcher. This problem is solved by proposing new ramps/stretcher ways where needed. Moreover, in order to further improve the communication between various floors of hospitals improvement of stair cases with hand rail or guard rails is proposed.

5.3.2.3 Seamless flooring and Lead Lining

To keep high risk areas like Operation theaters, I.C.U, C.C.U, and Gynecology Operation Theater bacteria free is one of the basic medical practices. In the revamping program of hospitals low epoxy paint is proposed in these areas to provide seamless flooring so that the bacterial growth within the groves can be prevented. Moreover, to make the X-Ray rooms radio-resistant and to keep the patients away from the harm of rays, interventions are taken in X-ray rooms regarding provision of lead lining in walls, ceiling and floor.

Interventions were taken regarding hazardous radiation emitting areas to make them radio-resistant in order to keep patients/attendants away from harmful radiations. These interventions were in the form of provision of lead lining in ceiling, walls and roofs of X-Ray rooms.

5.3.2.4 Aluminum doors and windows

In order to make sound and heat proof the doors and windows of wards, corridors and major health facilities are proposed as aluminum doors and windows. Which despite of above benefits are also aesthetically pleasing. Corridor wire mesh windows and rolling blinds for windows are proposed in order to invite or stop the day light within the wards according to the requirement. Moreover, existing wooden doors having shabby and dirty look are proposed to be re-polished and washroom doors are proposed to be replaced with PVC doors to make them resistant against water.

5.3.2.5 Improvement of washroom blocks

The area of hospital which can be dirty at most is its washroom or toilet blocks. To improve the cleanliness of hospital the special interventions were taken regarding the renovation of toilet block of hospital. This renovation includes the re tiling of existing damaged flooring and skirting and addition of water closets etc.

5.3.2.6 Facilitation of attendants and patients

The facilitation of attendants is also one of the most basic things to be provided in the hospital. The facilitation of attendants contributes towards the facilitation of patients. In order to facilitate the attendants, pantries are designed at that location of hospital where attendants can be effectively facilitated. These pantries include stoves and washing machines. Moreover, it is also very important to educate the patients and attendants regarding the seasonal and general diseases along with its cure and prevention. Installation of LED televisions in various locations of hospitals especially in wards and waiting areas is also proposed in the design in this regard.

5.3.2.7 Furniture and Fixtures

One more step towards the facilitation of attendants or patients is placement of benches in waiting areas. The most rush positions of hospital are chosen in this regard and placement of benches is designed according to the patient number and flow. In order to improve the efficiency of consultants or doctors, interventions regarding the renovations of doctor or consultant office are designed in this regard. The doctor room furniture is designed for this purpose keeping in view the existing area of room and necessary required equipment. To carry and dispose of the medical and general waste material of hospital, waste bin sets are designed to place at various positions of the hospital. These positions are marked by keeping in view the general circulation of the public and sensitivity of the area.

5.3.2.8 Air Conditioners, Refrigerators and LEDs

According to the different standards, there is a separate requirement of temperature to control the environment of particular place with respect to the nature of facility. In this regard, air conditioners are proposed according to the required tonnage of the specific area. For better efficiency and performance delivery, cabinet air conditioners are proposed in the wards and other facilities having larger areas. The maintenance and repair services of these air conditioners are outsourced so that uninterrupted performance can be delivered. For further facilitation of patients and attendants, placement of refrigerator is proposed on each nursing counter. These refrigerators are proposed for items requiring specific temperature for storage purposes. LEDs will also be placed at various points to facilitate the patients and attendants.

5.3.2.9 Internal Signage and Paintings

As described earlier, the information regarding the positions of major health facility especially emergency and labor room etc. is very much essential for any person entering inside the covered area of hospital. For these purposes, different types of signage are proposed including corridor hanging signage, floor map boards, room numbers and room names plaques. For general information duty rooster boards, janitorial station signage, waste bin set signage, emergency exit signage.

Different kinds of paintings are designed according to the nature of area where it is desired to be fixed. These paintings are beneficial in a sense that it improves the aesthetics of hospital and moreover, such painting patterns are designed so that it give the relaxation and soothing feelings to aid in the healing of patients. Moreover, in order to create a healthy, positive, entertaining and friendly environment for interest of children, paintings on children wards is proposed.

5.3.3 Medical Infrastructure Development

To cope with the emergency condition of clinically serious patient, oxygen supply system is designed by proposing an individual oxygen supply system for each major health facility. This oxygen supply network comprises on copper pipe line, flow meter with bed head units, cylinders and setup and individual central oxygen supply system. The contract of filling of oxygen gas in cylinders is outsourced for uninterrupted oxygen gas supply to the patients.

For patient receiving, information, guidance, appointment or for any other task, separate reception counters are proposed in various blocks so that, all necessary information regarding the block is available on the counter round the clock. In this way, utilization of clinical facilities will be optimized. For indoor patient department, complete facilitation and care of patients admitted in wards is ensured

by proposal of nursing counter in each ward. This nursing counter will be placed or constructed in such a placement that each bed can be monitored by the nurse available.

The design regarding architectural planning of above mentioned facilities are designed according to the patient facilities and architectural planning standards. These designed facilities are then designed in the existing building structure according to the patient flow and sensitivity of facility.

5.3.3.1 Emergency Department:

All THQS and DHQs are already providing emergency services to critical ill patients. As far as the existing sources including human resources & equipment are not sufficient to fulfill the requirement. Primary and secondary healthcare department is going to take the initiative to improve emergencies of hospitals by providing new equipment and human resource in form of recruitment of doctors, nurses and paramedical staff along with Infrastructure of Causality Department. Ultimate goal of revamping of emergencies is to enhance the quality of medical services to critical ill patient in golden hour to decrease the mortality and morbidity rate in causality department of each hospital.

5.3.3.1.1 General Overview of Emergency Department

In any hospital, the most important and critical area is its emergency block. Specially, if hospital is situated on a highway where there is a huge flux of rapidly moving traffic which can be a major source of causalities, if patient treatment is not proper. Besides road trauma cases, cardiac cases and burn cases etc. are also more likely to be initially treated in emergency. Proper first aid to patient reduces morbidity and mortality. The emergency department of hospital is a block where in time service delivery is so much essential that delay in proper treatment can cause lot of lives to suffer from serious diseases for rest of their life. In a nutshell, the efficiency and in time service delivery of emergency block depicts the overall efficiency of the hospital.

In order to improve the emergency department and to ensure in time service delivery of the same, special initiatives are being taken in this regard. Infrastructure of emergency department depends a lot on its service delivery and efficiency. An emergency department with all necessary medical and general equipment and equipped with all essential medical facilities but without ineffective and poorly planned infrastructure will never fulfill its need. Conclusively, such infrastructural interventions are planned in this program so that the efficiency of emergency department can be optimized. Some of the following major interventions are listed below:

5.3.3.1.2 Position of Emergency Department

It is planned that new construction of building should be avoided at most because already existing blocks with no proper utilization are existing in all of the hospitals. The emergency block should be on such a location that the distance between that department and main entrance gate should be minimum with respect to other locations or positions of complex. To fulfill this purpose, that portion of this building block is selected for re planning of emergency department which is most near to the entrance gate. The far positioning of emergency department will result the lost in time for patient during its travelling which can be crucial.

5.3.3.1.3 Access towards the Emergency Department

The route leading towards the emergency department is important in this aspect that a smooth track and a widened path will be feasible for the movement of vehicle or stretcher. Initiatives are taken in this program for construction of new pathways or renovation of existing ones leading towards the emergency department. Such material of the external platform is selected so that a smooth movement should be observed over it rather than jerks bumps. Moreover, the width of the passage from entrance gate up to emergency department is designed by keeping in view the flux of the vehicles rushing towards the emergency block.

5.3.3.1.4 Medical Infrastructure Emergency:

The existing emergency department or other block of the hospital according to its access from entrance gate, is designed and re planned according to the above described emergency facilities. The changings or amendments in the existing covered area of the hospital are proposed according space availability. Due to the rush of patients and increased number of minor surgeries performed in the emergency department make it one of the dirtiest department of the hospital. Hence, in this regards it is very much essential to keep the floors of certain area of emergency department bacteria free. Seamless flooring is proposed in this regard to avoid the groves so that the cleaning process can be made easy. Low epoxy paint is designed and proposed in this regard on Minor OT, Gurney area and specialized healthcare unit.

Provision of medical gasses is essential to facilitate the patients suffering from breathing issue due to some disease and ailment. The filling process of oxygen in the cylinders is outsourced to ensure the continuous supply of the oxygen among the beds. The oxygen system comprises on copper pipe, central oxygen supply system for pressure maintenance, oxygen cylinders and flow meter with bed head units.

5.3.3.1.5 General Building Interventions:

In order to improve the over building condition of emergency blocks following major interventions are taken:

1. Provision of flooring and skirting
2. Painting on interior and exterior side of department

3. Provision of false ceiling
4. Replacement of damaged and renovation of existing wooden doors
5. Provision of aluminum doors and windows
6. Public health work regarding supply of water and gas along with improvement of sewerage system
7. Provision of LED panel lights, ceiling fans, exhaust and wall bracket fans
8. Improvement of existing wiring and distribution including replacement of damaged equipment and proposal of new equipment

5.3.3.2 Monitoring and Quality Assurance (Process Interventions)

During construction phase, “Construction Supervision” will be carried out by the Procuring Agency (Director Infrastructure) along with Punjab Buildings department (C&W D) who will certify construction activity.

5.3.3.2.1 MSDS (Minimum Service Delivery Standards)

MSDS are minimum level of services, which the patients and service users have a right to expect. MSDS include minimum package of services, standards of care (level specific) and mandatory requirements/systems for delivery of effective health care services. The World Health Assembly in Alma-Atta in 1978 expressed the need of action to protect and promote the health for all the people of the world. Essential health is to be made universally accessible to individuals and families through their full participation and at a cost that the community and country can afford. MSDS is now being deemed to be of vital importance at Secondary HealthCare level. The THQ hospital provides promotive, preventive, curative, diagnostics, in patients, referral services and also specialist care.

THQ hospitals are supposed to provide basic and comprehensive EmONC. THQ hospital provides referral care to the patients including those referred by the Rural Health Centers, Basic Health Units, Lady Health Workers and other primary care facilities. The District Head Quarters Hospital is located at District headquarters level and serves a population of 1 to 3 million, depending upon the category of the hospital. The THQ hospital provides promotive, preventive, curative, advance diagnostics, inpatient services, advance specialist and referral services. Services package and standards of care at SHC level are also not well defined. Deficient areas include: weak arrangements to deal with non-communicable diseases, mental, geriatric problems and specialized surgical care especially at THQ. There is disproportionate emphasis on maternal and child health services at SHC facilities. Services-package being provided at PHC and SHC are also deficient in terms of Health care providers’ obligations, patients’ rights and obligations.

MSDS umbrella is very vast and it requires a very extensive and planned approach towards, gap analysis, planning, development, implementation,

monitoring and evaluation. MSDS comprises of 10 thematic area, 30 standards and 162 indicators. Government of Punjab has taken an initiative to standardize all hospitals of Punjab in accordance with Punjab Health Care Commission Minimum service delivery standards. PMU team segregated MSDS indicators into various targets and sub-targets to make these targets achievable. Manuals for both clinical and non-clinical specialties are being prepared comprising of departmental organizational plan, criteria for essential human resource, essential equipment, general and specialized SOPs, departmental safety guidelines etc. Standardized Medical Protocols (SMPs) are standard steps to be taken by a health facility during medical or surgical management of a patient. Standard Operating Procedure (SOPs) are detailed description of steps required in performing a task including specifications that must be complied with and are vital to ensure the delivery of these services .It requires literature review, departmental view, facility visits, consultative visits and development of action plan for implementation of MSDS. Effective MSDS implementation requires essential documentation. Documentation is a key for record keeping, monitoring and auditing. For this purpose, registers, forms, displays have to be designed with coding for effective tracking. In addition to this it also requires analysis from field from utilization point of view.

Displays constituting of public serving messages, health related information and general facility related guidelines. In order to monitor effective implementation, compliance monitoring is required to be carried out by field experts which is followed up by further planning to ensure continuous delivery of effective, accessible, continuous and quality services to masses in uninterrupted manner.

MSDS implementation is a complex procedure. Because it requires

1. Capacity building for understanding, development and continuous implementation of MSDS.
2. Ecosystem for establishing its implementation by full cooperation, collaboration, commitment of
3. Continuous monitoring
4. Continuous audit
5. Continuous training, refresher courses with purpose of reinforcement
6. Continuous quality improvement
7. Continuous Strengths, Weaknesses, Opportunities, and Threats (SWOT) analysis and gap identification
8. Continuous strategy making and implementation with backup plan for secondary options.
9. Responsibility designation for clinical and non-clinical procedures and activities.
10. Effective utilization, calibration and maintenance of equipment with record maintenance and their audit
11. Establishment of plans, implementation, analysis of gaps with alternate planning regarding fire evacuation plan, hospital inflectional control plan, hospital operational and

strategic plans, disaster plan both internal (partial / complete) and external .

The PDSA cycle

1. Developing a plan to test the change (Plan),
2. Carrying out the test (Do),
3. Observing and learning from the consequences (Study), and
4. Determining what modifications should be made to the test (Act).
5. Monitoring effective load sharing of Human resource and equipment within hospitals.
6. Addition of new HR/ rationalization on requirement of MSDS indicator compliance for effective departmental organization and their planned trainings by MPDD, UHS ETC
7. Standard optimization of Standard operating procedures and methods for their effective adoption by hospital human resource.
8. We have also extended our MSDS implementation in 20 more departments such as dentistry, ICU, CCU, Dialysis, mortuary, burn unit, physiotherapy, orthopedics, medicine, nursing, paedes, ophthalmology, derma, TB, urology, patient transfer system, store and purchase, audit and accounts, procurement, planning etc. We are also in process of preparing manuals, SOPS, plans, universal forms, and universal registers with universal tracking system of record.
9. We have developed an application for continuous monitoring of MSDS compliance.

Health managers are considered essential at both the strategic and operational levels of health systems. To gain an initial understanding of the management workforce for service deliver. Every health system desires managers who are competent and have the knowledge, skills and demeanor to be effective. The performance of health services managers will depend in part on how certain standard support systems function. Even good managers will have problems if procedures for running finances, staff, etc., are not working well. Functional systems should have clear rules and regulations, good guides and forms, effective monitoring and supervision and appropriate support staff, e.g. account staff, supplies and information staff and secretarial support A health manager is supposed to be competent in planning, budgeting, financial management systems , personnel management systems, including performance management , procurement and distribution systems for drugs and other commodities , information management and monitoring systems , systems for managing assets and other logistics, infrastructure and transport. Support systems help to ensure uniformity in management practices and ensure that management and administrative systems function and get results.

5.3.3.3 Laboratory

To improve the quality of medical care of patients, primary and secondary Healthcare Department has decided to improve the Laboratory in THQ hospitals. Majority of patients are suffering problems some time life threatening phases due to delay in diagnosis and treatment according to diagnosis in case of lack of laboratory in vicinity.

5.3.3.4 X-Ray

To improve the quality of medical care of patients, primary and secondary Healthcare Department has decided to improve the Radiology unit in THQ hospitals. Majority of patients are suffering problems some time life threatening phases due to delay in diagnosis and treatment according to diagnosis in case of lack of Radiology unit in vicinity. A healthy human being enables not only nutrition of the physical body but also enhances social interaction and promotes self-esteem and feelings of self-esteem and feelings of wellbeing. The radiology equipment serves as a “window “to the patient treatment regarding the body.

5.3.3.5 CCU

Understanding these ground realities Primary and Secondary Healthcare Department, Government of the Punjab has decided to establish coronary care units (CCU) in THQ hospitals as a part of its Revamping Program. This will improve the quality of healthcare and timely provision of life saving treatment will be possible to large number of patients. A coronary care unit (CCU) is a special department of a hospital or health care facility that provide coronary care to patients. Coronary care units cater to patients with severe and life-threatening cardiac illnesses and which require constant, close monitoring and support from specialized equipment and medications in order to ensure normal bodily functions.

Coronary care units are staffed by highly trained doctors and nurses who specialize in caring for cardiac patients. They are also distinguished from normal hospital wards by a higher staff-to-patient ratio and access to advanced medical resources and equipment that are not routinely available elsewhere. Common conditions that are treated within CCUs including angina, myocardial infection, cardiac arrhythmia, cardiac shock etc. Patients may be transferred directly to coronary care unit from an emergency department or from a ward if they rapidly deteriorate, and immediately require cardiac care treatment.

5.3.3.6 Dialysis Unit

Chronic kidney disease is now a significant public health problem worldwide. Chronic kidney disease globally affects almost 10 % of general population with Incidence in prevalence of disease are still rising especially in

developing countries .The rise in chronic kidney disease is by aging of the populations and growing problems of obesity, diabetes, high blood pressure and cardiovascular diseases.

Tehsil head Quarter Hospital (THQ) serve large catchment populations of the district and provide a range of specialist care in addition to basic outpatient and inpatient services. Patient who are in need of dialysis, are referred to tertiary care hospital due to non-availability or insufficient number of dialysis machines. Patient's condition not only deteriorate but also compromise the effectiveness of life saving intervention due to approaching to other cites or to costly private setups of dialysis. Primary and Secondary Healthcare Department has decided to establish & strengthening already existing 5 bedded dialysis unit at THQ hospitals. This will improve the quality of healthcare and timely provision of life saving treatment will be possible to large number of patients.

Dialysis unit is a special department of a hospital or health care facility that provides a lifesaving support to patients with chronic renal disease along with pre-existing diseases like diabetes, hypertension, ischemic heart disease to ensure normal bodily functions. Dialysis units are staffed by highly trained doctors, dialysis technicians and dialysis nurses who have done specialized training in caring for such patients. Patients are usually admitted from out door and often from emergency and registered for their timing and schedule of dialysis because these patients are given regular appointments twice or thrice a week as per defined by nephrologist/physician.

5.3.3.7 Labor Rooms/Nurseries

To improve the quality of medical care of patients, primary and secondary Healthcare Department has decided to improve the Labor Rooms/Nursery unit in THQ hospitals.

5.3.3.8 Operation Theater

To improve the quality of medical care of patients, primary and secondary Healthcare Department has decided to improve the Operation Theater in THQ hospitals. Majority of patients are suffering problems some time life threatening phases due to delay in treatment according to diagnosis in case of lack of Operation Theater in vicinity.

5.3.3.9 Orthopedic unit

To improve the quality of medical care of patients, primary and secondary Healthcare Department has decided to improve the orthopedic unit in THQ

hospitals. Majority of patients are suffering problems some time life threatening phases due to delay in diagnosis and treatment according to diagnosis in case of lack of orthopedic unit in vicinity.

5.3.3.10 Gynecology Department

To improve the quality of medical care of patients, primary and secondary Healthcare Department has decided to improve the gynecology unit in THQ hospitals. Majority of patients are suffering problems some time life threatening phases due to delay in diagnosis and treatment according to diagnosis in case of lack of gynecology unit in vicinity.

5.3.3.11 Surgical Unit

To improve the quality of medical care of patients, primary and secondary Healthcare Department has decided to improve the surgical unit in THQ hospitals. Majority of patients are suffering problems some time life threatening phases due to delay in diagnosis and treatment according to diagnosis in case of lack of surgical unit in vicinity.

5.3.3.12 Intensive Care Unit (ICU)

Tehsil Headquarter Hospitals (THQ) serve catchment populations of the whole Tehsil (0.5-1 million) and provide a range of specialist care in addition to basic outpatient and inpatient services. They typically have about 80 to 150 beds and a broad range of specialized services including surgery, medicine, paediatrics, obstetrics, gynaecology, ENT, ophthalmology, orthopaedics, urology, neurosurgery etc. Patient who are in need of intensive care are usually referred to tertiary care hospital but due to long distance they had to travel and time consumed on road due to heavy traffic and other unavoidable circumstance ,patient's condition not only deteriorate but also compromise the effectiveness of life saving intervention. Understanding these ground realities Primary and Secondary Healthcare Department, Government of the Punjab has decided to establish intensive care units (ICU) in THQ hospitals as a part of its Annual Development Plan. This will improve the quality of healthcare and timely provision of life saving treatment will be possible to large number of patients.

Primary and Secondary Healthcare Revamping programme (PSHRP) is the initiative by the Chief Minister of Punjab to strengthen the healthcare delivery system in the province Acquisition of licenses for all THQ Hospital by developing and implementing uniform set of standard Operating procedures (SOPs) & standard medical protocol (SMP) for compliance to MSDS of PHC is planned as a part of PSHRP.

An **intensive care unit (ICU)** is a special department of a hospital or health care facility that provides intensive treatment medicine. Intensive care units cater to patients with severe and life-threatening illnesses and injuries, which require constant, close monitoring and support from specialized equipment and medications in order to ensure normal bodily functions. Intensive care units are staffed by highly trained doctors and nurses who specialize in caring for critically ill patients. They are also distinguished from normal hospital wards by a higher staff-to-patient ratio and access to advanced medical resources and equipment that are not routinely available elsewhere. Common conditions that are treated within ICUs include ARDS, trauma, multiple organ failure and sepsis. Patients may be transferred directly to an intensive care unit from an emergency department if required, or from a ward if they rapidly deteriorate, or immediately after surgery if the surgery is very invasive and the patient is at high risk of complications.

5.3.3.13 Mortuary Unit

To improve the quality of medical care of patients, primary and secondary Healthcare Department has decided to improve the mortuary unit in THQ hospitals. Postmortem or autopsy is a part of medico legal investigation into a death which is conducted by a judicial medical officer. Realizing the problems countered medico legal process focusing on following important areas;

1. Improving quality and motivation levels of human resource conducting medico legal Examination.
2. Improve methods to collect and preserve samples so that so that these may best be available for further forensic analysis.
3. Improving physical infrastructure at tehsil level to provide enabling environment for better conduct of medico legal cases including improvement in state of mortuaries at tehsil level.
4. Improvement in legal framework including improved forms.

5.3.3.14 Dental Unit

To improve the quality of medical care of patients, primary and secondary Healthcare Department has decided to improve the dental unit in THQ hospitals. Majority of patients are suffering problems some time life threatening phases due to delay in diagnosis and treatment according to diagnosis in case of lack of dental unit in vicinity.

5.3.3.15 Physiotherapy Unit (33 THQ Hospitals)

To improve the quality of medical care of patients, primary and secondary Healthcare Department has decided to improve the physiotherapy unit in all THQ hospitals. Majority of patients are suffering problems some time life threatening

phases due to delay in diagnosis and treatment according to diagnosis in case of lack of physiotherapy unit in vicinity.

1. Physiotherapy is a “science of healing and art of caring”. It pertains to the clinical examination, evaluation, assessment, diagnosis and treatment of musculoskeletal, Neurological, Cardio-Vascular and Respiratory systems ‘functional disorders including symptoms of pain, edema, and physiological, structural and psychosomatic ailments. It deals with methods of treatment based on movement, manual therapy, physical agents, and therapeutics modalities to relieve the pain and other complications. Hence, Physical therapy covers basic parameters of healing sciences i.e. preventive, promotive, diagnostic, rehabilitative, and curative.
2. Physiotherapy practice has a very long history and a modern clinical practice is heavily reliant on research and evidence based practice. The Primary and Secondary Healthcare Department Government of Punjab attests to this commitment by adopting and promoting the Standards of Practice for Physiotherapy.

Importance of Physiotherapy and Rehabilitation department

1. Physiotherapy provides services to individuals and populations to develop maintain and restore maximum movement and functional ability throughout the lifespan. This includes providing services in circumstances where movement and function are threatened by aging, injury, disease or environmental factors. Functional movement is central to what it means to be healthy.
2. Physiotherapy is concerned with identifying and maximizing quality of life and movement potential within the spheres of promotion, prevention, treatment/intervention, habilitation and rehabilitation. This encompasses physical, psychological, emotional, and social wellbeing. Physiotherapy involves the interaction between physical therapist, patients/clients, other health professionals, families, care givers, and communities in a process where movement potential is assessed and goals are agreed upon, using knowledge and skills unique to physical therapists.
3. The proposed project entails setting up a Physiotherapy and Rehabilitation Department. Being one of the major players in human service sector, rehabilitation Departments provide a wide range of services relating to physical impairments and disabilities of all age groups. These services range from assessment, evaluation, diagnosis, treatment and plan of care of individuals, from newborns to the very oldest, who have medical problems or other health-related conditions that limit their abilities to move and perform functional activities in their daily lives. These services will be provided by qualified Physiotherapists Consultants. Our consultants

examine each individual and develop a plan using treatment techniques to promote the ability to move, reduce pain, restore function, and prevent disability. In addition, our doctor work with individuals to prevent the loss of mobility before it occurs by developing fitness- and wellness-oriented programs for healthier and more active lifestyles. The proposed Physiotherapy and Rehabilitation Department will provide all these services under one roof.

Opportunity Rationale

Due to vast media exposure over past few years, women, as well as men, have become more conscious about their health especially youngsters. In Pakistan, Rehabilitation Clinics and Fitness Centers have grown over the years. It is easy to open GP clinic as space and skill requirement is very basic. But a Rehabilitation clinic provides more professional services with qualified staff including Physiotherapy doctors and experienced support staff and therefore, requires more planning and arrangement. Quite a few Physiotherapy and Rehabilitation Departments have opened in Lahore, Islamabad, Karachi and other relatively larger cities of Pakistan, which are catering to the demand of the people, but still there is a lot of unfulfilled demand as can be judged from excessive rush at the existing Physiotherapy Departments. The patient's ratio and problems with musculoskeletal disorders and neurological disorders are same in the tehsils and districts levels of Punjab. The business is service-oriented and carries large potential for serving poor people due to its unique nature and uncontrolled spreading of joints and muscles, and neurological problems, especially in the areas where our THQ Hospitals are located. There is lot of potential in this domain, especially for those who are committed to providing quality service.

5.3.3.16 Queue Management System (QMS)

OPD in THQ has enormous patient load, due to the only big public sector serving hospital in Tehsils. At the moment the ticket system is prevailing but there is no mechanism to handle that ticket and assign number to the ticket and its being issued in manual format. This will also create dependency on the person issuing the ticket. After getting the tickets, patient will be provided with no guidance on where to go and when his term will come to meet the doctor and get the required service. This will create confusion and delayed service delivery. On the other hand it will waste lots of time on the end of doctor and patient as patient and doctor has no direct liaison with each other. Moreover, patient will again have to be dependent on some person to check that either doctor is free or any patient sitting in his facility. Here again, human intervention and dependency will come into play.

This project basically aims to remove all the human related dependency till the patient reach the doctors. Moreover, it also includes, recording basic information

for a patient and guiding him to the doctors room from registration count to triage without any dependency on hospital staff. This will improve the transparency as per the vision of good governance and serve the patient in an efficient and transparent manner. This will also help the patient in estimating that time estimate till his term which will give him relief and more belief on the fair system. On the other hand doctor will always have an idea that how many patients will be in queue and give him direct liaison with the patient sitting outside.

The need of queue management system is evident in hospital from the fact of lack of proper mechanism of patient queue management at OPD's, human resource deficiency and non-functional equipment. The Implementation of Queue Management System will provide and streamline Patient Queue Management at OPD with Ticket Generation and Display of Numbers on the counters. This will help in maintaining the queue on First IN First OUT (FIFO) basis. The system will also provide the information counter to the general public to educate them in the use of queue management system and short description of the process. After implementation of this system, the incoming patient will be guided in a manner to get the service on his turn without any dependency or interference of an external resource. All will be handled in an automated way with patient are being served at their turn.

The system manages the patients load, organizes the patient's queues in an adequate manner and gives them the ease in waiting area; and they will be examined gracefully by doctors at their turn. Basic information of the patient is also linked with its ticket, being taken at the first counter. This will help established a unique ID against each patient. This will also lead to the establishment of Electronic Medical Record. The Process flow of Queue Management System at THQ is given as follows:

There are 25 counters at THQ level including basic registration counter, triage counter, consultant office and hospital pharmacy. There is one ticketing machine with a bifurcation of male, female and old age person. The ticket will be issued to the relevant category accordingly. After receiving the ticket the said number will be blinked on male, female and old age counter. The person will move to that counter where he will be asked about his basic details which will be entered in the basic registration form software linked with QMS and that specific token / ticket number. He will also be asked about the disease and accordingly the relevant consultant / specialty area e.g. pediatrics, ophthalmology etc. after registering, he will take the printout and give the slip to patient / attendant along with its token number.

The basic fee of OPD will be received at the registration counter and accounted for in the basic registration software linked with QMS. The same token number will be displayed on the triage counter where his vitals will be taken and written on the same registration slip available with the patient. Now, keeping in view the specialty area the token number will be displayed on the relevant consultant office and he will be checked by relevant consultant. The consultant than diagnosed the medicine or either to admit it after his examination. In case of medicine he will be sent to hospital pharmacy where again the same ticket number will be displayed. There have to be an option available with the doctor to either redirect him to the hospital pharmacy or other (medical tests, referred to IPD). On displaying the same token number at pharmacy counter the patient will move to pharmacy counter along with his token number and registration slip and take prescribed medicine. Patient will be disposed from that window and process of QMS will be completed. There will be no entry in the basic registration software on the counters of triage, doctor at the moment. Detail of equipment is attached.

The process described above for THQ will be implemented. The important constraints for the systems are:

1. Same token number will be used at all the counters and patient will be getting the ticket from ticketing machine only once at the time of entry.
2. QMS will cater for missed, skipped or delayed patient at any counter.
3. There will be two LED displayed at different location in the waiting area to guide patients about the process details and to display token number along with announcement in URDU.
4. The gap between each display panel from ticketing machine to pharmacy can be customized according to requirement e.g. 5, 10, 30, 60 seconds etc.

5.3.3.17 Electronic Medical Record (EMR)

Establishment of network infrastructure, establishing a central data center, connectivity of different building through fiber, are also the major components of the revamping project in terms of ICT. This will including provision of networking point at all nursing stations and important areas where entries regarding patients' needs to be made e.g. Radiology/Pathology, Indoor, outdoor etc. This will serve as backbone to implement the Electronic Medical Record System in the Hospital which has the key feature of generating Unique Medical Record Number for each patient.

This MR number will serve as an identity for patients during their treatment, retrieval of records and for decision making.

EMR will also be able to log the patient for treatment being provided to him in different areas of hospital i.e. OPD, Pathology, Radiology, Surgery, Indoor, etc. and their integration. This will be achieved by entering the relevant information at each department against specific MR number of a patient in the Customized / Purpose build software (EMR) for these public healthcare facilities.

This entry of MR number against each patient in hospital will build a large database for patient and relevant diseases. This will help in analysis disease / epidemic prevention and better patient care through retrieval of patient history and proper diagnoses at physician end. Implementation of patient registration, Record keeping, physical queue management, E-prescription, supporting IT interventions for EMR and medicine dispensation. Detail of equipment is attached.

5.3.3.18 Video Surveillance through CCTVs

Installation of network based CCTV cameras is an important module in the ICT part of revamping project. Scope of this component is to install 60 to 80 cameras in each hospitals at important location i.e. entry, exit, OPD, waiting areas, Parking for surveillance and security purposes. This will also serve as major input to the security services by Outsourced Security Company in the hospitals. Moreover, there will be small scale central control room at each hospital to monitor the allocated locations where the cameras have been installed. This system will also have the facility to record the video for 15 days for all the cameras so that recording of specific duration can be produced on demand. This will also have the facility of central control room which has the capacity to access the camera of THQ hospitals and to view and monitor the area of specific camera within specific hospital at any given time. Therefore, it will establish a centralized surveillance and security mechanism for these 85 public sector healthcare facilities. Detail of equipment is attached.

5.3.3.19 Medicine Store

To improve the quality of medical care of patients, primary and secondary Healthcare Department has decided to improve the medicine store in THQ hospitals.

5.3.3.20 Day Care Center

On-site (or near-site) child care would lead to improve workplace satisfaction by allowing employers more frequent contact with their children,

reducing stress and anxiety over scheduling, and potentially providing financial benefit to the hospital. Therefore, P&SH Department has decided to establish the Day Care Center at every THQ Hospital. The Medical Superintendent of the concerned hospital will be the overall in-charge of the Day Care Center.

5.4 Out Sourcing of Non Clinical Services

It was planned to provide Outsourcing of following Non-clinical services through development Budget later on decided to shift to non-development Budget as per the decision of progress review meeting chaired by the Chairman P&D Board dated 01-01-2018 w.e.f. 30-06-2018:-

1. Janitorial services
2. Laundry services (On hold)
3. MEPG Services
4. CT scan
5. Security

5.4.1 Janitorial services

These services include cleaning of hospitals and its roads and ROW areas. Internal cleaning comprises of complete cleaning along with washrooms cleanliness and material for these services such as hand wash/sanitizer. The Outsourcing is hereby designed keeping in view the sizes of areas assigned to each sanitary worker along with condition and nature of service. Human resources are planned after measuring the total area of hospital, built up area excluding the areas of horticultural land and residential buildings. The workers shall work in three shifts in a day. Half of the total strength of sanitary workers shall work in morning shift due to patients load in OPD. The concerned sanitary work company is bound to provide cleaning services materials and their refilling as and when required.

The companies providing janitorial services will be required to provide quality janitorial services, complete their personnel strength on daily basis which will be ensured through biometric attendance. Also, the companies will be subject to pecuniary penalties by hospital authorities if services provided are not according to the contracts.

5.4.2 Laundry Services

Different models were being applied by the hospital administrations individually which were not properly catering the basic requirement of washing and disinfection of different items used for hospitals. This model includes the initial procurement of different daily use items such as three different colors bed sheets and pillow covers and are to be changed thrice a day. Moreover, the concerned company must provide washing and cleaning services of bed sheets, pillow covers, blankets along with covers, apparels/OT clothes.

5.4.3 MEPG Services

The service of the hospitals is suffering badly due to improper functionality of the existing electrical and mechanical equipment which arises due to lack of maintenance. This model satisfies the need of proper maintenance plan which comprises of regular visits of technicians for looking after of electrical and mechanical equipment and accessories. Outsourcing company will be responsible for immediate response and above mentioned services.

5.4.4 CT Scan Services

CT Scan Services in selected Hospitals of Punjab are also being undertaken as a component of Government's decision to revamp all Secondary Healthcare. The objective of this initiative is to provide high quality CT Scan Services to widely scattered population of low socio-economic groups at their door steps. It will ensure provision of satisfactory diagnose infections, muscle disorders, and bone fractures. The imaging technique of CT Scan can help doctor to study the blood vessels and other internal structures and assess the extent of internal injuries and internal bleeding.

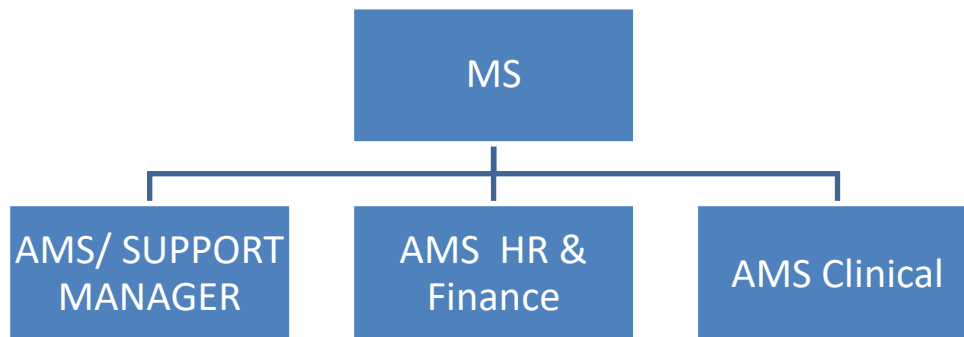
5.4.5 Security

The outsourcing model is designed due to non-provision of security arrangements and improper parking in different areas of premises of hospital. This model consists of guards who shall work in two shifts to provide security and surveillance for complete premises of hospital excluding residential areas. The devices required for this service to operate are arms, walkie talkie, Base set per unit and torch etc.

5.6 HR & Management Interventions Structure

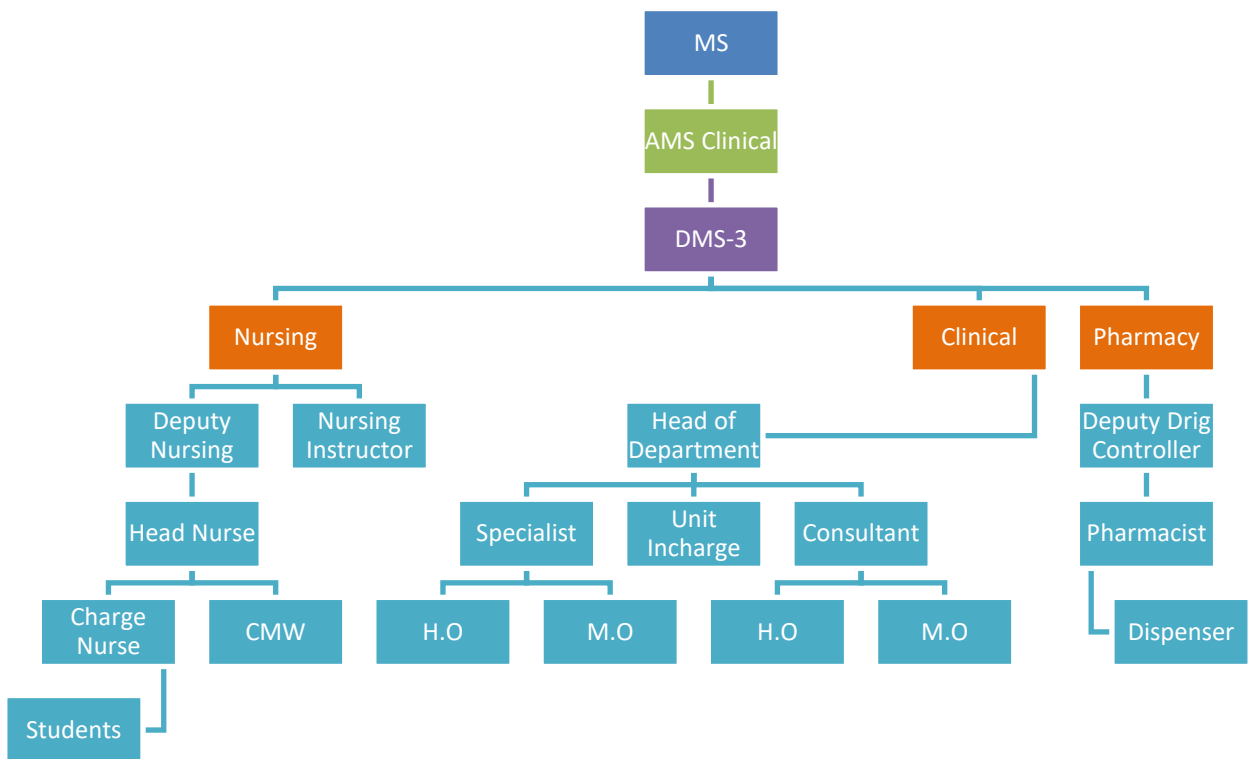
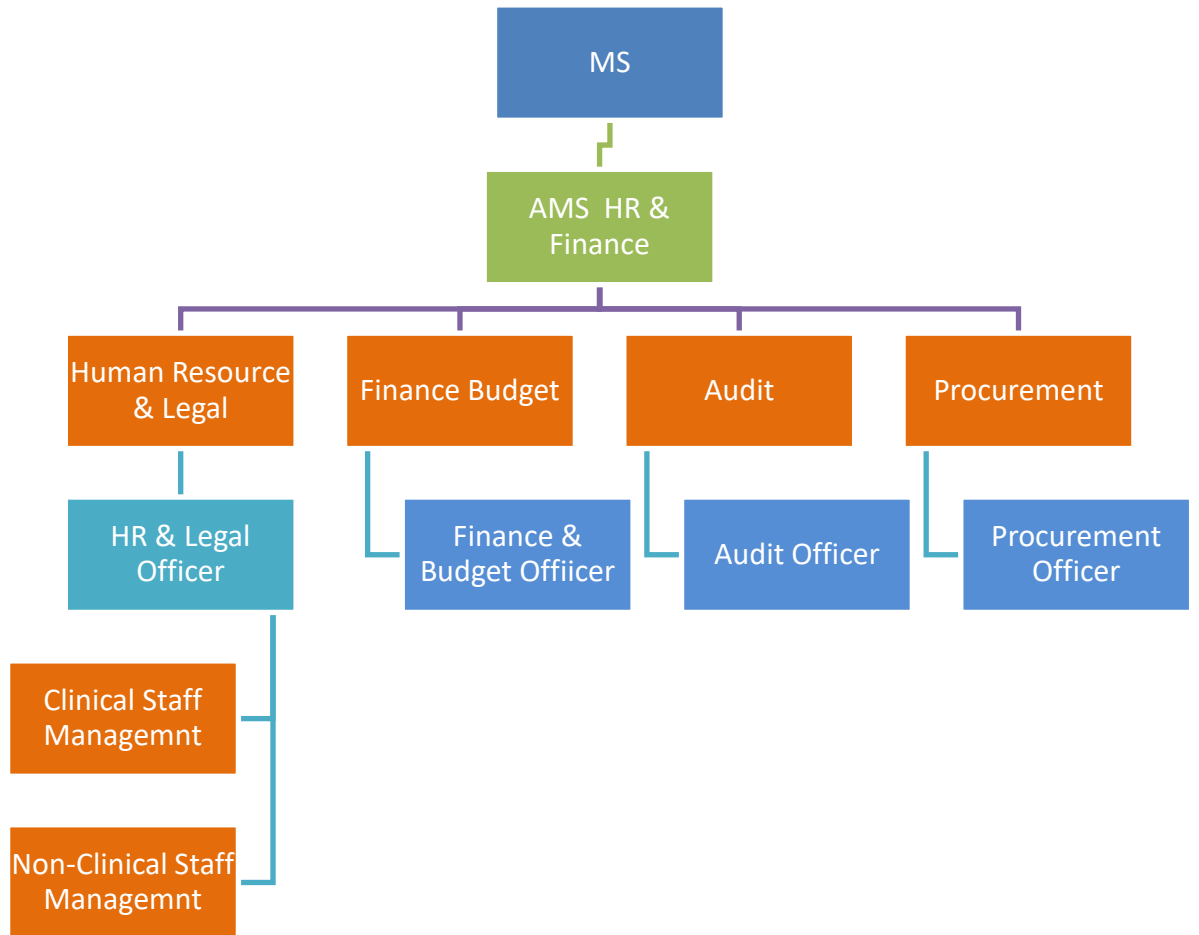
HR Interventions can be broadly classified into introduction of New Management Structure (NMS) staff.

New Organogram of Hospital



MS

- AMS/ SUPPORT MANAGER
 - IT/Data Analysis
 - IT/ Statistical Officer
 - 4 Data Entry Operators
- Admin
 - Admin Officer
 - 4 Monitors
 - Security
 - Transport
 - Parking
 - Janitorial
 - Canteen
 - External House Keeping
 - Civil Works
 - Technical works
 - Electrical Works
 - Internal House Keeping
 - Laundry
 - Stores & Supplies



5.6.1 Non Clinical HR Interventions (Human Resource (HR) Plan Management Structure)

Institution will run under the administrative control of Medical Superintendent, who will control this with the collaboration and cooperation of 3 Additional Medical Superintendents including AMS (Admin), AMS (HR & Budget) and AMS (clinical), 3 Deputy Medical Superintendents (morning, evening and night) will be reporting to AMS Clinical. Each clinical facility will be further controlled by head of concerned department and 6 administrative posts of HR & Legal Officer, IT/Static Officer, Budget & Account Officer, Admin Officer, Procurement Officer and Audit Officer will be provided as supporting hands for AMS Admin and AMS HR & Budget for smooth execution of hospital tasks.

Responsibilities / Job Descriptions, Eligibility & Financial Implications for Management Structure of Hospital

5.6.2.1 Medical Superintendent

Shall be overall responsible for all the affairs of the Hospital

5.6.2.2 AMS Admin.

Shall be responsible for following functions in addition to his own duties:

1. General administration
2. IT/Data analysis/statistics keeping (biometric machines, etc.).
3. In case of outsourced interventions like QMS/EMR he shall be responsible for enforcement of contract and in case of violation shall ensure action has been taken as envisaged in the contract.
4. He shall be responsible for entry of data on Citizen Feedback Model.
5. He shall be responsible for ensuring collection of report of actions taken on CFM reports and entry of that on CFM.
6. He shall be responsible for implementation of any IT related initiative in the hospital.
7. He shall be responsible for better record keeping of hospital
8. He shall devise and implement systems for better record keeping of hospital

9. He shall ensure generation of all types of reports/information required of hospital by District Government/P&SHD/any other authorized Public agency

New Management Structure (NMS)

In place of the clerical positions, the P&SH Department has introduced a New Management Structure (NMS), in all District and Tehsil Headquarters Hospitals. The officers recruited as a part of the NMS have a minimum of 16 years of education. Their minimum qualification is MBA / B.Sc. Engineering / M.Com / Pharm-D / M.Cs / LLB / MPA / CA Inter / ACCA / ACMA / Master Degree or equivalent in relevant field etc. Their recruitments were undertaken through a competitive process by a third party testing service.

5.6.2.3 Admin Officer

Shall be responsible for general administrative affairs of hospital along with following functions:

1. Security
2. Transport
3. Parking
4. Janitorial
5. External housekeeping
6. Electrical works
7. Internal housekeeping
8. Laundry
9. Stores & supplies

In case these functions have been outsourced, he shall be responsible for enforcement of these contracts and shall ensure that penalties are imposed in case of violation of contract. In case he fails to enforce contract and the outsourced function is not performed at par as per contract and penalties have not been imposed he shall be liable for non-action. Moreover, only reporting of violation of contract shall not suffice but he has to ensure follow up till the penalty has been imposed and action as envisaged in contract in case of violation has been taken.

Eligibility Criteria

1. Minimum qualification Masters' degree in Economics/ Public Administration/ Finance/ MBA Finance/Administration or equivalent from HEC recognized University

2. Minimum 2 years post degree experience of administration (Additional credit may be given for hospital administration/ Public sector administration of similar nature)

5.6.2.4 Human Resource Officer

Shall be responsible for following:

1. Issuance of monthly Duty rosters & special duty rosters of Eid, Muhurram etc. of all clinical & non-clinical staff in hospital
2. Issuance of Transfer/postings orders within hospital
3. Taking of joining from new incumbents and charge relieving orders of relinquishing officials
4. File maintenance of all employees of hospital
5. Record of all enquires of employees of hospital
6. Leave record of employees
7. Adjustment of officials on duty during leave of concerned employee
8. Litigation/ legal issues of hospital (shall ensure all court cases are well attended and all legal matters of hospital are well taken care of)
9. Any other HR related function assigned by MS/AMS

Eligibility Criteria

1. Minimum qualification Masters' degree in Economics/ Public Administration/ Finance/ MBA HR/Management/ Finance/Administration or equivalent from HEC recognized University
2. Minimum 1 year post degree experience of administration (Additional credit may be given for hospital administration/Public sector experience of similar nature)

5.6.2.5 IT/Statistical Officer

He shall be responsible for IT support for all IT interventions in the hospital.

He shall be in liaison with HISDU, P&SHD for proper reflection of hospital record on HISDU dashboard. In case there is any discrepancy or error he shall resolve the issue. Moreover, he shall be responsible for functionality of all IT equipment.

Eligibility Criteria

1. Minimum qualification Masters' degree in Computer Science or equivalent from HEC recognized University
2. 2 years post degree experience of IT/Data analysis(Additional credit may be given for similar assignment experience)

5.6.2.6 Finance & Budget Officer

Shall be responsible for following:

1. Handling of all financial matters of hospital
2. Petty cash handling
3. Preparation of budget
4. Budget review
5. Maintenance of accounts and record
6. Any other function assigned by AMR HR & Finance/MS/P&SHD

Eigibility Criteria

1. Minimum qualification Masters' degree in Finance/ MBA Finance or equivalent from HEC recognized University (Additional credit may be given to Charter accountant/ACCA)
2. Minimum 2 years post degree experience of Finance, Accounts & Budget (Additional credit may be given for Public sector experience of similar nature)

5.6.2.7 Procurement Officer

Shall be responsible for following functions:

1. Procurement of all kinds for hospital
2. Shall be in liaison with P&SHD for procurements being conducted
3. Any other function assigned by AMS HR & Finance /MS/P&SHD

Eigibility Criteria

1. Minimum qualification Masters' degree in Finance/ MBA Finance or equivalent from HEC recognized University
2. 2 years post degree experience of procurement (Additional credit may be given for public sector experience of procurement)

5.6.2.8 Quality Assurance Officer

He shall be responsible for quality of all things in the hospital.

Eligible Criteria

1. Masters in Total Quality Management / Masters in Public Health/ Masters in Health Administration/ Masters in Hospital Management / Masters in Biochemistry / Biotechnology / Molecular Biology / Microbiology from an HEC recognized University or equivalent.

OR

16 years education along with Post graduate diploma in Total Quality Management/ Post graduate diploma in Health Safety and Environmental Management System / Post graduate diploma in Healthcare and Hospital Management / Quality Assurance or equivalent.

2. Minimum 1 Year post degree relevant experience.

5.6.2.9 Logistics Officer

He shall be responsible for Supply Chain, logistics, fleet, warehousing and inventory management, clearing and forwarding in the hospital.

Eligible Criteria

1. M.Sc. Supply Chain Management/ MBA or Equivalent.
2. One year experience in Supply Chain, logistics, fleet, warehousing and inventory management, clearing and forwarding.

5.6.2.10 Data Entry Operators (DEO)

Four Data entry operators shall help IT officer in dispensation of his responsibilities.

Eligible Criteria

1. Minimum qualification BA / B.Sc / B.COM / BCS or equivalent from HEC recognized University. In case of BA/B.COM candidate must have six months computer course / Diploma.

2. Proficient in MS Word/ MS Excel/ MS Power point (additional credit may be given for additional relevant certified computer courses)
3. 1 years post degree relevant experience

5.6.2.11 Assistant Admin Officer

Shall be responsible for general administrative affairs of hospital and assist the admin officer.

Eligibility Criteria

1. Minimum qualification Masters' degree in Social Sciences/Economics/ Public Administration/ Finance/ MBA Finance/Administration or equivalent from HEC recognized University
2. Minimum 2 years post degree experience of administration (Additional credit may be given for hospital administration/ Public sector administration of similar nature).

5.7 HR for QMS and MSDS and Day Care Center.

5.7.1.1 QMS Supervisor / Information Desk Officer

Shall be responsible whole QMS networking

Eligible Criteria

1. M.Sc. (Comp. Engineering, Electronics, Electrical Engineering, IT, Telecommunication, Com. Science, Software Engineering, MCS), BCS (Comp. Engineering, Electronics, Electrical Engineering, IT, Telecommunication, Com. Science, Software Engineering, MBA, BBA, MPA, IT related 16 years Education.
2. Experience in the field of Software/Hardware/Network/DATA Quality Assurance, IT projects, IT enabled organizations, CCTV Control Room monitoring, Call Centre, Networking, Software Development will be considered as an added advantage during interview process.
3. Excellent communication Skill (Urdu, English) and IQ level
4. Age Limit of 21-28 years for Male & 21-30 years for Female
5. Typing Speed: 30WPM.

5.7.1.2 Computer Operators

Eight Computer operators shall help QMS Supervisor in dispensation of his responsibilities.

Eligible Criteria

1. Minimum qualification 14 year or Masters' degree from HEC recognized University
2. Proficient in MS Word/ MS Excel/ MS Power point (additional credit may be given for additional relevant certified computer courses)
3. 35 Word per Minute. Excellent communication in English and Urdu.

5.7.2 Consultants (MSDS) Implementation & Clinical Audit

Eligible Criteria

1. MBBS & Masters in Public Health, or equivalent qualification.
2. The consultant must have 10 years of hands on experience of third party validation, clinical audit of hospitals, Minimum Service Delivery Standards (MSDSs) implementation / hand holding; Report Writing; working knowledge of international best practices in hospital management will be preferred. Proficiency in MS Office is must. Must have strong communication skills.

5.7.2.1 Terms of Reference (TORs) for Consultants Minimum Service Delivery Standards (MSDS) Implementation & Clinical Audit

Government of the Punjab, Primary and Secondary Healthcare Department (P&SHD) is implementing multiple initiatives to improve the quality of healthcare at DHQ/THQ level across the province. One of the initiatives is Primary and Secondary Healthcare Revamping program which is being implemented by the Project Management Unit (PMU). Currently PMU is also involved in the standardization of quality of care at facility level through uniform set of Standard Operating Procedures (SOPs) & Standard Medical Protocols (SMPs) for compliance. The department intends to make all DHQs and THQ hospitals of Punjab as MSDS compliant which have been devised by Punjab Healthcare Commission.

Punjab Healthcare Commission was established under the PHC Act 2010 as an autonomous regulatory body for health sector; with the purpose of improving the quality, safety and efficiency of healthcare service delivery for all Public and Private Healthcare Establishments (including Allopaths, Homeopaths and Tibbs) in the province of Punjab. The Punjab Healthcare Commission has developed

Minimum Service Delivery Standards (MSDS) for all hospitals to improve the quality of healthcare services all over the Punjab. All Healthcare Establishments are required to implement MSDS to acquire a License to deliver healthcare services in Punjab.

This standardization effort will not only ensure availability of minimum services delivery standards (MSDS), SOPs, SMPs at all levels, but also the other essential inputs for functioning of systems and processes to ensure the smooth and safe delivery of quality healthcare services. These will also create conducive working environment for healthcare providers.

5.7.2.2 Objectives

The objective of this assignment is to implement & check all SOPs, SMPs, Minimum Service Delivery Standards (MSDS) & conduct clinical audit for 125 DHQ/THQ hospitals. Furthermore, the consultant will also monitor ongoing multiple trainings at DHQ/THQ hospitals.

5.7.2.3 Scope of Work

1. Develop policy & strategy for clinical audit of 125 hospitals.
2. Develop detailed clinical audit plan, with expected deliverables from hospitals. 360 degrees clinical audit.
3. Visit DHQ/THQ hospitals, to assess MSDS implementation and detailed report generation with short coming & highlight areas of improvement.
4. Review SOPs, SMPs & ISO Standards in hospitals to identify non-compliance.
5. Visit DHQ/THQ hospitals to implement clinical audit as per devised strategy, as well as monitoring and implementing MSDS standards.
6. Prepare detailed visit reports of clinical short comings; and suggest, and implement improvement plan.
7. Monitoring & auditing of patient referral system, detailed report on error and recommendations on rectification of errors.
8. Visit DHQ/THQ hospitals to implement clinical audit as per devised strategy, as well as monitoring and implementing MSDS standards.
9. Prepare detailed visit reports of clinical short comings; and suggest, and implement improvement plan.
10. Monitoring & auditing of patient referral system, detailed report on error and recommendations on rectification of errors.
11. Monitoring and evaluation of multiple trainings imparted at DHQ/THQ hospitals.
12. Any other relevant task assigned by Project Director/Director Quality Assurance / Project Manager.

5.7.2.4 Reporting Arrangements

- The Consultant (MSDS & Clinical Audit) will report to the Project Director/Director Quality Assurance/Senior Project Manager, P&SHD

5.7.2.5 Duration of Assignment

- The duration of assignment will initially be for THREE MONTHS / 120 DAYS which will be extendable subject to satisfactory performance.

5.7.2.6 Outputs / Key Deliverables

- Study/desk review the relevant Minimum Service Delivery Standards (MSDS) prescribed by PHC & ISO Standards, train the hospital staff/monitor/facilitate their implementation.
- Study/desk review the existing Standard Operating Procedures (SOPs), train the hospital staff/monitor/facilitate their implementation and suggest improvements where necessary.
- Study/desk review the existing SMPs, train the hospital staff/monitor/facilitate their implementation and suggest improvements where necessary.
- Conduct hospital visits of 125 DHQ/THQ hospitals (each DHQ hospital to be visited monthly & each THQ hospital every three months).
- Conduct formal hospital survey for confirming the implementation of MSDS on the relevant Scoring Matrix.
- Submit detailed report of each hospital visit on a standard format prescribed for the purpose.
- Conduct a system, process analysis with special emphasis on clinical audit and submission of detailed report accordingly.

5.7.2.7 Remunerations

- The consultant will be paid amount of Rs. **4500-6500/- per day** with no other benefits.
- All logistics will be arranged/reimbursed by PMU for field visits (accommodation, refreshments etc).

5.7.2.8 Terms of Payment

- Consultant will be paid on monthly basis throughout the contract period.

5.7.3 HR for Day Care Center

5.7.3.1 Manager Day Care Center (DCC)

Shall be responsible for general administrative affairs of DCC.

Eligibility Criteria

1. Minimum qualification Masters' degree in Economics/ Public Administration/ Finance/ MBA Finance/Administration or equivalent from HEC recognized University
2. Minimum 2 years post degree experience of administration (Additional credit may be given for hospital administration/ Public sector administration of similar nature)

5.7.3.2 Montessori Trained Teacher

Shall be responsible for basic education of children.

Eligibility Criteria

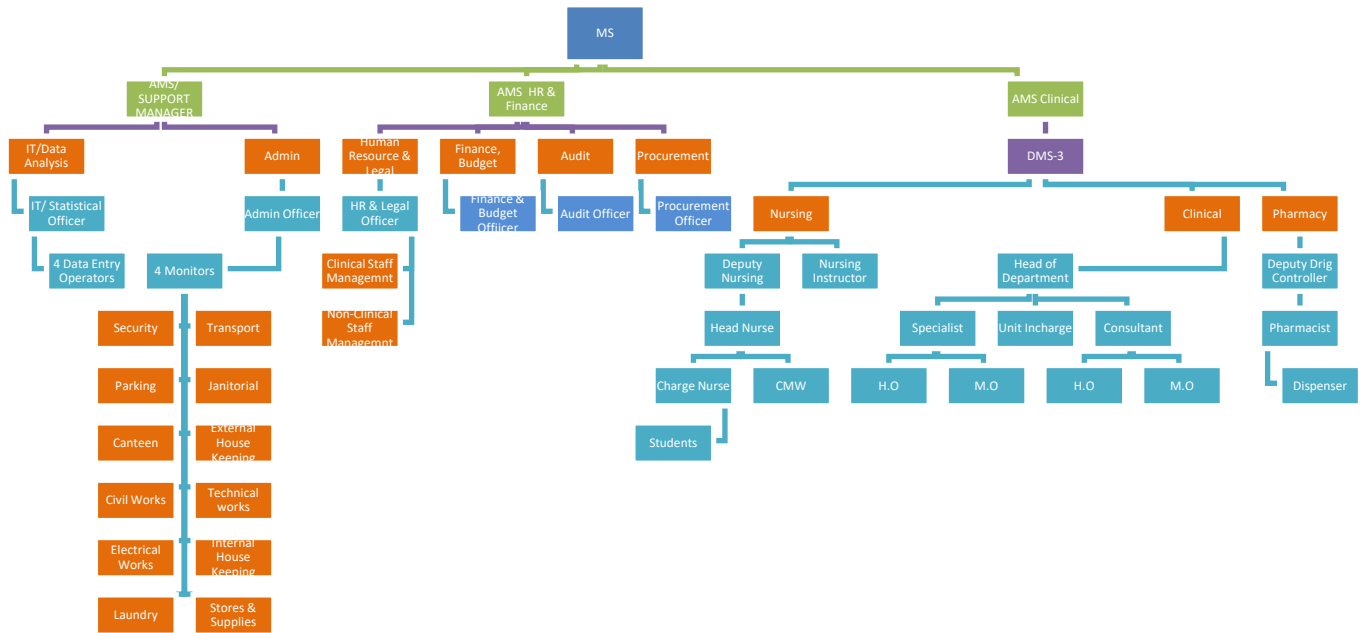
1. Minimum qualification BA/BSC or equivalent from HEC recognized University along with B.Ed.
2. Minimum 1 years post degree experience of teaching (Additional credit may be given for Public sector teaching of similar nature)

5.7.3.3 Attendant / Care Giver

Shall be responsible for special care of the children.

Eligibility Criteria

Minimum qualification Matric or equivalent alongwith diploma in relevant field



The Planning & Development Board vide letter No.12(24)PO(COORD-II)P&D/2022 dated 14-07-2022 has informed that revised standard pay package were discussed and approved by the 83rd PDWP meeting held on 28-06-2022 under the chairmanship of Chairman P&D Board for all ADP funded Project posts of Department /Organizations working in Government of the Punjab:

<u>Project Pay Scale (PPS)</u>	<u>Revised Project Pay Scales (Permissible Range) (PKR)</u>	<u>Annual Increment Up to % age</u>
PPS-1	28,000 --- 44,800	10
PPS-2	35,000 --56,000	10
PPS-3	43,750 -- 70,000	10
PPS-4	52,500 -- 84,000	10
PPS-5	70,000 --112000	10
PPS-6	105,000 -- 172,200	8
PPS-7	157,500 --258,300	8
PPS-8	218,750--358,750	8
PPS-9	306,250--502,250	8

PPS-10	437,500--700,000	5
PPS-11	612,500-- 980,000	5
PPS-12	875,000 --1,400,000	5

In view of the above the Pay package of NMS staff has been revised. Financial Implications of New Management Structure Model based on revised Standard Pay Package (PPS) approved by the 83rd PDWP meeting held on 28-06-2022:

Name of Post	No. of Employees	Original Pay package approved		Revised Pay package	
		Per Month Salary	Salary for One Year	Per Month Salary	Salary for One Year
Admin Officer	1	80,000	960,000	105,000	1,260,000
Human Resource Officer	1	80,000	960,000	105,000	1,260,000
IT/Statistical Officer	1	80,000	960,000	105,000	1,260,000
Finance & Budget Officer	1	80,000	960,000	105,000	1,260,000
Procurement Officer	1	80,000	960,000	105,000	1,260,000
Quality Assurance Officer	1	80,000	960,000	105,000	1,260,000
Logistics Officer	1	80,000	960,000	105,000	1,260,000
Data Entry Operator (DEO)	2	35,000	840,000	44,000	1,056,000
Assistant admin Officer	2	50,000	1,200,000	70,000	1,680,000
Total	11		8,760,000	849,000	11,556,000

5.8 Other Initiatives:

There are many other initiatives which government plans to undertake in order to improve healthcare services in the province. These include:

- Rehabilitation of Emergency Ward
- Fixture of Benches
- Addition of Bracket Fans/Water Coolers/LCDs with signage
- Supply of Laboratory/ Equipment/USG/ECG etc.
- CCU Improvement
- Installation of Water filtration plants
- Replacement of Bed sheets/Pillows/Matresses
- Installation of Transformers/Dual Connection
- Improvement of Labor rooms/Nurseries

- Maintenance and replacement of Air-conditioners through Outsourcing
- Blood Bank improvement
- Installation of CCTV Cameras
- Installation of Basic Fire-fighting Equipment
- Up gradation of Pharmacy and medicine Store
- Improvement of Internal Roads and laying of Tough pavers
- External Development
- Rehabilitation of Hepatitis/T.B Control

The PMU is essential to deliver the project end-item within budget and time limitations, in accordance with technical specifications, and, when specified, in fulfillment of project objectives.

5.9 Patient Management Protocol

5.9.1 Emergency:

1. Initial reception and computerization of data, issuance of medical record number and preparation of record file.
2. Patients seen by C.M.O. initial assessment (brief history and physical examination) is entered on the emergency slip/file initial treatment is started.
3. C.M.O calls the medical officer / house officer of the relevant department who takes on of the following action:-
 - i. Discharges the patient from emergency department after the patient is stabilized (himself or after consultation).
 - ii. Returns the patient in emergency department and inform the consultant or call such patient is either discharged after some time i.e. 2 hours of admitted later on
 - iii. Patient is straight way admitted by the medical officer himself or in consultation with the consultant
4. A separate record is maintained by each department. Each patient discusses at the morning meeting and any pitfalls are any pitfalls are corrected.
5. The patient who is admitted is again entered into the computer in the ward, complete history and physical examination is carried out and relevant lab & radiological investigations are ordered. (If not already done in the emergency department).

6. The definitive management is either started by the medical officer himself or in consultation with the consultant. (Telephone or physically). The patient is prepared for surgery if required.
7. At the evening round of the ward, the patients admitted throughout the day (Through OPD or emergency) are seen by the specialist. Appropriate changes in the management are carried out.
8. During the night, medical officer & house officer will be on duty and they will remain in contact with consultant.
9. In the morning round all the new admissions and old patients are thoroughly discussed management / treatment changed, surgery ordered or discharge ordered.
10. The discharge certificate is either prepared by the house officer or medical officer. If prepared by the house officer, it is countersigned by the medical officer

Appropriate changes are made in the computer record after discharge. The file is sent to the central record.

5.9.2 O.P.D:

1. After the initial registration and issuance of computerized number patient is sent to the relevant medical officer with the OPD slip/file.
2. The medical officer / house officer of the relevant department performs the initial assessment. The medical officer himself advises the treatment / investigation or refers the patients to the specialist or admits the patient.
3. After admission. The same routine is followed which has been mentioned in the case of admission through emergency.

5.9.3 Death or End of Life Management.

1. The decision regarding resuscitation is made at the initial stages by the medical officer / house officer or specialist in consultation with the patient himself and / attendants.
2. The DNR (Do not resuscitate) patients are only seen by the medical officer/ hose officer at the time of death.
3. For the patients to be resuscitated, a special code (blue code) is declared when patient go onto cardiac or the terminal events.
4. The policy for very sick / terminal and dying patients is formulated at the hospital administration level and appropriate modifications are decided in the relevant department for each patient.

5. Every death is discussed weekly at the mortality committee at the department and at the hospital level cleared by the Medical Superintendent.

5.9.4 Inventory Control System

The stock keeping and issuance of such items shall also be controlled and monitored through closer supervision and checks and balance system built in the software. The stock and expense of durable and consumable items will be kept in the system and also as hard copies. The main stores computers will be linked with the sub stores computers through networking. The areas like emergency. Outpatient department, Indoor registration desks, Laboratory and Radiology Department, ICUs, etc., will have linkages with the main and sub stores to know about:-

1. Stock in hand of various items
2. New receipt of these items
3. The items which have been issued to other departments
4. The Items which are not available
5. The expenditure incurred on the purchase.

The budget and details of account shall be linked with the financial control system.

5.9.5 Project Monitoring Committee

A Project Monitoring Committee is proposed hereby as under to monitor the project regarding Revamping of THQ Hospital:

- | | | |
|----|----------------------------------|--------------------|
| 1. | Deputy Commissioner | (Chairman) |
| 2. | District Monitoring Officer | (Member) |
| 3. | Executive Engineer Buildings | (Member) |
| 4. | Assistant Commissioner Concerned | (Member) |
| 5. | MS THQ Hospital | (Secretary/Member) |

The committee will monitor the progress of the project and will hold regular weekly meeting to review the progress.

5.10 Relationship with Sectoral Objectives

The Government of the Punjab, Primary & Secondary Healthcare Department is in the process of undertaking number of initiatives to improve health care delivery system in the province. The Government of the Punjab is firmly committed to provide health care services at the doorstep of the community through integrated approach. A number of projects to improve emergency health care service particularly targeting on the promptness and quality have been

initiated. Although major focus is on disease prevention and health promotion strategies by providing specialist health care services to victims of various diseases in the patients is one of the top most priority. The instant project will be a major wing to health department with line departments.

Mainly the linkage with social welfare and human empowerment, labour and manpower, Education Department, Special Education, Home of the project will be in a vibrant environment in the holistic manner. The scope of the project itself aims to establish horizontal linkage with all the stakeholders through multi-sectorial approach. The health care facilities and ongoing services provided in the hospital will seek strength and viability from its linkage and public ownership.

6. DESCRIPTION AND JUSTIFICATION OF PROJECT

6.1 JUSTIFICATION OF PROJECT

attached

1. Description, Justification and Technical Parameters

The scheme has been estimated on face of the factual basic requirements and if needed, alterations and has been quoted in this PC-I. The Population of Liaquatpur District Rahim Yar Khan is more than 0.511 million. The area of the THQ Hospital Liaquatpur District Rahim Yar Khan is 308,597 SFT land.

6.1 Description and Justification

The Project Management Unit, Revamping Program, Primary and Secondary Healthcare Department planned to start the 2nd Phase of the said revamping program. The instant PC-I is also meant for provision of requisite biomedical and non-biomedical equipment, Electricity, Furniture & Fixture, Signage, HR and outsourcing of services for THQ Liaquatpur District Rahim Yar Khan.

Revamping of THQ Liaquatpur District Rahim Yar Khan constitutes of value addition in all major domains of the hospital including improvement of Civil infrastructure, addition of water filtration plant facility, value addition in Emergency ward and making the health facility more equipped with modern bio-medical equipment. State of the art furniture and fixtures complemented by interior and exterior decors are also part of this revamping project backed by the thought of dedicated express line of electricity to ensure smooth operations of hospitals will bring the modern health facilities in healthy and comfortable environment at the door step of masses. Introduction of new model of outsourcing of laundry services to ensure provision of neat and clean bed sheets, pillow covers, blankets etc. round the clock is also a part of this project. Fool proof security and adequate cleanliness measures of whole health facility are also proposed in this PC-I.

Civil work component will be carried out through C&W Department instead of District Health Authority for this hospital. Value addition in Emergency block is proposed in four domains i.e. Triage, Minor O.T, Specialized care room and emergency ward. Addition of Water Filtration Plant facility where it is not available as unclean or polluted water is devastating for human health. A key consideration was made while selecting furniture and its compatibility with hospital grade cleaners, detergents and disinfectants. Signage is an effective interface between the user and intended facility. Effective signage promotes the healthcare facility in a patient friendly manner. Access is an important part of quality of care. A crucial aspect for patient satisfaction is their comfort levels with the facility itself i.e. a person's ease in navigating a facility, and the timeliness in receiving care. Clear and proper signage at strategic points helps patients in reaching their destination without losing much of their valuable time and saves lot of their efforts in unnecessary enquiring from persons. In this regard, the Equipment of Emergency, Bio-Medical, Non-Bio-Medical, Electricity, Signage, Janitorial, Security, Laundry, Maintenance of Generator and Horticulture have been added as per actual requirement of the Hospital. The Equipment of MSDS, IT, Furniture Fixture, Day Care Center, HR, Medical Gases, Cafeteria are fixed in all hospitals as per yardstick

established by P& SH Department. Prior to initiation of this exercise standardization of required facilities was done by committee of experts in P & SH Department and on the basis of it, gaps were identified which would be covered under this PC-I.

Justification for 3rd Revision of PC-I

1. Originally the Civil work component of the scheme was planned to be executed by the Health Council of the concerned District Health Authority based on cost estimates prepared by the Infrastructure Wing of PMU and approved by the DDSC. Accordingly, funds of Rs.3, Rs.5 and Rs.10 million were provided during FY 2017-18 for the execution of work as per parameters provided to these THQ Hospitals. However, no reasonable revamping civil work was carried out and hence did not fulfil the requirement and the objectives of the Revamping Program. Now P&SHD has decided to carry out further revamping of Civil work through Communication and Works Department Punjab to accomplish the uniformity of THQ Hospitals with already revamped hospitals of Phase-I. Hence the Rough Cost Estimates of the Punjab Buildings Department has been included in the civil work cost of this scheme.
2. Primary & Secondary Healthcare Department (P&SHD) made a decision to shift all the clerical posts in DHQ / THQ hospitals of Punjab to District Health Authorities as per notification dated 24th October, 2017. This administrative decision was taken due to a multiplicity of reasons which were adversely affecting healthcare service delivery in the hospitals. Primarily, these clerical posts were not specialized in any particular field, and therefore, the HR hired against these posts were generalized to the extent that they were not able to perform functions of Hospitals and Health Specific tasks that any medical administration should ideally perform. Additionally, public complaints against the clerical staff on issues such as behavior, performance created an environment of malfeasance in all hospitals. In place of the clerical positions, the Department introduced a New Management Structure (NMS), in all District and Tehsil Headquarters Hospitals. The officers/officials recruited as a part of the NMS have a minimum of 16 years of education. Introduction of New Management Structures (NMS) across all secondary hospitals in the Punjab, has allowed for the overall efficiency of District and Tehsil Headquarters Hospitals. In each Tehsil Headquarter Hospital HR under MNS has been provided for smooth running of the health services. Pay Package for NMS Staff was never been revised since 2017-18, therefore it was decided to approach the P&D Department for revision of Pay package. The PDWP approved revised pay page in its meeting held on 08-02-2022 based on PPS approved in 60th PDWP meeting as under: -

Name of Posts	60 th PDWP Meeting		
	PPS Assigned	Permissible Range (PKR) & Annual increment	Approved Pay Package
HR & Legal Officer, IT & Statistical Officer, Admin Officer, Procurement Officer, Finance & Budget Officer, Logistics Officer, Quality Assurance Officer, Audit Officer and Biomedical Engineer	PPS-6	75,000-105,000 (8% annual incr.)	75,000
Assistant Admin Officer	PPS-5	50,000-75000 (10% annual incr.)	50,000
Data Entry Operator	PPS-3	35,000-55,000 (10% annual incr.)	35,000

Now the Planning & Development Board vide letter No.12(24)PO(COORD-II)P&D/2022 dated 14-07-2022 has informed that revised standard pay package were discussed and approved by the 83rd PDWP meeting held on 28-06-2022 under the chairmanship of Chairman P&D Board for all ADP funded Project posts of Department /Organizations working in Government of the Punjab. Therefore, the revised Pay Package has been incorporated in the revised PC-I.

3. As the gestation period of the PC-I till 30.06.2023, therefore, the cost of NMS has been revised for smooth running of the Tehsil Headquarter Hospitals and hence PC-I has been proposed till 30- 06-2025.
4. Infrastructure team has conducted the Joint visits with the team of C&W Department. During the field visits, few alterations were recommended by the technical teams which have been incorporated in the Revised Rough Cost Estimates of the subject scheme and have been attached with the PC-I along with comparative statement. Therefore, Civil works component cost has been increased from Rs. 44.187 million to Rs. 49.535 million due to few changes in the scope and MRS rates (2nd Bi-annual 2022).

85 THQ Hospitals covered under the Program:

The location map of the 85 THQ hospitals that will be taken up for rehabilitation in this program is given below:

PROJECT MANAGEMENT UNIT
 PRIMARY & SECONDARY HEALTHCARE DEPARTMENT



LOCATION OF DHQ AND THQ HOSPITALS IN PUNJAB



6.2 SECTORAL SPECIFIC INFORMATION

Social Sectors, Health Department

7. CAPITAL COST ESTIMATES

Financial Components: Revenue
Cost Center:OTHERS- (OTHERS)
Fund Center (Controlling):N/A

Grant Number:Development - (PC22036)
LO NO:LO17011160
A/C To be Credited:Assan Assignment

PKR Million

S r #	Object Code	2019-2020		2020-2021		2021-2022		2022-2023		2023-2024		2024-2025	
		Local	Foreign	Local	Foreign	Local	Foreign	Local	Foreign	Local	Foreign	Local	Foreign
1	A05270-To Others	0.000	0.000	0.000	0.000	0.000	0.000	0.000	0.000	0.000	0.000	0.000	0.000
2	A12403-Other Buildings	0.000	0.000	0.000	0.000	0.000	0.000	0.000	0.000	0.000	0.000	0.000	0.000
Total		0.000	0.000	0.000	0.000	0.000	0.000	0.000	0.000	0.000	0.000	0.000	0.000

Financial Components: Capital
Cost Center:OTHERS- (OTHERS)
Fund Center (Controlling):LE4203

Grant Number:Government Buildings - (PC12042)
LO NO:LO22010069
A/C To be Credited:Account-I

PKR Million

S r #	Object Code	2019-2020		2020-2021		2021-2022		2022-2023		2023-2024		2024-2025	
		Local	Foreign	Local	Foreign	Local	Foreign	Local	Foreign	Local	Foreign	Local	Foreign
1	A12403-Other Buildings	0.000	0.000	0.000	0.000	0.000	0.000	0.000	0.000	0.000	0.000	0.000	0.000
2	A05270-To Others	0.000	0.000	0.000	0.000	0.000	0.000	0.000	0.000	0.000	0.000	0.000	0.000

Total	0.000	0.000	0.000	0.000	0.000	0.000	0.000	0.000	0.000	0.000	0.000	0.000
--------------	--------------	--------------	--------------	--------------	--------------	--------------	--------------	--------------	--------------	--------------	--------------	--------------

Abstract of Cost

Name of THQ Hospital	THQ LIAQUATPUR											
	Original			1st Revised			2nd Revised			3rd Revised		
Scope of work	Cost in million											
	Capital	Revenue	Total	Capital	Revenue	Total	Capital	Revenue	Total	Capital	Revenue	Total
Capital component												
Internal development	0.000	25.147	25.147	0.000	25.147	25.147	33.321	10.000	43.321	42.987	10.000	52.987
External development	0.000	3.811	3.811	0.000	3.811	3.811	10.866	0.000	10.866	6.548	0.000	6.548
Water filtration plant	0.000	5.600	5.600	0.000	5.600	5.600	0.000	0.000	0.000	0.000	0.000	0.000
Total Capital Component	0.000	34.558	34.558	0.000	34.558	34.558	44.187	10.000	54.187	49.535	10.000	59.535
Revenue component												
Emergency	0.000	0.000	0.000	0.000	0.000	0.000	0.000	0.000	0.000	0.000	0.000	0.000
MSDS	0.000	8.647	8.647	0.000	8.647	8.647	0.000	9.654	9.654	0.000	13.438	13.438
Med. Machinerv and Equipment	0.000	50.361	50.361	0.000	50.361	50.361	0.000	68.906	68.906	0.000	109.275	109.275
Electricity	0.000	20.269	20.269	0.000	20.269	20.269	0.000	29.169	29.169	0.000	33.669	33.669
IT & QMS & Surveillance	0.000	14.515	14.515	0.000	14.515	14.515	0.000	16.715	16.715	0.000	20.120	20.120
Furniture and Fixtures	0.000	13.504	13.504	0.000	13.504	13.504	0.000	13.504	13.504	0.000	18.788	18.788
Interior and Exterior decorations/ Signage	0.000	3.405	3.405	0.000	3.405	3.405	0.000	4.695	4.695	0.000	4.695	4.695
Day Care Center	0.000	1.600	1.600	0.000	1.600	1.600	0.000	1.600	1.600	0.000	1.600	1.600
Human resource (HR) plan	0.000	17.220	17.220	0.000	17.220	17.220	0.000	35.150	35.150	0.000	51.589	51.589
LC Deficit during procurement (currency fluctuation)								2.575	2.575		2.575	2.575
Total Revenue component	0.000	129.521	129.521	0.000	129.521	129.521	0.000	181.968	181.968	0.000	255.749	255.749
Outsourcing component												
Janitorial Services	0.000	15.934	15.934	0.000	0.000	0.000	0.000	0.000	0.000	0.000	0.000	0.000
Security and Parking services	0.000	6.370	6.370	0.000	0.000	0.000	0.000	0.000	0.000	0.000	0.000	0.000
Laundry Services	0.000	3.000	3.000	0.000	0.000	0.000	0.000	0.000	0.000	0.000	0.000	0.000
Maintenance (Generator)	0.000	2.270	2.270	0.000	0.000	0.000	0.000	0.000	0.000	0.000	0.000	0.000
MEP	0.000	4.126	4.126	0.000	0.000	0.000	0.000	0.000	0.000	0.000	0.000	0.000
Medical Cases	0.000	1.304	1.304	0.000	0.000	0.000	0.000	0.000	0.000	0.000	0.000	0.000
Cafeteria	0.000	6.743	6.743	0.000	0.000	0.000	0.000	0.000	0.000	0.000	0.000	0.000
Horticulture services	0.000	2.109	2.109	0.000	0.048	0.048	0.000	0.048	0.048	0.000	0.048	0.048
Total outsourcing cost	0.000	41.857	41.857	0.000	0.048	0.048	0.000	0.048	0.048	0.000	0.048	0.048
Total	0.000	205.936	205.936	0.000	164.127	164.127	44.187	192.016	236.203	49.535	265.797	315.332
Contingency (1%) only on Civil Component	0.000	0.346	0.346	0.000	0.000	0.000	0.000	0.000	0.000	0.000	0.000	0.000
Third Party Monitoring (TPM) (1%)	0.000	2.059	2.059	0.000	0.000	0.000	0.000	0.000	0.000	0.000	0.000	0.000
Third Party Validation (TPV) (1%)	0.000	2.059	2.059	0.000	0.000	0.000	0.000	0.000	0.000	0.000	0.000	0.000
Grand Total	0.000	210.400	210.400	0.000	164.127	164.127	44.187	192.016	236.203	49.535	265.797	315.332

MSDS

Sr. No.	ITEM DESCRIPTION	Original			1st Revised			2nd Revised			3rd Revised		
		Quantity Required	Actual Unit Price	Actual Total Cost(Rs)	Quantity Required	Actual Unit Price	Actual Total Cost(Rs)	Quantity Required	Actual Unit Price	Actual Total Cost(Rs)	Quantity Required	Actual Unit Price	Actual Total Cost(Rs)
1	Histology slide boxes	3	3,100	9,299	3	3,100	9,299	3	4,500	13,500	3	4,500	13,500
2	Labeling Device connected with Computer	3	60,000	180,000	3	60,000	180,000	3	80,000	240,000	3	80,000	240,000
3	Safe Transportation Boxes	2	15,750	31,500	2	15,750	31,500	2	18,000	36,000	2	18,000	36,000
4	Portable Safety Exhaust Hood	1	160,000	160,000	1	160,000	160,000	1	250,000	250,000	1	450,000	450,000
5	Centrifuge Machine	0	149,336	-	0	149,336	-	0	250,000	-	0	325,000	-
6	Hot plates	2	26,250	52,500	2	26,250	52,500	2	45,000	90,000	2	55,000	110,000
7	Water bath	1	157,500	157,500	1	157,500	157,500	1	157,500	157,500	1	300,000	300,000
8	Complaint boxes	10	3,150	31,500	10	3,150	31,500	10	3,150	31,500	10	3,150	31,500
9	Spine boards with Neck holders	4	31,080	124,320	4	31,080	124,320	4	31,080	124,320	4	31,080	124,320
10	Sensitometer	1	137,325	137,325	1	137,325	137,325	1	137,325	137,325	1	137,325	137,325
11	Densitometer personal	2	191,391	382,782	2	191,391	382,782	2	191,391	382,782	2	191,391	382,782
12	Box of Films	2	26,250	52,500	2	26,250	52,500	2	30,000	60,000	2	30,000	60,000
13	Aluminium Step Wedge	1	26,250	26,250	1	26,250	26,250	1	26,250	26,250	1	26,250	26,250
14	Non-Mercury thermometer	10	305	3,045	10	305	3,045	10	350	3,500	10	750	7,500
15	Brass or copper mesh screen	2	5,250	10,500	2	5,250	10,500	2	5,250	10,500	2	5,250	10,500
16	Wheel Chairs	0	31,500	-	0	31,500	-	0	35,000	-	0	35,000	-
17	Statures	0	67,830	-	0	67,830	-	0	75,000	-	0	75,000	-
18	Blood Warmer	3	246,750	740,250	3	246,750	740,250	3	275,000	825,000	3	275,000	825,000
19	Sequence Compression Device	2	210,000	420,000	2	210,000	420,000	2	230,000	460,000	2	600,000	1,200,000
20	Blood Bank Refrigerators with	0	682,500	-	0	682,500	-	0	700,000	-	0	1,469,900	-
21	Data Coder	1	84,000	84,000	1	84,000	84,000	1	100,000	100,000	1	-	-
22	Plasma Separator 1	0	4,200,000	-	0	4,200,000	-	0	4,500,000	-	0	4,500,000	-
23	Blood Storage Cabinet	1	682,500	682,500	1	682,500	682,500	1	700,000	700,000	1	1,469,900	1,469,900
24	Resuscitation Trolley	0	244,733	-	0	244,733	-	0	400,000	-	0	491,350	-
25	Ultra sound machine gyne	0	1,403,325	-	0	1,403,325	-	0	1,700,000	-	0	2,150,000	-
26	Delivery Table	0	47,250	-	0	47,250	-	0	47,250	-	0	48,500	-
27	Height and weight scale	4	8,400	33,600	4	8,400	33,600	4	10,000	40,000	4	31,500	126,000
28	Suction Electronic	0	259,350	-	0	259,350	-	0	275,000	-	0	275,000	-
29	Fetal Heart Rate Detector	1	144,375	144,375	1	144,375	144,375	1	175,000	175,000	1	275,000	275,000
30	Ambo bag	0	17,325	-	0	17,325	-	0	19,000	-	0	19,000	-
31	Neonatal size face mask	4	578	2,310	4	578	2,310	4	1,200	4,800	4	1,500	6,000
32	Exchange transfusion trays	2	10,000	20,000	2	10,000	20,000	2	10,000	20,000	2	12,000	24,000
33	Shoe racks SS	4	39,900	159,600	4	39,900	159,600	4	39,900	159,600	4	39,900	159,600
34	Sterilizer	0	2,940,000	-	0	2,940,000	-	0	3,500,000	-	0	7,800,000	-
35	Washer disinfectant	0	-	-	0	-	-	0	-	-	0	-	-
36	Packing table	0	-	-	0	-	-	0	-	-	0	-	-
37	Digital Sealer Printer	1	420,000	420,000	1	420,000	420,000	1	480,000	480,000	1	520,000	520,000
38	Backup Auto Clave	0	441,000	-	0	441,000	-	0	550,000	-	0	789,625	-
39	Racks for Manual	10	21,000	210,000	10	21,000	210,000	10	37,500	375,000	10	56,160	561,600
40	Locked Racks for MSDS Data	2	21,000	42,000	2	21,000	42,000	2	37,500	75,000	2	56,160	112,320
41	Eye Wash Station with shower	3	300,000	900,000	3	300,000	900,000	3	350,000	1,050,000	3	350,000	1,050,000
42	Air Curtain	4	50,190	200,760	4	50,190	200,760	4	60,000	240,000	4	60,000	240,000
43	Fire Sand Buckets with stand	5	15,000	75,000	5	15,000	75,000	5	20,000	100,000	5	20,000	100,000
44	Smoke Detectors	10	7,350	73,500	10	7,350	73,500	10	8,500	85,000	10	8,500	85,000
45	Heat Detector	5	8,400	42,000	5	8,400	42,000	5	10,000	50,000	5	10,000	50,000
46	Gas Detector	5	6,300	31,500	5	6,300	31,500	5	7,500	37,500	5	7,500	37,500
47	Fire Blankets	10	2,783	27,825	10	2,783	27,825	10	3,200	32,000	10	3,200	32,000
48	Fire Alarms	10	5,250	52,500	10	5,250	52,500	10	6,500	65,000	10	6,500	65,000

MSDS

Sr. No.	ITEM DESCRIPTION	Original			1st Revised			2nd Revised			3rd Revised		
		Quantity Required	Actual Unit Price	Actual Total Cost(Rs)	Quantity Required	Actual Unit Price	Actual Total Cost(Rs)	Quantity Required	Actual Unit Price	Actual Total Cost(Rs)	Quantity Required	Actual Unit Price	Actual Total Cost(Rs)
49	Identification Bands	100	3	315	100	3	315	100	3	300	100	3	300
50	Wet Flooring Signages	0	431	-	0	431	-	0	550	-	0	750	-
51	Key Box	6	8,190	49,140	6	8,190	49,140	6	10,000	60,000	6	10,000	60,000
52	Dehumidifier	0	58,800	-	0	58,800	-	0	70,000	-	0	100,000	-
53	Tourniquet	4	840	3,360	4	840	3,360	4	850	3,400	4	1,500	6,000
54	LAB SAFETY BOX	2	3,150	6,300	2	3,150	6,300	2	4,000	8,000	2	4,000	8,000
55	densitometer	0	210,000	-	0	210,000	-	0	210,000	-	0	210,000	-
56	vending machine	0	630,000	-	0	630,000	-	0	630,000	-	0	630,000	-
57	Automatic shoe cover machine	2	296,100	592,200	2	296,100	592,200	2	332,500	665,000	2	332,500	665,000
58	Vein Finder	2	630,000	1,260,000	2	630,000	1,260,000	2	630,000	1,260,000	2	630,000	1,260,000
59	Blood Sample Vials (BOXES)	3	13	38	3	13	38	3	15	45	3	15	45
60	Bassinets	5	21,000	105,000	5	21,000	105,000	5	22,000	110,000	5	22,000	110,000
61	Chemical Spill Cleanup kit	2	100,000	200,000	2	100,000	200,000	2	100,000	200,000	2	100,000	200,000
62	Digital Temperature Humidity Guage	4	15,000	60,000	4	15,000	60,000	4	15,000	60,000	4	15,000	60,000
63	Bio Cleaning and Disinfection System	1	650,000	650,000	1	650,000	650,000	1	650,000	650,000	1	2,200,000	2,200,000
	Total			8,647,094			8,647,094			9,653,822			13,437,942
				8.647			8.647			9.654			13.438

Medical Equipment

Sr. No.	Area	Name of Equipment	Yard Stick	Original				1st Revised				2nd Revised				3rd Revised			
				Available Quantity	Required Quantity	Cost per Unit	Total Cost	Available Quantity	Required Quantity	Cost per Unit	Total Cost	Available Quantity	Required Quantity	Cost per Unit	Total Cost	Available Quantity	Required Quantity	Cost per Unit	Total Cost
1	Laboratory	Semi Auto Clinical Chemistry Analyzer	1	2	0	449,295	-	2	0	449,295	-	2	0	550,000	-	2	0	550,000	-
2		Hematology Analyzer	1	0	1	427,350	427,350	0	1	427,350	427,350	0	1	550,000	550,000	0	1	750,000	750,000
3		Electrolyte Analyzer	1	0	1	427,350	427,350	0	1	427,350	427,350	0	1	550,000	550,000	0	1	550,000	550,000
4		Blood Gas Analyzer	0	0	0	2,744,858	-	0	0	2,744,858	-	0	0	3,200,000	-	0	0	1,400,000	-
5		Clinical Microscope	1	5	0	132,825	-	5	0	132,825	-	5	0	180,000	-	5	0	250,000	-
6		Water Bath	1	1	0	60,000	-	1	0	60,000	-	1	0	157,500	-	1	0	325,000	-
7		Hot air Oven	1	5	0	210,000	-	5	0	210,000	-	5	0	385,000	-	5	0	450,000	-
8		Distilled water plant	1	0	1	52,500	52,500	0	1	52,500	52,500	0	1	75,000	75,000	0	1	125,000	125,000
9		Auto pipettes	10	4	6	31,500	189,000	4	6	31,500	189,000	4	6	40,500	243,000	4	6	45,000	270,000
10		glass wares	0	0	0	105,000	-	0	0	105,000	-	0	0	105,000	-	0	0	105,000	-
11	Centrifuge Machine	2	4	0	149,336	-	4	0	149,336	-	4	0	250,000	-	4	0	400,000	-	
12	X-Rays	Static X-ray Machine	1	0	1	4,200,000	4,200,000	0	1	4,200,000	4,200,000	0	1	6,000,000	6,000,000	0	1	12,000,000	12,000,000
13		Mobile X-Ray Machine	0	1	0	3,850,524	-	1	0	3,850,524	-	1	0	4,300,000	-	1	0	9,800,000	-
14		Computerized Radiography System	0	0	0	4,018,245	-	0	0	4,018,245	-	0	0	4,500,000	-	0	0	4,500,000	-
15		Dental X-Ray	0	1	0	282,975	-	1	0	282,975	-	1	0	350,000	-	1	0	525,000	-
16		Lead apron and PPE	2	1	1	52,500	52,500	1	1	52,500	52,500	1	1	60,000	60,000	1	1	85,000	85,000
17		Density meter personal (Add)	0	0	0	210,000	-	0	0	210,000	-	0	0	210,000	-	0	0	250,000	-
18		Lead glass /shield	0	1	0	105,000	-	1	0	105,000	-	1	0	105,000	-	1	0	150,000	-
19	Lead Walls	0	1	0	525,000	-	1	0	525,000	-	1	0	525,000	-	1	0	525,000	-	
20	Ultrasound	Portable/Mobile Ultrasound	0	0	0	1,371,331	-	0	0	1,371,331	-	0	0	1,500,000	-	0	0	2,400,000	-
21		Color Doppler RADIOLOGY	1	0	1	3,698,310	3,698,310	0	1	3,698,310	3,698,310	0	1	4,500,000	4,500,000	0	1	5,500,000	5,500,000
22	CCU	ICU MONITOR	2	0	2	301,665	603,330	0	2	301,665	603,330	0	2	900,000	1,800,000	0	2	1,250,000	2,500,000
23		Temporary pace maker	0	0	0	315,000	-	0	0	315,000	-	0	0	315,000	-	0	0	550,000	-
24		Defibrillator	1	0	1	299,153	299,153	0	1	299,153	299,153	0	1	650,000	650,000	0	1	800,000	800,000
25		ECG Machine Three Channel	2	0	2	169,785	339,570	0	2	169,785	339,570	0	2	169,785	339,570	0	2	300,000	600,000
26		ETT Machine	0	0	0	2,021,838	-	0	0	2,021,838	-	0	0	2,200,000	-	0	0	3,000,000	-
27		Color dopler RADIOLOGY	0	0	0	4,681,790	-	0	0	4,681,790	-	0	0	4,800,000	-	0	0	6,000,000	-
28	Suction Pump	2	0	2	259,350	518,700	0	2	259,350	518,700	0	2	275,000	550,000	0	2	300,000	600,000	
29	Blood Bank	Blood Cabinet	1	1	0	690,539	-	1	0	690,539	-	1	0	700,000	-	1	0	1,500,000	-
30		Centrifuge Machine	2	1	1	149,336	149,336	1	1	149,336	149,336	1	1	250,000	250,000	1	1	400,000	400,000
31		Slide viewer	1	1	0	42,000	-	1	0	42,000	-	1	0	55,000	-	1	0	55,000	-
32		Clinical Microscope	1	1	0	132,825	-	1	0	132,825	-	1	0	180,000	-	1	0	250,000	-
33	Dialysis Unit (10 beds)	Computerized Hemo Dialysis Machine	5	0	5	1,050,000	5,250,000	0	5	1,050,000	5,250,000	0	5	1,600,000	8,000,000	0	5	3,200,000	16,000,000
34	Nursery	Baby Cot	10	8	2	14,669	29,337	8	2	14,669	29,337	8	2	16,000	32,000	8	2	16,000	32,000
35		Phototherapy Unit	2	1	1	130,200	130,200	1	1	130,200	130,200	1	1	655,000	655,000	1	1	850,000	850,000
36		Infant Warmer	2	2	0	335,638	-	2	0	335,638	-	2	0	985,000	-	2	0	1,050,000	-
37		Pulse Oximeter	6	2	4	104,500	418,000	2	4	104,500	418,000	2	4	160,000	640,000	2	4	225,000	900,000
38		Infant Incubator	2	2	0	858,932	-	2	0	858,932	-	2	0	900,000	-	2	0	1,750,000	-
39		Suction Pump	1	1	1	259,350	259,350	1	1	259,350	259,350	1	1	275,000	275,000	1	1	300,000	300,000
40	Hospital Grade Nebulizer Heavy Duty	2	4	0	125,265	-	4	0	125,265	-	4	0	215,000	-	4	0	300,000	-	
41	O.T (04)	Anesthesia Machine with Ventilator	1	3	0	2,509,554	-	3	0	2,509,554	-	3	0	3,000,000	-	3	0	7,000,000	-
42		BED SIDE PATIENT MONITOR	2	2	0	441,000	-	2	0	441,000	-	2	0	550,000	-	2	0	1,200,000	-
43		Defibrillator	2	0	2	308,713	617,425	0	2	308,713	617,425	0	2	650,000	1,300,000	0	2	800,000	1,600,000
44		Electrosurgical Unit	1	2	0	507,530	-	2	0	507,530	-	2	0	700,000	-	2	0	900,000	-
45		Operation Table	1	3	0	1,426,215	-	3	0	1,426,215	-	3	0	2,000,000	-	3	0	2,500,000	-
46		Ceiling Operating Light	1	4	0	413,013	-	4	0	413,013	-	4	0	800,000	-	4	0	950,000	-
47		STEAM STERILIZER	1	2	0	3,465,000	-	2	0	3,465,000	-	2	0	4,000,000	-	2	0	7,800,000	-
48		Suction Pump	2	2	2	259,350	518,700	2	2	259,350	518,700	2	2	275,000	550,000	2	2	300,000	600,000
49		Resuscitation trolley With Crash Cart	2	0	2	244,733	489,466	0	2	244,733	489,466	0	2	400,000	800,000	0	2	600,000	1,200,000
50		mayo table	4	0	4	21,000	84,000	0	4	21,000	84,000	0	4	23,000	92,000	0	4	23,000	92,000
51	MOBILE OPERATING LIGHT	1	4	0	304,220	-	4	0	304,220	-	4	0	400,000	-	4	0	900,000	-	
52	Orthopedic	Operation Table	0	0	0	1,426,215	-	0	0	1,426,215	-	0	0	2,000,000	-	0	0	5,000,000	-
53		ORTHOPEDIC DRILL	0	0	0	1,108,740	-	0	0	1,108,740	-	0	0	1,500,000	-	0	0	4,000,000	-
54		Plaster Cutting Pneumatic	1	0	1	276,250	276,250	0	1	276,250	276,250	0	1	450,000	450,000	0	1	1,500,000	1,500,000
55		Pneumatic Tourniquets	0	0	0	262,500	-	0	0	262,500	-	0	0	262,500	-	0	0	300,000	-
56		Orthopedic Instruments	0	0	0	432,623	-	0	0	432,623	-	0	0	550,000	-	0	0	550,000	-

Medical Equipment

Sr. No.	Area	Name of Equipment	Yard Stick	Original				1st Revised				2nd Revised				3rd Revised			
				Available Quantity	Required Quantity	Cost per Unit	Total Cost	Available Quantity	Required Quantity	Cost per Unit	Total Cost	Available Quantity	Required Quantity	Cost per Unit	Total Cost	Available Quantity	Required Quantity	Cost per Unit	Total Cost
57	Gynea (20 beds)	Portable/Mobile Ultrasound	1	2	0	1,418,958	-	2	0	1,418,958	-	2	0	1,500,000	-	2	0	2,400,000	-
58		Autoclave	1	1	0	441,000	-	1	0	441,000	-	1	0	550,000	-	1	0	850,000	-
59		Delivery Set	10	2	8	31,500	252,000	2	8	31,500	252,000	2	8	40,000	320,000	2	8	65,000	520,000
60		Delivery Table	2	3	0	47,250	-	3	0	47,250	-	3	0	47,250	-	3	0	55,000	-
61		BED SIDE PATIENT MONITOR	2	0	2	294,000	588,000	0	2	294,000	588,000	0	2	550,000	1,100,000	0	2	1,200,000	2,400,000
62		D & C Set	2	2	0	34,650	-	2	0	34,650	-	2	0	40,000	-	2	0	60,000	-
63		Vacume Extractor	1	1	0	259,350	-	1	0	259,350	-	1	0	300,000	-	1	0	350,000	-
64		CTG Machine	1	1	0	628,049	-	1	0	628,049	-	1	0	725,000	-	1	0	900,000	-
65		ECG Machine Three Channel	1	0	1	169,785	169,785	0	1	169,785	169,785	0	1	180,000	180,000	0	1	300,000	300,000
66		Portable O.T Light	2	3	0	304,220	-	3	0	304,220	-	3	0	400,000	-	3	0	900,000	-
67		Baby Cot	2	4	0	14,669	-	4	0	14,669	-	4	0	16,000	-	4	0	16,000	-
68		Delivery trolley	2	1	1	47,250	47,250	1	1	47,250	47,250	1	1	47,250	47,250	1	1	47,250	47,250
69		Desktop Fetal Heart Rate Detector	1	2	0	144,375	-	2	0	144,375	-	2	0	175,000	-	2	0	200,000	-
70		Steam Sterilizer	0	1	0	3,355,849	-	1	0	3,355,849	-	1	0	4,000,000	-	1	0	7,800,000	-
71	Operation Table	0	2	0	1,426,215	-	2	0	1,426,215	-	2	0	2,000,000	-	2	0	2,500,000	-	
72	Surgical Emergency (10 beds)	MOBILE OPERATING LIGHT	0	1	0	285,466	-	1	0	285,466	-	1	0	400,000	-	1	0	900,000	-
73		Suction Pump	0	4	0	259,350	-	4	0	259,350	-	4	0	275,000	-	4	0	300,000	-
74		Laryngoscope	0	3	0	9,744	-	3	0	9,744	-	3	0	12,000	-	3	0	20,000	-
75		Set of Surgical Instruments	0	17	0	141,750	-	17	0	141,750	-	17	0	160,000	-	17	0	220,000	-
76	Others	Stretcher	10	0	10	68,250	682,500	0	10	68,250	682,500	0	10	69,300	693,000	0	10	69,300	693,000
77		wheel chair	10	0	10	31,500	315,000	0	10	31,500	315,000	0	10	35,000	350,000	0	10	35,000	350,000
78		foot support	6	0	6	4,200	25,200	0	6	4,200	25,200	0	6	4,500	27,000	0	6	5,148	30,888
79		Resuscitation trolley With Crash Cart	5	2	3	237,618	712,854	2	3	237,618	712,854	2	3	400,000	1,200,000	2	3	600,000	1,800,000
80		BP Appratus	15	42	0	15,750	-	42	0	15,750	-	42	0	16,000	-	42	0	16,000	-
81		Ventilator	0	0	0	2,195,080	-	0	0	2,195,080	-	0	0	3,500,000	-	0	0	5,500,000	-
82		CPAP	1	0	1	1,098,510	1,098,510	0	1	1,098,510	1,098,510	0	1	2,100,000	2,100,000	0	1	2,800,000	2,800,000
83		X-RAY PROCESSOR	1	0	1	858,440	858,440	0	1	858,440	858,440	0	1	925,000	925,000	0	1	1,200,000	1,200,000
84		Hand wash Scrub Double Bay	2	0	2	94,500	189,000	0	2	94,500	189,000	0	2	100,000	200,000	0	2	140,000	280,000
85		Image Intensifier	0	0	0	4,667,460	-	0	0	4,667,460	-	0	0	4,667,460	-	0	0	12,000,000	-
86	Central Medical Gass Pipe Line System	7	0	7	850,000	5,950,000	0	7	850,000	5,950,000	0	7	-	-	0	7	-	-	
87	ICU	Motorized Patient bed with bed side, Mattress, IV stand, Attendant Bench	4	0	4	210,000	840,000	0	4	210,000	840,000	0	4	400,000	1,600,000	0	4	600,000	2,400,000
88		Sphygmomanometer wall mtd	4	0	4	15,750	63,000	0	4	15,750	63,000	0	4	30,000	120,000	0	4	35,000	140,000
89		Resuscitation trolley With Crash Cart	2	0	2	244,733	489,466	0	2	244,733	489,466	0	2	400,000	800,000	0	2	600,000	1,200,000
90		Defibrillator	1	0	1	299,153	299,153	0	1	299,153	299,153	0	1	650,000	650,000	0	1	800,000	800,000
91		Defibrillator with Monitor	0	0	0	330,750	-	0	0	330,750	-	0	0	650,000	-	0	0	800,000	-
92		ECG Machine Three Channel	0	0	0	169,785	-	0	0	169,785	-	0	0	180,000	-	0	0	300,000	-
93		Syringe pump	1	0	1	108,780	108,780	0	1	108,780	108,780	0	1	125,000	125,000	0	1	200,000	200,000
94		Suction Pump	0	0	0	259,350	-	0	0	259,350	-	0	0	275,000	-	0	0	300,000	-
95		ICU Monitor	0	0	0	298,200	-	0	0	298,200	-	0	0	900,000	-	0	0	1,250,000	-
96		Instrument Trolley	1	0	1	55,000	55,000	0	1	55,000	55,000	0	1	55,000	55,000	0	1	55,000	55,000
97		Ward instruments	0	0	0	-	-	0	0	-	-	0	0	-	-	0	0	-	-
98		Ventilator intensive care	2	0	2	1,600,000	3,200,000	0	2	1,600,000	3,200,000	0	2	3,500,000	7,000,000	0	2	5,500,000	11,000,000
99		CPAP with humidifier	0	0	0	1,098,510	-	0	0	1,098,510	-	0	0	2,100,000	-	0	0	2,800,000	-
100		DELIVERY TROLLEY STAINLESS STEEL	1	0	1	23,835	23,835	0	1	23,835	23,835	0	1	47,250	47,250	0	1	47,250	47,250
101	Ambu-Bag, adult	4	0	4	17,325	69,300	0	4	17,325	69,300	0	4	19,000	76,000	0	4	19,000	76,000	
102	Ambu-Bag, paedrs	4	0	4	17,325	69,300	0	4	17,325	69,300	0	4	19,000	76,000	0	4	19,000	76,000	
103	MORTUERY	TWO BODY REFRIGERATOR WITH CASTERS 220v 50Hz Along with Atopsy Table & Lifter Trolley	1	0	1	2,470,546	2,470,546	0	1	2,470,546	2,470,546	0	1	3,000,000	3,000,000	0	1	3,500,000	3,500,000
104	Dental Unit	Dental Unit	2	0	2	2,190,000	4,380,000	0	2	2,190,000	4,380,000	0	2	2,820,000	5,640,000	0	2	2,820,000	5,640,000
105		Autoclave	1	0	1	441,000	441,000	0	1	441,000	441,000	0	1	550,000	550,000	0	1	850,000	850,000
106		Dental X-RAY Machine	1	0	1	282,975	282,975	0	1	282,975	282,975	0	1	350,000	350,000	0	1	525,000	525,000
107		Digital Intra Oral Camera	0	0	0	94,500	-	0	0	94,500	-	0	0	150,000	-	0	0	600,000	-
108		DENTAL CAUTERY	0	0	0	84,000	-	0	0	84,000	-	0	0	160,000	-	0	0	900,000	-
109		Ultrasonic scaling	1	0	1	120,750	120,750	0	1	120,750	120,750	0	1	175,000	175,000	0	1	300,000	300,000
110		Curing lights	1	0	1	52,500	52,500	0	1	52,500	52,500	0	1	95,000	95,000	0	1	150,000	150,000
111		Endo motor system	1	0	1	199,601	199,601	0	1	199,601	199,601	0	1	265,000	265,000	0	1	500,000	500,000

Medical Equipment

Sr. No.	Area	Name of Equipment	Yard Stick	Original				1st Revised				2nd Revised				3rd Revised			
				Available Quantity	Required Quantity	Cost per Unit	Total Cost	Available Quantity	Required Quantity	Cost per Unit	Total Cost	Available Quantity	Required Quantity	Cost per Unit	Total Cost	Available Quantity	Required Quantity	Cost per Unit	Total Cost
112		Dental cabinet	0	0	0	42,000	-	0	0	42,000	-	0	0	70,000	-	0	0	160,000	-
113		Dental examination/surgical instrument sets	4	0	4	157,500	630,000	0	4	157,500	630,000	0	4	175,000	700,000	0	4	175,000	700,000
114		Shortwave diathermy	1	0	1	844,562	844,562	0	1	844,562	844,562	0	1	1,500,000	1,500,000	0	1	2,750,000	2,750,000
115		Infrared Radiation	1	0	1	142,916	142,916	0	1	142,916	142,916	0	1	315,222	315,222	0	1	526,500	526,500
116		TENS(Transcutaneous Electrical Nerve Stimulation)	1	0	1	132,577	132,577	0	1	132,577	132,577	0	1	275,000	275,000	0	1	585,000	585,000
117		Treatment couch	4	0	4	10,080	40,320	0	4	10,080	40,320	0	4	75,000	300,000	0	4	760,500	3,042,000
118		A. Electrical Heating Pads	3	0	3	6,300	18,900	0	3	6,300	18,900	0	3	20,000	60,000	0	3	117,000	351,000
119		B. Hot pack unite	1	0	1	131,782	131,782	0	1	131,782	131,782	0	1	253,485	253,485	0	1	1,053,000	1,053,000
120		C. Paraffin bath	1	0	1	154,082	154,082	0	1	154,082	154,082	0	1	308,071	308,071	0	1	819,000	819,000
121	Physiotherapy unit	Therapeutic ULTRASOUND unit	1	0	1	141,748	141,748	0	1	141,748	141,748	0	1	275,000	275,000	0	1	819,000	819,000
122		Treadmill	1	0	1	335,111	335,111	0	1	335,111	335,111	0	1	950,000	950,000	0	1	1,404,000	1,404,000
123		Mats	1	0	1	75,817	75,817	0	1	75,817	75,817	0	1	150,000	150,000	0	1	292,500	292,500
124		Quadriceps Bench	1	0	1	189,164	189,164	0	1	189,164	189,164	0	1	425,000	425,000	0	1	750,000	750,000
125		Ergometer Cycling	1	0	1	66,087	66,087	0	1	66,087	66,087	0	1	175,000	175,000	0	1	409,500	409,500
126		Mirror	1	0	1	24,640	24,640	0	1	24,640	24,640	0	1	45,000	45,000	0	1	400,000	400,000
127		Floor Mounted Parallel Bars	1	0	1	87,821	87,821	0	1	87,821	87,821	0	1	150,000	150,000	0	1	590,000	590,000
128		Pully System	1	0	1	41,826	41,826	0	1	41,826	41,826	0	1	128,594	128,594	0	1	409,500	409,500
129		Trolleys	4	0	4	2,520	10,080	0	4	2,520	10,080	0	4	35,000	140,000	0	4	50,000	200,000
130		Stool(Steel)	4	0	4	2,520	10,080	0	4	2,520	10,080	0	4	7,000	28,000	0	4	10,000	40,000
131	Beds	Fowler beds with Mattress	60	0	60	70,000	4,200,000	0	60	70,000	4,200,000	0	60	110,000	6,600,000	0	60	150,000	9,000,000
		Total				50,361,087				50,361,087				68,906,441				109,275,388	
						50,361				50,361				68,906				109,275	

Electricity

Sr. No.	Item Name	Original			1st Revised			2nd Revised			3rd Revised		
		Quantity	Per Unit Cost	Total Cost	Quantity	Per Unit Cost	Total Cost	Quantity	Per Unit Cost	Total Cost	Quantity	Per Unit Cost	Total Cost
1	Transformers (200 KVA)	1	600,000	600,000	1	600,000	600,000	1	9,500,000	9,500,000	1	9,500,000	9,500,000
2	Transformers (100 KVA)	0	450,000	-	0	450,000	-	0	450,000	-	0	450,000	-
3	Generator (200 KVA)	1	4,000,000	4,000,000	1	4,000,000	4,000,000	1	4,000,000	4,000,000	1	4,000,000	4,000,000
4	Generator (100 KVA)	0	2,300,000	-	0	2,300,000	-	0	2,300,000	-	1	4,500,000	4,500,000
5	2 Ton air conditioners (split)	46	55,500	2,553,000	46	55,500	2,553,000	46	55,500	2,553,000	46	55,500	2,553,000
6	2 Ton air conditioners (Cabinet)	65	78,000	5,070,000	65	78,000	5,070,000	65	78,000	5,070,000	65	78,000	5,070,000
7	4 Ton air conditioners (Cabinet)	22	120,000	2,640,000	22	120,000	2,640,000	22	120,000	2,640,000	22	120,000	2,640,000
8	Ceiling Fans 56"	20	3,090	61,800	20	3,090	61,800	20	3,090	61,800	20	3,090	61,800
10	Bracket Fans 18"	72	3,280	236,160	72	3,280	236,160	72	3,280	236,160	72	3,280	236,160
9	Exhaust Fans	36	3,000	108,000	36	3,000	108,000	36	3,000	108,000	36	3,000	108,000
11	Dual Connection of Electricity / Express Line	1	5,000,000	5,000,000	1	5,000,000	5,000,000	1	5,000,000	5,000,000	1	5,000,000	5,000,000
	Total			20,268,960			20,268,960			29,168,960			33,668,960
				20.269			20.269			29.169			33.669

IT & QMS & Surveillance

Sr. No.	Item Name	Original			1st Revised			2nd Revised			3rd Revised		
		Quantity	Per Unit Cost	Total Cost	Quantity	Per Unit Cost	Total Cost	Quantity	Per Unit Cost	Total Cost	Quantity	Per Unit Cost	Total Cost
1	Desktop, UPS, LED	30	75,000	2,250,000	30	75,000	2,250,000	30	130,000	3,900,000	30	216,000	6,480,000
2	MS Windows License	30	20,000	600,000	30	20,000	600,000	30	20,000	600,000	30	20,000	600,000
3	Scanner Flatbed with ADF	3	90,000	270,000	3	90,000	270,000	3	150,000	450,000	3	150,000	450,000
4	Heavy duty Printer	7	40,000	280,000	7	40,000	280,000	7	50,000	350,000	7	110,000	770,000
5	Multimedia Projector with Screen	1	100,000	100,000	1	100,000	100,000	1	100,000	100,000	1	100,000	100,000
6	Tabs	4	50,000	200,000	4	50,000	200,000	4	50,000	200,000	4	50,000	200,000
7	Laptop	1	100,000	100,000	1	100,000	100,000	1	100,000	100,000	1	100,000	100,000
8	MS Windows License	1	20,000	20,000	1	20,000	20,000	1	20,000	20,000	1	20,000	20,000
9	QMS System	1	3,700,000	3,700,000	1	3,700,000	3,700,000	1	4,000,000	4,000,000	1	4,000,000	4,000,000
10	Networking	1	995,000	995,000	1	995,000	995,000	1	995,000	995,000	1	1,200,000	1,200,000
11	Monitoring & Surveillance (CCTV)	1	5,000,000	5,000,000	1	5,000,000	5,000,000	1	5,000,000	5,000,000	1	5,000,000	5,000,000
12	Public Address System	1	1,000,000	1,000,000	1	1,000,000	1,000,000	1	1,000,000	1,000,000	1	1,200,000	1,200,000
	Total			14,515,000			14,515,000			16,715,000			20,120,000
				14.515			14.515			16.715			20.120

Furniture and Fixtures

Sr. No.	Item Name	Original			1st Revised			2nd Revised			3rd Revised		
		Quantity	Unit Price	Total	Quantity	Unit Price	Total	Quantity	Unit Price	Total	Quantity	Unit Price	Total
1	Benches (internal)	60	30,000	1,800,000	60	30,000	1,800,000	60	30,000	1,800,000	60	40000	2,400,000
2	Benches (external)	10	10,000	100,000	10	10,000	100,000	10	10,000	100,000	10	40000	400,000
3	Electric Water Cooler	8	45,000	360,000	8	45,000	360,000	8	45,000	360,000	8	60000	480,000
4	Doctors rooms Furniture	30	70,000	2,100,000	30	70,000	2,100,000	30	70,000	2,100,000	30	125000	3,750,000
5	Examination couches	10	35,000	350,000	10	35,000	350,000	10	35,000	350,000	10	35000	350,000
6	Fire Blanket	5	2,500	12,500	5	2,500	12,500	5	2,500	12,500	5	3000	15,000
7	Fire Extinguisher (Water Based)	30	8,000	240,000	30	8,000	240,000	30	8,000	240,000	30	2500	75,000
8	Acrylic Board	150	2,200	330,000	150	2,200	330,000	150	2,200	330,000	150	2000	300,000
9	Rostrum	2	18,000	36,000	2	18,000	36,000	2	18,000	36,000	2	20000	40,000
10	Blinds for windows	6000	150	900,000	6000	150	900,000	6000	150	900,000	6000	200	1,200,000
11	Paintings	100	6,000	600,000	100	6,000	600,000	100	6,000	600,000	100	5000	500,000
12	Waste Bin Sets (3 bin)	40	6,000	240,000	40	6,000	240,000	40	6,000	240,000	40	9000	360,000
13	Printing			1,000,000			1,000,000			1,000,000			1,000,000
	Machinery and Equipment's												
14	Refrigerator(Domestic) front glass double door	2	160,000	320,000	2	160,000	320,000	2	160,000	320,000	2	150000	300,000
15	Refrigerator glass single door	5	80,000	400,000	5	80,000	400,000	5	80,000	400,000	5	90000	450,000
16	Refrigerator 16 cft	5	36,000	180,000	5	36,000	180,000	5	36,000	180,000	5	50000	250,000
17	Air Curtain On Door	5	50,000	250,000	5	50,000	250,000	5	50,000	250,000	5	75000	375,000
18	Washing machines for pantries	3	13,000	39,000	3	13,000	39,000	3	13,000	39,000	3	11000	33,000
19	Gas Burner for pantries	10	4,800	48,000	10	4,800	48,000	10	4,800	48,000	10	80000	800,000
20	Fire Extinguishers DCP	30	4,800	144,000	30	4,800	144,000	30	4,800	144,000	30	6500	195,000
21	LED TV	15	55,000	825,000	15	55,000	825,000	15	55,000	825,000	15	140000	2,100,000
22	Industrial Exhaust	5	50,000	250,000	5	50,000	250,000	5	50,000	250,000	5	60000	300,000
23	Acrylic Display Board	4	20,000	80,000	4	20,000	80,000	4	20,000	80,000	4	20000	80,000
	Laundry & Washing												
24	Bed Sheets and pillow covers	300	1,250	375,000	300	1,250	375,000	300	1,250	375,000	300	2500	750,000
25	Pillows	150	400	60,000	150	400	60,000	150	400	60,000	150	500	75,000
26	Blankets with covers	100	5,000	500,000	100	5,000	500,000	100	5,000	500,000	100	4000	400,000
	Medicine Store												
27	Medicine (Iron Racks) 8x6x2 (Required)	20	50,000	1,000,000	20	50,000	1,000,000	20	50,000	1,000,000	20	60000	1,200,000
28	Moveable Iron Stairs (Required)	2	15,000	30,000	2	15,000	30,000	2	15,000	30,000	2	20000	40,000
29	Lifters (Required)	2	37,000	74,000	2	37,000	74,000	2	37,000	74,000	2	35000	70,000
30	Pallets 3x4 (Plastic) (Required)	20	12,000	240,000	20	12,000	240,000	20	12,000	240,000	20	10000	200,000
31	Dehumidifier (Required)	1	100,000	100,000	1	100,000	100,000	1	100,000	100,000	1	125000	125,000
32	Insect Killer (Required)	25	8,000	200,000	25	8,000	200,000	25	8,000	200,000	25	6500	162,500
33	Thermometer (Required)	20	16,000	320,000	20	16,000	320,000	20	16,000	320,000	20	600	12,000
	Total			13,503,500			13,503,500			13,503,500			18,787,500
				13.504			13.504			13.504			18.788

Signage and plaques

Sr No	Type	Kinds of Sign Boards	Original			1st Revised			2nd Revised			3rd Revised		
			Quantity	Rates	Cost	Quantity	Rates	Cost	Quantity	Rates	Cost	Quantity	Rates	Cost
		External Sign Boards												
1	A1	External Platform/Road Signage (Circular)	7	10,119	70,833	7	10,119	70,833	7	13,951	97,657	7	13,951	97,657
2	A2	External Platform/Road Signage (Triangular)	7	9,257	64,799	7	9,257	64,799	7	12,762	89,337	7	12,762	89,337
3	B1	Main Directional Board	1	112,496	112,496	1	112,496	112,496	1	155,107	155,107	1	155,107	155,107
4	C1	Directional Board (Single Sheet)	12	14,454	173,448	12	14,454	173,448	12	19,929	239,148	12	19,929	239,148
5	C2	Directional Board (Two Sheets)	1	22,495	22,495	1	22,495	22,495	1	31,016	31,016	1	31,016	31,016
6	C3	Directional Board (Three Sheets)	1	30,158	30,158	1	30,158	30,158	1	41,581	41,581	1	41,581	41,581
7	C4	Directional Board (Four Sheets)	1	37,243	37,243	1	37,243	37,243	1	51,351	51,351	1	51,351	51,351
8	C5	Directional Board (Five Sheets)	1	45,228	45,228	1	45,228	45,228	1	62,360	62,360	1	62,360	62,360
9	C6	Directional Board (Six Sheets)	1	52,808	52,808	1	52,808	52,808	1	72,810	72,810	1	72,810	72,810
10	C7	Additional Panel (For Fixation on existing Foundation & Posts)	3	7,944	23,832	3	7,944	23,832	3	10,952	32,857	3	10,952	32,857
11	D1	Departmental Signage on Building	7	47,206	330,442	7	47,206	330,442	7	65,087	455,612	7	65,087	455,612
12	E1	External Map Boards	3	41,187	123,561	3	41,187	123,561	3	56,788	170,365	3	56,788	170,365
		Internal Signage	0	-	-	0	-	-	0	-	-	0	-	-
1	F1	Internal Hanging Signage (Main Entrance)	5	90,873	454,365	5	90,873	454,365	5	125,294	626,472	5	125,294	626,472
2	F2	Internal Hanging Signage (Main Entrance 2)	5	69,188	345,940	5	69,188	345,940	5	95,396	476,980	5	95,396	476,980
3	F3	Internal Hanging Signage (Corridor)	5	51,241	256,205	5	51,241	256,205	5	70,651	353,255	5	70,651	353,255
4	F4	Internal Hanging Signage (Corridor 2)	5	51,835	259,175	5	51,835	259,175	5	71,470	357,350	5	71,470	357,350
5	G1	Internal Department Signage on wall	7	13,107	91,749	7	13,107	91,749	7	18,071	126,498	7	18,071	126,498
6	H1	Specialist Name Plaques fixed on wall	20	3,767	75,340	20	3,767	75,340	20	5,194	103,880	20	5,194	103,880
7	J1	Room Name Plaques and Numbers fixed on wall	110	866	95,260	110	866	95,260	110	1,194	131,362	110	1,194	131,362
8	K1	Internal Wall Signage	110	1,423	156,530	110	1,423	156,530	110	1,961	215,754	110	1,961	215,754
9	L1	Room Numbers Fixed on Wall	60	3,611	216,660	60	3,611	216,660	60	4,978	298,704	60	4,978	298,704
10	M1	Advance Fire Exit Sign	10	1,837	18,370	10	1,837	18,370	10	2,534	25,340	10	2,534	25,340
11	M2	Fire Exit Sign Mounted Above the Door	10	1,271	12,710	10	1,271	12,710	10	1,753	17,528	10	1,753	17,528
12	N1	Fire Safety/Equipment Signage	20	2,434	48,680	20	2,434	48,680	20	3,357	67,144	20	3,357	67,144
13	P1	Floor Map Board	5	21,088	105,440	5	21,088	105,440	5	29,075	145,376	5	29,075	145,376
14	Q1	Caution Signage	25	2,173	54,325	25	2,173	54,325	25	2,996	74,900	25	2,996	74,900
15	Q2	Caution Signage	5	653	3,265	5	653	3,265	5	902	4,508	5	902	4,508
16	Q3	Caution Signage	10	1,143	11,430	10	1,143	11,430	10	1,576	15,764	10	1,576	15,764
17	Q4	Caution Signage	15	888	13,320	15	888	13,320	15	1,225	18,375	15	1,225	18,375
		Total			3,306,107			3,306,107			4,558,390			4,558,390
		Designing and Site Supervision			99,183			99,183			136,752			136,752
		Grand Total			3,405,290			3,405,290			4,695,142			4,695,142
					3.405			3.405			4.695			4.695

DAY CARE CENTER

Yard Stick as per Women Development Department

Sr. No.	ITEMS	Original			1st Revised			2nd Revised			3rd Revised		
		Yard Stick (DCC of 25 Kids)	Unit Cost	Total	Yard Stick (DCC of 25 Kids)	Unit Cost	Total	Yard Stick (DCC of 25 Kids)	Unit Cost	Total	Yard Stick (DCC of 25 Kids)	Unit Cost	Total
1	Cylinder Block	1	3,000	3,000	1	3,000	3,000	1	3,000	3,000	1	3,000	3,000
2	Geometrical Cabinet (36 pcs)	1	4,000	4,000	1	4,000	4,000	1	4,000	4,000	1	4,000	4,000
3	Geometrical Solids (10 pcs)	1	2,200	2,200	1	2,200	2,200	1	2,200	2,200	1	2,200	2,200
4	Base for Geometrical Solids (14 pcs)	1	2,000	2,000	1	2,000	2,000	1	2,000	2,000	1	2,000	2,000
5	Constructive Triangles (4 box)	1	400	400	1	400	400	1	400	400	1	400	400
6	Metal Insets (10 - shape)	1	1,000	1,000	1	1,000	1,000	1	1,000	1,000	1	1,000	1,000
7	Stand for metal insets	1	2,000	2,000	1	2,000	2,000	1	2,000	2,000	1	2,000	2,000
8	Paper Board for metal insets (10 Boards)	1	5,000	5,000	1	5,000	5,000	1	5,000	5,000	1	5,000	5,000
9	Sandpaper Alphabets (English)	3	2,000	6,000	3	2,000	6,000	3	2,000	6,000	3	2,000	6,000
10	Sandpaper Alphabets (Urdu)	3	3,500	10,500	3	3,500	10,500	3	3,500	10,500	3	3,500	10,500
11	Sandpaper Number	3	2,000	6,000	3	2,000	6,000	3	2,000	6,000	3	2,000	6,000
12	Hammer Case	2	1,000	2,000	2	1,000	2,000	2	1,000	2,000	2	1,000	2,000
13	Soft Reading Book	15	200	3,000	15	200	3,000	15	200	3,000	15	200	3,000
14	Shape Sorting Case	2	500	1,000	2	500	1,000	2	500	1,000	2	500	1,000
15	Transport Set (Model)	2	700	1,400	2	700	1,400	2	700	1,400	2	700	1,400
16	Model Puzzles (S)	7	300	2,100	7	300	2,100	7	300	2,100	7	300	2,100
17	Model Puzzles (B)	7	500	3,500	7	500	3,500	7	500	3,500	7	500	3,500
18	Storybook	20	100	2,000	20	100	2,000	20	100	2,000	20	100	2,000
19	Information Book (Large)	20	350	7,000	20	350	7,000	20	350	7,000	20	350	7,000
20	Basket (L)	10	1,000	10,000	10	1,000	10,000	10	1,000	10,000	10	1,000	10,000
21	Basket (S)	10	600	6,000	10	600	6,000	10	600	6,000	10	600	6,000
22	Color table Box	2	1,000	2,000	2	1,000	2,000	2	1,000	2,000	2	1,000	2,000
23	ABC Block	4	500	2,000	4	500	2,000	4	500	2,000	4	500	2,000
24	Number Block	4	500	2,000	4	500	2,000	4	500	2,000	4	500	2,000
25	Color Pensils (Large)	5	450	2,250	5	450	2,250	5	450	2,250	5	450	2,250
26	Color Crayons (Large)	5	300	1,500	5	300	1,500	5	300	1,500	5	300	1,500
27	Marker Color (Board and Permanent)	15	395	5,925	15	395	5,925	15	395	5,925	15	395	5,925
28	Fruits Basket (Model Set)	2	1,000	2,000	2	1,000	2,000	2	1,000	2,000	2	1,000	2,000
29	Vegetables Basket (Model Set)	2	1,000	2,000	2	1,000	2,000	2	1,000	2,000	2	1,000	2,000
30	Animal Sets	2	600	1,200	2	600	1,200	2	600	1,200	2	600	1,200
31	Insects sets	2	400	800	2	400	800	2	400	800	2	400	800
32	Shape Sorting House	2	1,500	3,000	2	1,500	3,000	2	1,500	3,000	2	1,500	3,000
33	Flash card (Small)	10	120	1,200	10	120	1,200	10	120	1,200	10	120	1,200
34	Flash card (Big)	10	325	3,250	10	325	3,250	10	325	3,250	10	325	3,250
35	Sand Play	2	1,000	4,000	2	1,000	4,000	2	1,000	4,000	2	1,000	4,000
36	Gym Play	2	2,000	3,000	2	2,000	3,000	2	2,000	3,000	2	2,000	3,000
37	Straight Mats	20	1,500	40,000	20	1,500	40,000	20	1,500	40,000	20	1,500	40,000
38	Folding Mats	20	2,000	6,000	20	2,000	6,000	20	2,000	6,000	20	2,000	6,000
39	Diaper Changing Mats	3	300	1,500	3	300	1,500	3	300	1,500	3	300	1,500
40	Cube Cushion	2	500	1,000	2	500	1,000	2	500	1,000	2	500	1,000
41	Square Cushion	2	500	600	2	500	600	2	500	600	2	500	600
42	Baby Mirror	3	300	2,400	3	300	2,400	3	300	2,400	3	300	2,400
43	Pink Tower With Stand	1	800	500	1	800	500	1	800	500	1	800	500
44	Dressing Frames	10	500	8,000	10	500	8,000	10	500	8,000	10	500	8,000
45	Monkey Stuffed	2	800	2,400	2	800	2,400	2	800	2,400	2	800	2,400
46	Lion Stuffed	2	1,200	3,400	2	1,200	3,400	2	1,200	3,400	2	1,200	3,400
47	Cater Pillar Stuffed	2	1,700	3,000	2	1,700	3,000	2	1,700	3,000	2	1,700	3,000

DAY CARE CENTER

Yard Stick as per Women Development Department

Sr. No.	ITEMS	Original			1st Revised			2nd Revised			3rd Revised		
		Yard Stick (DCC of 25 Kids)	Unit Cost	Total	Yard Stick (DCC of 25 Kids)	Unit Cost	Total	Yard Stick (DCC of 25 Kids)	Unit Cost	Total	Yard Stick (DCC of 25 Kids)	Unit Cost	Total
48	Stuffed toys (Animal shaped i.e. Moneky, lion, caterpillar etc)	6	1,500	9,000	6	1,500	9,000	6	1,500	9,000	6	1,500	9,000
49	Long Roads with Stands	1	1,500	1,500	1	1,500	1,500	1	1,500	1,500	1	1,500	1,500
50	Number Rods	1	500	500	1	500	500	1	500	500	1	500	500
51	Stand Number Rods	1	800	800	1	800	800	1	800	800	1	800	800

DAY CARE CENTER

Yard Stick as per Women Development Department

Sr. No.	ITEMS	Original			1st Revised			2nd Revised			3rd Revised		
		Yard Stick (DCC of 25 Kids)	Unit Cost	Total	Yard Stick (DCC of 25 Kids)	Unit Cost	Total	Yard Stick (DCC of 25 Kids)	Unit Cost	Total	Yard Stick (DCC of 25 Kids)	Unit Cost	Total
52	Soft toys	2	700	1,400	2	700	1,400	2	700	1,400	2	700	1,400
53	Infants Manual Weight Machine	1	1,000	1,000	1	1,000	1,000	1	1,000	1,000	1	1,000	1,000
54	Toddlers Manual Weight Machine	1	1,000	1,000	1	1,000	1,000	1	1,000	1,000	1	1,000	1,000
55	Tri Cycles	4	3,500	14,000	4	3,500	14,000	4	3,500	14,000	4	3,500	14,000
56	Wooden Cots	10	10,000	100,000	10	10,000	100,000	10	10,000	100,000	10	10,000	100,000
57	Mattresses for Cots	10	1,200	12,000	10	1,200	12,000	10	1,200	12,000	10	1,200	12,000
58	Pillows	10	300	3,000	10	300	3,000	10	300	3,000	10	300	3,000
59	Bed Sheets and pillow covers	20	400	8,000	20	400	8,000	20	400	8,000	20	400	8,000
60	Nets	10	600	6,000	10	600	6,000	10	600	6,000	10	600	6,000
61	High Chairs for feeding	15	3,000	45,000	15	3,000	45,000	15	3,000	45,000	15	3,000	45,000
62	Rockers Cum Bouncer	8	2,500	20,000	8	2,500	20,000	8	2,500	20,000	8	2,500	20,000
63	Cot Mobile	10	1,500	15,000	10	1,500	15,000	10	1,500	15,000	10	1,500	15,000
64	Plastic Chairs (Round edges Animal Shapes)	7	600	4,200	7	600	4,200	7	600	4,200	7	600	4,200
65	Multi-Purpose Table	2	3,000	6,000	2	3,000	6,000	2	3,000	6,000	2	3,000	6,000
66	Writing Board	1	500	500	1	500	500	1	500	500	1	500	500
67	Electric Sterilizer	2	5,000	10,000	2	5,000	10,000	2	5,000	10,000	2	5,000	10,000
68	Electric Warmer	2	5,000	10,000	2	5,000	10,000	2	5,000	10,000	2	5,000	10,000
69	Table sets	2	4,000	8,000	2	4,000	8,000	2	4,000	8,000	2	4,000	8,000
70	Rocker	6	3,200	19,200	6	3,200	19,200	6	3,200	19,200	6	3,200	19,200
71	Activity Gym (Infants)	5	2,000	10,000	5	2,000	10,000	5	2,000	10,000	5	2,000	10,000
72	Play Gym	5	2,700	13,500	5	2,700	13,500	5	2,700	13,500	5	2,700	13,500
73	Activity Gym (Toddlers)	5	2,000	10,000	5	2,000	10,000	5	2,000	10,000	5	2,000	10,000
74	Toiler Training Seat	10	3,000	30,000	10	3,000	30,000	10	3,000	30,000	10	3,000	30,000
75	Infant Toys	30	4,000	120,000	30	4,000	120,000	30	4,000	120,000	30	4,000	120,000
76	Bath Toys	15	1,000	15,000	15	1,000	15,000	15	1,000	15,000	15	1,000	15,000
77	Fun Links Teether	15	300	4,500	15	300	4,500	15	300	4,500	15	300	4,500
78	Fun Pal Teether	15	500	7,500	15	500	7,500	15	500	7,500	15	500	7,500
79	Fun Rattle	15	400	6,000	15	400	6,000	15	400	6,000	15	400	6,000
80	Mother feeding Chair	1	3,000	3,000	1	3,000	3,000	1	3,000	3,000	1	3,000	3,000
81	Soft Books (duplication)	20	500	10,000	20	500	10,000	20	500	10,000	20	500	10,000
82	Bottle Brushes	3	300	900	3	300	900	3	300	900	3	300	900
List of others Items i.e. Kitchen, Office, Electric				-			-			-			-
1	Water Dispenser	1	14,000	14,000	1	14,000	14,000	1	14,000	14,000	1	14,000	14,000
2	Microwave Oven	1	12,400	12,400	1	12,400	12,400	1	12,400	12,400	1	12,400	12,400
3	Fridge	1	34,000	34,000	1	34,000	34,000	1	34,000	34,000	1	34,000	34,000
4	Kitchen Accessories / Cutleries etc.	24	200	4,800	24	200	4,800	24	200	4,800	24	200	4,800
5	Sofa Set	1	40,000	40,000	1	40,000	40,000	1	40,000	40,000	1	40,000	40,000
6	Office Table	1	5,000	5,000	1	5,000	5,000	1	5,000	5,000	1	5,000	5,000
7	Office Chairs	5	10,000	50,000	5	10,000	50,000	5	10,000	50,000	5	10,000	50,000
8	Air Conditioner	2	42,000	84,000	2	42,000	84,000	2	42,000	84,000	2	42,000	84,000
9	LCD	1	27,000	27,000	1	27,000	27,000	1	27,000	27,000	1	27,000	27,000
10	DVD player	1	5,000	5,000	1	5,000	5,000	1	5,000	5,000	1	5,000	5,000
11	CCTV Cameras	1	100,000	100,000	1	100,000	100,000	1	100,000	100,000	1	100,000	100,000
12	Fire Alarms	3	5,000	15,000	3	5,000	15,000	3	5,000	15,000	3	5,000	15,000
13	UPS	1	10,000	10,000	1	10,000	10,000	1	10,000	10,000	1	10,000	10,000
14	Vacuum Cleaner	1	7,000	7,000	1	7,000	7,000	1	7,000	7,000	1	7,000	7,000
15	Fire Extinguishers (Large)	2	5,000	10,000	2	5,000	10,000	2	5,000	10,000	2	5,000	10,000
16	Electric Insect Killer	2	7,800	15,600	2	7,800	15,600	2	7,800	15,600	2	7,800	15,600
17	Electric Hand Dryer	1	4,000	4,000	1	4,000	4,000	1	4,000	4,000	1	4,000	4,000

DAY CARE CENTER

Yard Stick as per Women Dvelopment Department

Sr. No.	ITEMS	Original			1st Revised			2nd Revised			3rd Revised		
		Yard Stick (DCC of 25 Kids)	Unit Cost	Total	Yard Stick (DCC of 25 Kids)	Unit Cost	Total	Yard Stick (DCC of 25 Kids)	Unit Cost	Total	Yard Stick (DCC of 25 Kids)	Unit Cost	Total
18	Electric Heater	2	5,000	10,000	2	5,000	10,000	2	5,000	10,000	2	5,000	10,000
19	Ceiling/bracket Fans	4	8,000	32,000	4	8,000	32,000	4	8,000	32,000	4	8,000	32,000
20	Curtains	2	45,000	90,000	2	45,000	90,000	2	45,000	90,000	2	45,000	90,000
21	Carpets	1	100,000	100,000	1	100,000	100,000	1	100,000	100,000	1	100,000	100,000
22	Other miscellaneous items	1	218,675	218,675	1	218,675	218,675	1	218,675	218,675	1	218,675	218,675
	TOTAL			1,600,000			1,600,000			1,600,000			1,600,000
				1.600			1.600			1.600			1.600

Human Resource Model of THQ Hospital

Sr. No.	NAME OF POST	Original				1st Revised				2nd Revised				3rd Revised				
		No. of Employees	Per Month Salary	Per Month Salary for Person	Salary for One Year	No. of Employees	Per Month Salary	Per Month Salary for Person	Salary for One Year	No. of Employees	Per Month Salary	Per Month Salary for Person	Salary for Two Years	No. of Employees	Project Pay Scale	Per Month Salary	Per Month Salary for all Person	Salary for Two Years
1	ADMIN OFFICER	1	60,000	60,000	720,000	1	60,000	60,000	720,000	1	80,000	80,000	1,920,000	1	6	105,000	105,000	3,255,000
2	HUMAN RESOURCE & LEGAL OFFICER	1	60,000	60,000	720,000	1	60,000	60,000	720,000	1	80,000	80,000	1,920,000	1	6	105,000	105,000	3,255,000
3	IT/STATISTICAL OFFICER	1	60,000	60,000	720,000	1	60,000	60,000	720,000	1	80,000	80,000	1,920,000	1	6	105,000	105,000	3,255,000
4	FINANCE, BUDGET & AUDIT OFFICER	1	60,000	60,000	720,000	1	60,000	60,000	720,000	1	80,000	80,000	1,920,000	1	6	105,000	105,000	3,255,000
5	PROCUREMENT OFFICER	1	60,000	60,000	720,000	1	60,000	60,000	720,000	1	80,000	80,000	1,920,000	1	6	105,000	105,000	3,255,000
6	QUALITY ASSURANCE OFFICER	1	60,000	60,000	720,000	1	60,000	60,000	720,000	1	80,000	80,000	1,920,000	1	6	105,000	105,000	3,255,000
7	LOGISTICS OFFICER	1	60,000	60,000	720,000	1	60,000	60,000	720,000	1	80,000	80,000	1,920,000	1	6	105,000	105,000	3,255,000
8	DATA ENTRY OPERAOTOR (DEO)	2	25,000	50,000	600,000	2	25,000	50,000	600,000	2	35,000	70,000	1,680,000	2	3	44,000	88,000	2,728,000
9	ASSISTANT ADMIN OFFICER	2	40,000	80,000	960,000	2	40,000	80,000	960,000	2	50,000	100,000	2,400,000	2	5	70,000	140,000	4,340,000
10	HR FOR QMS and MSDS and Day Care Center																	
11	QMS Supervisor / Information Desk Officer	2	25,000	50,000	600,000	2	25,000	50,000	600,000	2	25,000	50,000	600,000	2		25,000	50,000	600,000
12	Computer Operator	8	20,000	160,000	1,920,000	8	20,000	160,000	1,920,000	8	20,000	160,000	1,920,000	8		20,000	160,000	1,920,000
13	Consultants (MSDS) Implementation & Clinical Audit	1	100,000	100,000	1,200,000	1	100,000	100,000	1,200,000	1	100,000	100,000	1,200,000	1		100,000	100,000	1,200,000
14	Training on MSDS Compliance for Staff of THQ Hospital	1000	4,000	4,000,000	4,000,000	1000	4,000	4,000,000	4,000,000	1000	4,000	4,000,000	4,000,000	1000		4,000	4,000,000	4,000,000
15	Rent for Vehicle				500,000				500,000				500,000				0	500,000
16	Manager Day Care Center	1	45,000	45,000	540,000	1	45,000	45,000	540,000	1	45,000	45,000	540,000	1		45,000	45,000	540,000
17	Montessori Trained Teacher	1	35,000	35,000	420,000	1	35,000	35,000	420,000	1	35,000	35,000	420,000	1		35,000	35,000	420,000
18	Attendant / Care Giver	4	25,000	100,000	1,200,000	4	25,000	100,000	1,200,000	4	25,000	100,000	1,200,000	4		25,000	100,000	1,200,000
19	Office Boy	1	20,000	20,000	240,000	1	20,000	20,000	240,000	1	20,000	20,000	240,000	1		20,000	20,000	240,000
	Sub Total of HR Model			4,860,000	17,220,000			4,860,000	17,220,000			5,040,000	28,140,000				5,273,000	40,473,000
					17,220				17,220				28,140					40,473
	Utilization of HR Component								7.010									11.12
	Total of HR Component																	35.15
																		51.589

Janitorial Services

	Original		From 1st Revised to onward
Assumptions			In the light of decision made during the Progress Review Meeting of Revamping of DHQ/THQ Hospitals held on 01-01-2018 under the Chairmanship of Chairman, P&D Board: it was inter alia decided as under: "It would be made sure by the P&SH Department that the outsourcing would be shifted to the non-development side from 1st July 2018 next FY". In view of above, Outsourcing cost has been excluded from this PC-I.
Covered area excluding residential area	38,606	sft	
Covered area assigned to one sweeper	7,500	sft	
Number of sweepers required for covered area	5	Persons	
Road and ROW area	44,849	sft	
Road and ROW assigned to one sweeper	15,000	sft	
Number of sweepers required for road and ROW area	3	Persons	
Number of washroom blocks	29	blocks	
Number of washroom block assigned to one sweeper	3	Persons	
Number of sweepers required for total washroom blocks	10	Persons	
Total sweeper in morning shift	18	Persons	
Total number of sweepers in evening shift	9	Persons	
Total number of sweepers in night shift	9	Persons	
Total number of sweepers in all shifts	36	Persons	
Number of sewer men required	3	Persons	
Number of supervisors	3	Persons	
Salary component			
Type of worker	No of workers	Salary per month	Salary for One Year
Sweepers / Janitors	36	22,000	9,405,862
Sewer men	3	22,000	792,000
Supervisors	3	26,000	936,000
Cost of Supply per Month		400,000	4,800,000
Sub Total (Salary component)			15,933,862

15.934

Security and Parking

	Original		From 1st Revised to onward		
Assumptions					
Covered area excluding residences	38,606				
Covered Area per guard	15,000				
Number of guards	3				
Open area excluding parking area	44,849				
Area covered per guard per shift for open area excluding parking	15,000				
Number of guards for total area excluding parking area	3				
Number of gates	3				
Number of guards at gates	6				
Total No of Guard	12				
Total number of all guards for second shift	6				
Lady Searcher	4				
Number of parking areas	1				
Number of guards for parking lot per shift (Morning+ Evening)	2				
Total no. of Supervisors	2				
Type of worker	No of workers	Salary per month	Salary per Month for all Person	Salary for One year	
Supervisors	2	24,675	49,350	592,200	
Ex-Army	7	21,525	150,675	1,808,100	
Civilian	10	21,000	210,000	2,520,000	
Lady Searcher	4	21,525	86,100	1,033,200	
Parking	2	21,525	43,050	516,600	
Sub total				6,470,100	
Equipment cost					
Lump sum Provision (Walk Through Gate=1, Metal Detector=4, Walkies Talkies=8, Base Set=1)				400,000	
Sub total				400,000	
Subtracting Parking Fees				500,000	
Total Security and Parking Services				6,370,100	
				6.370	

In the light of decision made during the Progress Review Meeting of Revamping of DHQ/THQ Hospitals held on 01-01-2018 under the Chairmanship of Chairman, P&D Board; it was inter alia decided as under:
"It would be made sure by the P&SH Department that the outsourcing would be shifted to the non-development side from 1st July 2018 next FY".
 In view of above, Outsourcing cost has been excluded from this PC-I.

Laundry Services

	Original		From 1st Revised to onward
Number of beds	60		
Type of Item	No of Beds	Per bed cost per year	Total Cost
No of Bed	60	30,000	1,800,000
Transport Charges			1,200,000
Total for laundry items			3,000,000
Total			3.000

In the light of decision made during the Progress Review Meeting of Revamping of DHQ/THQ Hospitals held on 01-01-2018 under the Chairmanship of Chairman, P&D Board; it was inter alia decided as under:
"It would be made sure by the P&SH Department that the outsourcing would be shifted to the non-development side from 1st July 2018 next FY".
 In view of above, Outsourcing cost has been excluded from this PC-I.

Maintenance of Generator

Item Name	Original			From 1st Revised to onward
	Quantity	Cost per year	Total Cost	
Periodical Maintenance Cost				In the light of decision made during the Progress Review Meeting of Revamping of DHQ/THQ Hospitals held on 01-01-2018 under the Chairmanship of Chairman, P&D Board; it was inter alia decided as under: "It would be made sure by the P&SH Department that the outsourcing would be shifted to the non-development side from 1st July 2018 next FY". In view of above, Outsourcing cost has been excluded from this PC-I.
Number of Generators (200 KVA)	-	500,000	-	
Number of Generators (100 KVA)	1	300,000	300,000	
Number of Generators (50 KVA)	1	175,000	175,000	
Repairs Cost	1	475,000	475,000	
HR Cost				
Supervisor	1	40,000	240,000	
Generator Operator	3	30,000	1,080,000	
Technical Staff/Mechanic	-	30,000	-	
Total			2,270,000	

2.270

MEP

		Original			From 1st Revised to onward	
Type of worker / Component	No of workers	Salary per month	Salary per Month for all persons	Salary for One Year		
Supervisors	1	56,420	56,420	677,040	In the light of decision made during the Progress Review Meeting of Revamping of DHQ/THQ Hospitals held on 01-01-2018 under the Chairmanship of Chairman, P&D Board; it was inter alia decided as under: "It would be made sure by the P&SH Department that the outsourcing would be shifted to the non-development side from 1st July 2018 next FY". In view of above, Outsourcing cost has been excluded from this PC-I.	
Plumber	1	32,550	32,550	390,600		
AC/ Technician	1	34,720	34,720	416,640		
Electrician	2	31,465	62,930	755,160		
Car painter	1	30,380	30,380	364,560		
Total (Salary component)			217,000	2,604,000		
	No.	Per Unit Cost per Year	Cost per Year for all Items	Cost for One Year		
A/C	116	6,665	773,140	773,140		
Fridge	10	4,000	40,000	40,000		
UPS	15	8,000	120,000	120,000		
Water Cooler	20	4,000	80,000	80,000		
Exhaust	10	3,000	30,000	30,000		
Geyser	20	4,000	80,000	80,000		
Water Pump	8	3,000	24,000	24,000		
Carpentry Work		-	180,000	180,000		
Electrical Work		-	120,000	120,000		
Plumbing Work		-	75,000	75,000		
Sub Total				1,522,140		
General Total				4,126,140		
				4.126		

Medical Gases

		Original				From 1st Revised to onward
Scope of Work		Monthly Consumption per THQ Hospital	Annual Consumption per THQ Hospital	Rate per Cylinder	Total Annual Cost per THQs	
Oxygen	Medical Oxygen Gas in 240 CFTCylinder (MM)	12	144	1850	266,400	<p style="text-align: center;">In the light of decision made during the Progress Review Meeting of Revamping of DHQ/THQ Hospitals held on 01-01-2018 under the Chairmanship of Chairman, P&D Board; it was inter alia decided as under:</p> <p style="text-align: center;">"It would be made sure by the P&SH Department that the outsourcing would be shifted to the non-development side from 1st July 2018 next FY".</p> <p style="text-align: center;">In view of above, Outsourcing cost has been excluded from this PC-I.</p>
	Medical Oxygen Gas in 48 CFTCylinder (MF)	30	360	1,000	360,000	
	Medical Oxygen Gas in 24 CFTCylinder (ME)	40	480	800	384,000	
Nitrous Oxide	Nitrous Oxide in 1,620 Liter (XE)	2	24	5,000	120,000	
	Nitrous Oxide in 16,200 Liter (XM)	1	12	12,500	150,000	
Nitrogen Gas	Nitrogen Gas	1	12	2,000	24,000	
Total					1,304,400	

1.304

Cafeteria

Pre-Fabrication Cateen (Procurement)

Sr. No.	Description of work	Original				From 1st Revised to onward
		Unit	Qty	Rate (Rs)	Amount (Rs)	
						In the light of decision made during the Progress Review Meeting of Revamping of DHQ/THQ Hospitals held on 01-01-2018 under the Chairmanship of Chairman, P&D Board; it was inter alia decided as under: "It would be made sure by the P&SH Department that the outsourcing would be shifted to the non-development side from 1st July 2018 next FY". In view of above, Outsourcing cost has been excluded from this PC-I.
1	Excavation in foundation of building, bridges and other structures, including dagbelling, dressing, refilling around structure with excavated earth, watering and ramming lead upto one chain (30 m) and lift upto 5 ft. (1.5 m) for ordinary soil	Cft	2545	6.13	15,602	
2	Spraying anti-termite liquid mixed with water in the ratio of 1:40.	Sft	4305	2.21	9,514	
3	Supplying and filling sand of approved quality from outside sources under floors etc complete in all respects.	Cft	2268	15.62	35,426	
4	Providing, laying, watering and ramming brick ballast 1½" to 2"(40 mm to 50 mm) gauge mixed with 25% sand, for floor and foundation, complete in all respects.	Cft	998	39.15	39,069	
5	Providing and laying damp proof course (1½" thick (40 mm)) of cement concrete 1:2:4, with one coat bitumen and one coat polythene sheet 500gauge	Sft	318	43.34	13,789	
6	Brick work with cement, sand mortar ratio 1:5	Cft	1792	180.25	323,071	
7	Cement concrete plain Ratio 1: 4: 8 including placing, compacting, finishing and curing complete (including screening and washing of stone aggregate)	Cft	427	170.72	72,893	
8	Cement concrete plain Ratio 1: 2 : 4 including placing, compacting, finishing and curing complete (including screening and washing of stone aggregate)	Cft	1043	190.48	198,746	
9	Placing Granite tiles (24"x24"x0.5") using white cement over a bed of ¾" (20 mm) thick cement mortar 1:6.	Sft	2160	200.00	432,000	
10	Providing and laying Tuff pavers, having 7000 PSI, crushing strength of approved manufacturer, over 2" to 3" sand cushion i/c grouting with sand in joints i/c finishing to require slope . complete in all respect.	Sft	720	118.00	84,960	
Total Amount of Platform Construction					1,225,070	
Pre-Fabrication of Canteen Structure						
11	Providing and fixing aluminium frame window with double glazed glass 6mm+6mm thick complete in all respect as approved by engineer	Sft	48	1100.00	52,800	
12	Providing and fixing aluminium frame door with single glazed glass 6mm thick complete in all respect as approved by engineer	Sft	56	700.00	39,200	
13	Fixing of frameless Glass wall of approved quality and design as approved by engineer	Sft	550	1500.00	825,000	
14	Providing Granite skirting or dado 4/8"(13 mm) thick including rounding of corner and straight ening of top edge and finishing to smooth surface afterplastering	Sft	491	212.00	104,177	
15	Placing & erection of pre-painted Box section tube Columns of M.S sheet 4mm thick of size 4" x4" complete in all respect.	Kg	693	150.00	103,950	
16	Placing & erection of pre-painted Box section tube Rafters of M.S sheet 4mm thick of size 3" x3" with all fittings, complete in all respect.	Kg	1040	150.00	155,925	
17	Placing & erection of pre-painted Box section tube Purlins of M.S sheet 1.6 mm thick (16 Gauge) of size 2" x2", with all fittings, complete in all respect.	Rft	676	120.00	81,144	
18	Placing & erection of pre-painted, Galvanized Sandwiched board of 0.5 mm thick M.S sheet with 50mm PU insulation with all fittings, complete in all respect.	Sft	2640	400.00	1,055,800	
19	Placing & fixing glass wool complete in all respect.	Sft	3024	50.00	151,200	
20	Placing & fixing Gypsum False Ceiling, complete in all respect.	Sft	3024	70.00	211,680	
21	Providing & Fixing corrugated galvanized iron sheets 22 gauge with EPDM screw fittings, complete in all respect.	Sft	3629	145.00	526,176	
Total Cost of Pre-Fabrication of Canteen Structure					3,307,052	
Total Amount (Rs)					4,532,121	
22	Electrification				998,735	
23	Plumbing and Sanitary				410,000	
24	Kitching Fixtures				802,000	
Grand Total Amount (Rs)					6,742,856	

6.743

**LANDSCAPE DEVELOPMENT WORKS
COST ESTIMATE**

Sr. No.	Description	Original				From 1st Revised to onward
		Unit	Quantity	Unit Rate Rs.	Amount Rs.	
1	SOFT LANDSCAPE					<p>In the light of decision made during the Progress Review Meeting of Revamping of DRQ/THQ Hospitals held on 01.01.2018 under the Chairmanship of Chairman, P&D Board; it was inter alia decided as under:</p> <p>"It would be made sure by the P&SH Department that the outsourcing would be shifted to the non-development side from 1st July 2018 next FY".</p> <p>In view of above, Outsourcing cost has been excluded from this PC-I whereas Rs. 0.048 million has been charged in this scheme against Design Consultancy from development side before the above said decision, hence it is reflected in this PC-I.</p>
1.1	TOP SOIL					
	Providing, spreading and leveling of topsoil (sweet soil including manure and fertilizers) as required complete in all respects as per Drawings, Specifications and as approved by the Engineer.	Cft	4,033	22	88,726	
1.2	STONE / PEBBLES					
	Supply and laying a layer of pebbles/stone at specified locations with Landscape base as in Landscape Design approved by the Engineer.	Truck	1	34,375	34,375	
1.3	GRASSING					
a	GRASSING (EXISTING NON MAINTAIN LAWNS)					
	Providing and dibbing of Fine Dacca grass where required, including mud filling/leveling and contour shape preparation conforming to the criteria outlined in the Specifications, complete in all respects as per Drawings, Specifications and as approved by the Engineer.	Sft	5,531	7	38,717	
b	GRASSING (NEW LAWNS)					
	Providing and dibbing of Fine Dacca grass, including mud filling/leveling and contour shape preparation conforming to the criteria outlined in the Specifications, complete in all respects as per Drawings, Specifications and as approved by the Engineer.	Sft	6,914	11.25	77,783	
1.4	TREE / SHRUBS (SPREADING)					
	Providing and planting tree/ shrubs as listed and as arrangement and type shown in the Drawings, in pits of size 305mm x 305mm x 305mm. Dug in improved soil 610mm, deep filled by adding 10% cow dung manure and confirming to the criteria outlined in the Specifications, complete in all respects and to the satisfaction of Engineer.					
a	Trees 18" pot 6'-7" - Terminally, Cassia Fistula, Bauhinia Variegated, Alstonia Choirs, Ficus Yellow, Ficus Black, Jacaranda, Pilken, Mandarera etc.	No's	28	1,500	42,000	
b	Trees 12" pot 3'-4" - Polyalthia Long folia, Terminally, Cassia Fistula, Bauhinia Variegated, Latonia Choirs, Delonix Regia, Ficus Yellow, Ficus Black, ficus Starlight, Melaluca, Mimussps, Pine, Ficus Amestal, Pilken, Palms etc.	No's	7	270	1,890	
c	Plantation of Fruit Plants in the vacant area 12" pot 3'-4" - Am rood, Jaman, Berri, Mango, Citrus. Including site preparation, plantation, watering and maintenance for six months.	No's	-	600	-	
1.5	SHRUBS AND ORNAMENTAL PLANTS					
	Shrubs and Ornamental Plants 10" pot Pittosporum Variegated, Murray Small, Isora Coccinea, Juniper Variegated, Hibiscus Variegated, Carronda Dwarf Sp, Jasmine Sambac(Motry), Leucophyllum Frutescens(Silvery), Rose, Nerium, Lantana, Carina, Asparagras, Conocarpus, Acalypha, Callistemo Dwarf, Cestrum, Thabernaemontana Variegated etc.	No's	2,514	69	173,466	
a	Shrubs and Ornamental Plants 12" pot Pittosporum Variegated, Isora Cochinea, Juniper Variegated, Carronda Dwarf, Jasmine Thai, Plumier Robar, Cassia Malacca, Largest mea, Euphorbia, Jestropha Thai etc.	No's	395	195	77,025	
1.6	GROUND COVERS					
	Providing and planting ground covers as listed and as arrangement and type shown in the Drawings, in pits of size 150mm x 150mm x 150mm. Dug in improved soil 610mm deep filled by adding 10% cow dung manure and confirming to the criteria outlined in the Specifications, complete in all respects and to the satisfaction of Engineer.					
	Ground Cover Plastic Bag Plants Alternant Hera, Dianella, Iresine (Red), Hemercolis(Davily), Duranta etc.	No's	2,685	12	32,220	
1.7	PALMS					
	Providing and planting palms as per Drawings, specifications and to the satisfaction of Engineer.					
a	Palm 18" pot - Queen Palm, Wodyetia Bilurcate, Washingtonian Palm, Biskarkia etc.	No's	3	3,675	11,025	
b	Palm 18" pot - Phoenix Palm, Cyrus Palm	No's	4	1,800	7,200	
1.8	CREEPERS					
	Providing and planting Creepers as listed and as arrangement and type shown in the Drawings, in pits of size 305mm x 305mm x 305mm. Dug in improved soil 610mm, deep filled by adding 10% cow dung manure and confirming to the criteria outlined in the Specifications, complete in all respects and to the satisfaction of Engineer.					
	Creepers 12" Pot - Bougainvillea, Bonsai, Qusqualus, Bombay Creeper etc.	No's	13	195	2,535	
2	HARD LANDSCAPE					
2.1	WALK WAYS					
a	Excavation of walkways and edging including brick ballast under 12"X14" curb stones fixing with 1:2:4 PCC, supply of 7000PSI tuff tiles 60mm as per approved design fixing on 4" brick ballast compacted and grouting with sand.	Sft	553	150	82,950	
2.2	BENCHES					
	Concrete Bench 5' wide complete in all respects and to the satisfaction of Engineer as per approved design.	No's	3	14,698	44,094	
2.3	DUSTBINS					
	Complete in all respects and to the satisfaction of Engineer as per approved design.	No's	2	27,700	55,400	
2.4	PLAYING EQUIPMENTS					
	Complete in all respects and to the satisfaction of Engineer as per approved design.	No's	1	544,939	544,939	
2.5	PLANTERS					
	Concrete planters 2' X 2'-1/2' complete in all respects and to the satisfaction of Engineer as per approved design.	No's	2	3,850	7,700	
2.6	WATER POINTS (Injector Pump 1HP)					
		No's	1	45,000	45,000	
3	SOFT LANDSCAPE MAINTENANCE					
	(Including maintenance and up keeping of site for 6 months) after development as per specifications and to the satisfaction of Engineer.	Sft	13,827	9.00	124,443	
4	CONSTRUCTION OF PLANTERS					
	Large Size					
4.1	with keystones fixed with cement with top concrete slab as per design and to the satisfaction of Engineer.	No's	54	550	29,700	
	Medium Size					
4.2	with keystones fixed with cement with top concrete slab as per design and to the satisfaction of Engineer.	No's	7	550	3,850	
	Small Size					
4.3	with keystones fixed with cement with top concrete slab as per design and to the satisfaction of Engineer.	No's	13	550	7,150	
5	GAZEBO					
	Construction of Gazebo 12' X 12' with top fiberglass 3 layer canopy as per approved design and to the satisfaction of Engineer.	No's	1	200,000	200,000	
	Total Amount of - Landscaping				1,732,188	
	PRA(16%)				277,150	
	Design Consultancy				100,000	
	Grand Total				2,109,338	
					2,109	

Phone & Fax .0622-9250334

From,

The Superintending Engineer,
Buildings Circle, Bahawalpur.

To,

The Project Manager (Civil)
Project Management Unit P&SHD Department,
Lahore.

No. /DB, Dated /2022

Subject: **PROGRAMME FOR REVAMPING OF ALL THQ HOSPITALS IN PUNJAB ONE AT TEHSIL THQ HOSPITAL LIAQUATPUR DISTRICT RAHIMYARKHAN".**
ADP NO.658/2022-2023".

The scheme was approved for amounting to **Rs.44.187(M)** by the Secretary, Primary & Secondary Healthcare Department vide No.PO(D-II)1-237/2021: dated 09.11.2021. The work could not be allotted due to non provision of funds. Now, this scheme is again reflected in ADP 2022-23 at serial No.658.

Hence this revised rough cost estimate amounting to **Rs.49.535 (M)** for the scheme cited as subject has been reframed on the basis of fresh MRS for 2nd Bi-Annual 2022 is being submitted herewith dully vetted for arranging revised administrative approval, please.

DA/ Estimate


Superintending Engineer,
Buildings Circle, Bahawalpur

No. & Date Even:

A copy is forwarded to the Executive Engineer, Building Division Rahimyarkhan with reference to his office letter No.751/DB, dated 08.11.2022 for information.


Superintending Engineer,
Buildings Circle, Bahawalpur

(9/3)

PUNJAB BUILDINGS DEPARTMENT



PROVINCE:

PUNJAB

CIRCLE:

BUILDINGS CIRCLE BAHAWALPUR

DIVISION:

BUILDINGS DIVISION RAHIM YAR KHAN

SUB DIVISION:

BUILDINGS SUB DIVISION LAIQUAT
PUR.

SUBJECT:

**REVISED ROUGH COST
ESTIMATE FOR THE SCHEME
"PROGRAM FOR REVAMPING OF
ALL THQ HOSPITAL IN PUNJAB
ONE AT THQ LIAQATPUR
DISTRICT RAHIM YAR KHAN."
ADP NO.658/2022-23.**

ESTIMATED COST:

49.535 (M)
RS:47306000/-

REVISED ROUGH COST ESTIMATE FOR THE SCHEME "PROGRAM FOR REVAMPING OF ALL THQ HOSPITAL IN PUNJAB ONE AT THQ LIAQATPUR DISTRICT RAHIM YAR KHAN." ADP NO.658/2022-23.

Government of Punjab is providing Health Facilities to the peoples of province. The THQ hospital Liaquatpur was constructed in 1985 and since then is providing the health facilities to the people of tehsil Liaquatpur and residents of cholistan. With the passage of time the existing structure has been deteriorated and required renovation work to meet with the current needs to Health care facilities.

In this regard a scheme for provision of "PROGRAM FOR REVAMPING OF ALL THQ HOSPITAL IN PUNJAB ONE AT THQ LIAQATPUR DISTRICT RAHIM YAR KHAN" is Reflected in ADP G.S No.658 in Annual Development Program 2022-23.

The team of project Management Unit Health Department has visited the site along with Buildings Department on 07.07.2022 to identify the area to revamped and finalized of scope of work. The scope of work is provided by the Project Management Unit Department on 29.07.2022.

This estimate has been framed as per specification finalized by the Chief Architect Punjab Lahore vide letter No.CA/1332-44, dated 30.06.2022 as well as the scope identified by the PMU. However, some items which are already taken up by IDAP in emergency block are not taken in the estimate.

The followings areas of THQ hospital Liaquatpur have been selected for revamping:-

1. Indoor Block
2. Linking corridors between emergency, indoor and OPD block
3. OPD block
4. External Development Work

Keeping in view the requirement of the client department rough cost estimate amounting to **Rs. 49,535** (M) has been framed accordingly is submitted to arranging administrative approval and funds from the competent authority please.

SCOPE OF WORK:-

The following scope of work provided by the project management unit health department has followed while preparing this rough cost estimate:-

- i. Replacement of flooring 24" x 24" Porcelain Tile
- ii. Granite Marble in front entrance steps
- iii. Laying China Verona Marble in stair steps
- iv. Erection of LED lights
- v. Painting to door & windows & replacement of some doors and windows are required.
- vi. Distemping and emulsion paint to inside of all building.
- vii. Weather shield outside of building.
- viii. Roof treatment.
- ix. Revamping of public toilets (replacement of floor tiles + Dado/skirting of 7 ft height, replacement of doors and replacement of sanitary fitting, water supply, nikasi pipe and vanities.
- x. Revamping of internal electrification.
- xi. External sewerage system.

RATES:-

The estimate has been prepared on the basis of MRS / Plinth Area Rates 2nd Bi-Annual 2022.

COST:-

Total Cost of this scheme works out to ^{49.535}Rs. ~~47.306~~ (M).

SPECIFICATION:-

Specification finalized by the Chief Architect Punjab Lahore vide letter No.CA/1332-44, dated 30.06.2022 has been adopted and the work will carried out at site through the Govt. Contractor after calling competitive tenders as per usual practice if the department.

TIME LIMIT:-

It will take about **12-Months** to complete the work from the actual date of commencement. Provided adequate funds are required.


Sub Divisional Officer,
Buildings Sub Division
LiaquatPur


Executive Engineer;
Buildings Division,
Rahim Yar Khan

ROUGH COST ESTIMATE FOR "PROGRAM FOR REVAMPING OF ALL THE HOSPITALS IN PUNJAB ONE AT TERMINAL HEAD QUARTER HOSPITAL LAQUAT PUR DISTRICT RAHIM YAR KHAN" ADP NO.10137021-22.

Sr. No.	Description	ABSTRACT OF COST				Total	Unit	Amount	Remarks
		Plinth Area	2nd bi 2021 Plinth Area Rates						
			B.P	E.I	P.H S.G				
A	CLINICAL BUILDING (Internal Development, Tile Work, Ramp, Stair Paint & Dampness work lead wiring, facade improvement, internal fixtures, internal electrification and miscellaneous repair work of building)								
1	Revamping of Main Building for 25-10-22 vide of (25-71742)						27990534	Detailed Attached	
2	Provision of Razor cut wire (597+437+697+437-193-(4x16)=2011-Rft	2011	435				25109701	Detailed Attached	
3	PARKING SHED FIBER (12'X18')X2	482	755		755		328160		
4	EXTERNAL DEVELOPMENT						10500000		
							89809930		
							45065430	46142459	
							450654	461425	
							225322	2037193	
							1000000		
	Add Cost for Sui Gas payable to SNGPL						48779429	44187007	
							48770	Million	
							44187		

Executive Engineer
Building Division
Rahim Yar Khan

Sub-Division Officer,
Building Sui Division
Rahim Yar Khan

(Signature)

REVISED ROUGH COST ESTIMATE FOR THE SCHEME "PROGRAM FOR REVAMPING OF ALL THQ HOSPITAL IN PUNJAB ONE AT THQ LIAQATPUR DISTRICT RAHIM YAR KHAN." ADP NO.658/2022-23.

Name of work:-

- a Administrative approval.
- b Number and date.
- ii) Amount of revised estimate

44.187 (M)

No.

Rs. ~~47.306~~ (M)
49.535

Sr. No.	Description of Items	As Per Approved Rough Cost Estimate				As Per Revised Rough Cost Estimate								Amount (B+C)	Difference (B+C)-A	Remarks			
		Plinth area/ Quantity	Rate	Unit	Total Rs.) A	Work Already Allotted on Old Rates				Date of Allotment	Date & Amount of	Work Yet to be Allotted on Revised Rates							
						Plinth area/ Quantity	Rate	Unit	Total Rs.) B			Plinth area/ Quantity	Rate				Unit	Total Rs.) C	
1	2	3	4	5	6	7	8	9	10	11	12	13	14	15	16	17	18	19	
1	Clinical Building (Internal Development, Tile Work, Ramp, Stair Paint & Dampness Work lead lining, façade improvement, internal fixtures, internal electrification and miscellaneous repair work of building)	1	Job	27980544	P.Job	27,980,544											0	Based on MRS / Plinth Area Rates 2nd Bi Annual 2021.	
	Revamping of Main Building for 35-Nos. Toilets	1	Job	2510970	P.Job	2,510,970											0		
	Revision of Razor Cut Wire (697-437+697-437+193-(4x16)=2011-Rft	1	Job	874785	P.Job	874,785											0		
	Construction of Parking shed (Fiber) (2-Nos.x12x18)	1	Job	326160	P.Job	326,160											0		
2	REVAMPING OF MAIN BUILDING (O.P.D, TRAUMA CENTRE, DIALYSIS)					31,692,459						1	Job	30834680 42,987,000	P.Job	40,894,000 42,987,000	42,987,000	112,945,41	Based on MRS / Plinth Area Rates 2nd Bi Annual 2022 and scope provided by PMU.
2	External Development	1	Job	9050000	P.Job	9,050,000						1	Job	1,386,000	P.Job	1,386,000	1,386,000	-7,664,000	Detailed
	TOTAL RS.					40,742,459											42,270,000	42,270,000	1,527,541
	Add 01% Charges for Horticulture					407,425											44,373,000	44,373,000	3,630,541
	Add 05% PRA Tax					2,037,123											46,700,000	46,700,000	5,275,000
	Add for WAPDA connection charges					1,000,000											47,700,000	47,700,000	7,275,000
	G. TOTAL RS.					44,187,007											49,306,200	49,306,200	5,119,198
	SAY RS.					44,187,000											47,306,000	47,306,000	3,119,000
	SAY IN MILLION RS.					44.187 (M)											47.306 (M)	47.306 (M)	5.119 (M)

Rs = 49.535 (M) 49.535 5.348

[Signature]
Sub Engineer

[Signature]
Sub Division Officer
Buildings Sub Division
Liaqat Pur

[Signature]
Executive Engineer
Buildings Division
Bahawalpur

[Signature]
Superintending Engineer
Buildings Circle Bahawalpur

ROUGH COST ESTIMATE FOR THE SCHEME "PROGRAM FOR REVAMPING OF ALL THQ HISPITAL IN PUNJAB ONE AT THQ LIAQATPUR DISTRICT RAHIM YAR KHAN." ADP NO.658/2022-23.

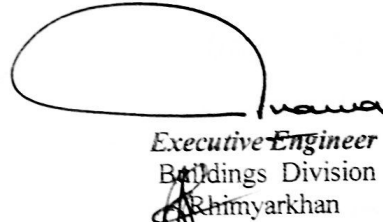
ABSTRACT OF COST

1	REVAMPING OF MAIN BUILDING (O.P.D UNIT, TRAUMA CENTRE, DIALYSIS UNIT)	Rs:	42987000 40884000
2	EXTERNAL DEVELOPMENT	Rs:	1386000

	Total	Rs:	42270000 44373000
Add for 1% PHA		Rs:	422700 443730
Add for 5% PRA		Rs:	2413500 2218680
Add for external Sui Gas Connection Payable To SNGPL		Rs:	2500000
	Total	Rs:	47306200 49535380
	Say	Rs:	47306000 Rs = 495,35,000


Sub Engineer


Sub Divisional Officer
Buildings Sub Division

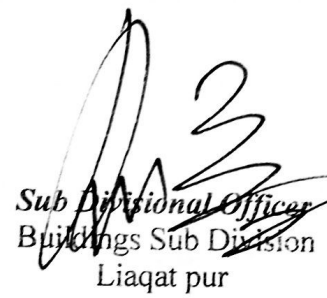

Executive Engineer
Buildings Division
Rahimyarkhan

**DETAILED ESTIMATE FOR "FOR REVAMPING OF THQ
HOSPITAL, LIAQUAT PUR DISTRICT RAHIM YAR KHAN."
ADP NO. 1013/2021-22.**

ABSTRACT OF COST

1 EMERGENCY AND INDOOR BLOCK .	Rs:	37719000/- 36130958
2 REVAMPING OF O.P.D UNIT.	Rs:	41735 3561929 4016000/-
Total		Rs: 41735000 39692887
Add 03% Contingency		1252080 1190787
Total		Rs: 42987050 40883673
Say		Rs: 42987000 40884000


Sub Engineer


Sub Divisional Officer
Buildings Sub Division
Liaquat pur


Executive Engineer .
Buildings Division
Rahimyarkhan

**ROUGH COST ESTIMATE FOR THE SCHEME "PROGRAM FOR REVAMPING OF ALL
THQ HISPITAL IN PUNJAB ONE AT THQ LIAQATPUR DISTRICT RAHIM YAR KHAN."**

ADP NO.658/2022-23.

(EMERGENCY AND INDOOR BLOCK)

1	Removing door with chowkat.	=	27	Nos				
		@	438.00	Each		Rs11,826		
2	Fixing door, including chowkats.	=	27	Nos				
		@	729.95	Each		Rs19,709		
3	Dismantling cement concrete 1:2:4 Plain, EME/Trauma P.P	2	x	864.2	x	4.0	x	0.125
		Total	=	864	Cft			
			@	11174.60	%Cft	Rs96,549		
4	Providing and laying conglomerate flooring (two coat work) with top layer of 1/2" (13mm) thick wearing surface, for panelling, consisting of one part of cement and 2 parts of stone chips passing 3/16" (6 mm) sieve, over bottom layer of cement concrete 1:3:6, including surface finishing and dividing in panels 1-1/2"	2	x	864.5	x	4.0		
		Total	=	6916	Sft			
			@	7580.60	%Sft	Rs524,274		
5	Providing and fixing marble strip of any shade for dividing the mosaic flooring into panels Size 1 1/2" x 1/4" (40 x 6 mm)	1	x	6916	x	0.5		
		Total	=	3458	Pft			
			@	15.85	P.Rft	Rs54,809		
6	Dismantling mud concrete.	2	x	864.5	x	4.0	x	0.25
		Total	=	1729	Cft			
			@	2031.75	%Cft	Rs35,129		
7	Providing, laying, watering and ramming brick ballast 1 1/2" to 2" (40 mm to 50 mm) gauge mixed with 25% sand, for floor foundation, complete in all respects.	2	x	864.5	x	4.0	x	0.25
		Total	=	1729	Cft			
			@	9284.40	%Cft	Rs160,527		
8	Dismantling brick or flagged flooring without concrete foundation. <i>Roof</i>	1	x	61.25	x	50.33		
			=	3083	Sft			
		1	x	9.25	x	37		
			=	342	Sft			
		1	x	135.3	x	64		
			=	8656	Sft			
		2	x	10	x	20		
			=	400	Sft			
		2	x	95	x	46.5		
			=	8835	Sft			
		2	x	64	x	26		
			=	3328	Sft			
		2	x	42	x	9		
			=	756	Sft			
		1	x	21.67	x	4.5		
			=	97	Sft			
		1	x	35	x	31.25		
			=	1094	Sft			
		1	x	121	x	41.5		
			=	5022	Sft			
		2	x	9	x	28.5		
			=	513	Sft			
		2	x	31.33	x	16.25		
			=	1018	Sft			
		2	x	28.5	x	10.5		
			=	599	Sft			
		1	x	25.5	x	12		
			=	306	Sft			
		1	x	48	x	16.417		
			=	788	Sft			
		1	x	13.33	x	25		
			=	333	Sft			
D/d		-27	x	2	x	2		
		Total:-	=	35062	Sft			
			@	863.50	%Sft	Rs302,759		
9	Dismantling glazed or encaustic tiles, etc.		=	3000	Sft			
Corridor		2	x	125	x	12.0		
			=	3240	Sft			
Cirridor		2	x	135	x	12.0		

13 Providing and laying superb quality Ceramic tile floors of Master brand of specified size, Glossy / Matt / Texture of approved Color and Shade as per approved design with adhesive bond, over 3/4" thick (1:2) cement sand plaster i/c the cost of sealer for finishing the joints i/c cutting grinding complete in all respects and as approved and directed by the Engineer Incharge.

Bath	10	x	5	x	6	=	300	Sft
Bath	17	x	3.5	x	6	=	357	Sft
Total						=	657	Sft
						@	239.90	P.Sft

Rs157,614

14 Providing and laying superb quality Ceramic tiles dado of Master brand of specified size, Glossy / Matt / Texture skirting / dado of approved Color and Shade with adhesive bond over 1/2" thick (1:2) cement plaster i/c the cost of sealer for finishing the joints i/c cutting grinding complete in all respects as approved and directed by the Engineer Incharge.

Bath	10	2	(5	+	6.0)	7	=	1540	Sft
Bath	17	2	(3.5	+	5.0)	7	=	2023	Sft
Total									=	3563	Sft
									@	239.90	P.Sft

741281 /
Rs854,764

15 Providing and laying Full body Glazed tiles superb quality Porcelain glazed tiles flooring of MASTER brand of specified size in approved design, Color and Shade with adhesive / bond over 3/4" thick (1:3) cement plaster i/c the cost of sealer for finishing the joints i/c cutting grinding complete in all respect as approved and directed by the Engineer Incharge. (Non-Skid Chequered Tiles) 300mmx300mm

D/O door

Net 3090

	2	x	24	x	6.0	=	288	Sft
Total						=	288	Sft
						@	204.55	P.Sft

Rs58,910

16 Cement plaster 1:4 upto 20' (6.00 m) height: -1/2" (13 mm) thick After Removing.

	2	x	844.5	x	2.25	=	3800	Sft
Total:-						=	3800	Sft
						@	3664.90	%Sft

Rs139,275

17 Providing and applying weather shield paint of approved quality on external surface of building including preparation of surface, application of primer complete in all respect: old surface after scraping.

Trama	2	x	864.2	x	16	=	27653	Sft
Room	2	x	66.25	x	16	=	2120	Sft
	2	x	17	x	16	=	544	Sft
	1	x	133	x	16	=	2128	Sft
Total:-						=	32445	Sft
						@	5045.30	%Sft

Rs1,636,960

18 Providing and fixing false ceiling comprises of Gypsum board laminated sheet of size 2'x2' / 2' x 3' / 3'x3' of specified design and thickness i/c cost of fixtures i.e galvanized angle 1" x 1" at wall sides, galvanized tee 1 1/4" x 1" and 1 1/2" x 1" both at 4' c/c (made of Taiwan CKM or equivalent), hanging with G.I / Copper wire 16 SWG, G.I hook, Rawal Plug etc: complete in all respects as approved and directed by the Engineer Incharge. 12 mm thick

Corridor	1	x	125	x	12.0	=	1500	Sft
Cirridor	1	x	135	x	12.0	=	1620	Sft
Enter labour+Pead	2	x	19	x	36.0	=	1368	Sft
Corridor Labour	1	x	78	x	12.0	=	936	Sft
Total:-						=	5424	Sft
						@	99.85	P.Sft

Rs541,586

19 Providing and fixing all types of partly fixed and partly openable glazed anodised/ powder coated aluminium doors, using delux section of M/s Al-Cop or Pakistan Cables, having chowkat frame of size 40 x 100 mm (1 1/2" x 4") and leaf frame of 60x40mm (2 1/2"x1 1/2") wide sections including the cost of 1/4" (5 mm) thick imported tinted glass with aluminium triangular gola and rubber gasket to support the glass and leaf edging, using approved standard fittings, locks, 3" (75 mm) wide long handles etc., and hardware any required as approved by the engineer in-charge.

D1	12	x	3.5	x	7	=	294	Sft
D2	7	x	4	x	7	=	196	Sft
D3	5	x	3	x	7	=	105	Sft
Total:-						=	595	Sft
						@	1437.50	P.Sft

Rs855,313

20 Providing and fixing Stain less steel pipe stair railing comprising of 1-No. 2" dia steel pipe 18 SWG Top rail, 2" dia steel pipe for vertical posts @ 2-ft c/c 2'-9" high, 3-Nos horizontal steel pipes 1/2" dia fixed on steps with 3" long steel screws and brass rawal plugs 3" long, i/c fixing carriage & polishing complete in all respects as approved by the Engineer Incharge.

2	x	26			
2	x	22		=	52 Rft
2	x	12		=	44 Rft
				=	24 Rft
Total:-				=	120 Rft
				@	2361.45 P.Rft

Rs283,374

21 Providing and fixing 1/2" (40mm) thick solid flush door comprising of 2.5mm thick Deodar/Ash/Oak ply with grooves, compressed over 2.5 mm thick commercial ply over 1" thick packingwood instyleand railsunder proper pressure i/c the cost of nails, tower bolt, handles, glue, sawing charges and lacquar polishing to show the grains of ply properly, sand papering and 3/8" thick matching wooden lipping as approved and directed by the Engineer Incharge.

6	x	3.5	x	7	
8	x	4	x	7	= 147 Sft
6	x	2.5	x	7	= 224 Sft
2	x	4	x	8	= 105 Sft
					= 64 Sft
Total:-				=	540 Sft
				@	678.55 P.Sft

Rs366,417

22 Providing and fitting all types of glazed aluminium windows of anodised/ powder coated partly fixed and partly sliding using delux sections of approved manufacturer having frame size of 100 x 30 mm (4"x1-1/4") and leaf frame sections of 50 x 20 mm (2"x3/4"), all of 1.6mm thickness including 5 mm thick imported tinted glass with rubber gasket using approved standard latches, hardware etc., as approved by the Engineer in-charge.

W1	18	x	6	x	6	=	648	Sft
W2	18	x	4	x	6	=	432	Sft
W3	18	x	6	x	2	=	216	Sft
Total:-				=	1296	Sft		
				@	1348.40	P.Sft		

Rs1,747,526

23 Providing and fixing Aluminum Fly screen comprising of Fiber / Aluminum wire guaze (Malasian) fixed in aluminum frame of approved manufacturer/powder coated of size 1-1/2" x 1/2" and 1.6 mm thick with rubber gasket i/c cost of Hardwares as approved and directed by the engineer incharge. complete in all respect.

W1	18	x	3	x	6	=	324	Sft
W2	18	x	4	x	6	=	432	Sft
W3	18	x	3	x	2	=	108	Sft
Total:-				=	864	Sft		
				@	493.05	P.Sft		

Rs425,995

24 Providing and fixing M.S grill for aluminum windows consisting of M.S square pipe frame 1"x1" 18 SWG and 3/8" x 3/8" M.S square bars 4" c/c welded to each and other to frame horizontally / vertically as per approved drawing and design i/c hold fast embedded in cement concrete (1:2:4) and enamel painting 3- coats etc. complete in all respect and as directed by the Engineer Incharge".

18	x	6	x	6	=	648	Sft
18	x	4	x	6	=	432	Sft
18	x	6	x	2	=	216	Sft
Total:-				=	1296	Sft	
				@	855.35	P.Sft	

Rs1,108,534

25 Providing and fixing lead lining 2mm thick lead sheet with wall for radiation protection upto roof height as per instruction and covering with MDF board 3/4" thick paneling including frame of kail wood 1-1/2" x 2" including termite proofing and fency deodar wood beading complete in all respect as approved by the Engineer Incharge. Also Approved by the Radiation Protecting Agency.

X-Ray Room	1	x	15.6	x	18.875	=	294	Sft
	2	x	15.75	x	12	=	378	Sft
	2	x	18.88	x	16	=	604	Sft
Dark Room	2	x	9.25	x	8.5	=	157	Sft
	2	x	9.25	x	12	=	222	Sft
	2	x	9.25	x	9	=	167	Sft
Store	2	x	18	x	16	=	576	Sft

~~2 x 12 x 13~~

Total. = ~~212~~ Sft = ~~2710~~ Sft 1276

@ ~~855.35~~ P.Sft 2000 Rs2,318,170
2552000

26 Providing and fixing G.I. wire gauze 24 SWG, 12x12 meshes per square inch, fixed to steel windows or doors, etc., complete in all respects.

2 x 8 x 12 x 8 = 1536 Sft
2 x 6 x 10 x 12 = 1440 Sft
2 x 4 x 8 x 8 = 512 Sft
Total:- = 3488 Sft

@ 144.30 P.Sft Rs503,318

27 Providing and fixing 30mm thick Wood plastic composite door or equivalent with Fiber Glass Sheet 3 Layers, 3mm thick on both sides double lipping around shutter including fittings, hinges with 8" high S.S Kick plate on both sides complete in all respects.
Public Toilets 1 x 27 x 2.5 x 7

= 473 Sft
Total:- = 473 Sft

@ 720.00 P.Sft 880 Rs340,200
402080

28 Extra for providing and fixing approved quality rim lock adjustable over the style surface.

1 x 24 = 24 No.
Total:- = 24 No..

@ 999.00 Each Rs23,976

29 Providing and fixing stainless steel edge protection sheet on corners, column corners with all required accessories etc complete in all respects as approved by the Engineer Incharge.

4 x 78 = 312 Sft
1 x 112 = 112 Sft
3 x 85.5 = 257 Sft
2 x 64 = 128 Sft
1 x 112 = 112 Sft
2 x 38.5 = 77 Sft
Total:- = 998 Sft

@ ~~320.00~~ P.Sft 550 Rs48,900
Rs818,360

30 P/F Hydraulic Door Closer best quality made including cost of nail and screws etc complete in all respects as approved by the Engineer Incharge.

1 x 24 = 24 No.
Total:- = 24 No..

@ 2932.00 Each Rs70,368

31 P/F fancy LED light 2' x 2' including LED light and driver 36W philips / ALPHA / ULTRA SLIM or equivalent including in false ceiling and electric connection complete in all respects as approved by the Engineer Incharge.

2 x 22 = 44 No.
Total:- = 44 No.

@ 8000.00 Each Rs352,000

32 Single layer of tiles 9"x4½"x1½" (225x113x40 mm) laid over 4" (100 mm) earth and 1" (25 mm) mud plaster without Bhoosa, grouted with cement sand 1:3 on top of RCC roof slab, provided with 34 lbs. per %Sft. or 1.72 Kg/Sq.m bitumen coating sand blinded.

Total:- = 35062 Sft @ 11952.80 %Sft

32-a) P/L 1" thick Roof insulation

35062 x 6939/83 Rs4,190,873
Rs 2,433,353

33 Khuras on roof 2'x2'x6" (600 x 600 x 150 mm)

= 27 Nos
Total:- = 27 Nos

@ 854.35 Each Rs23,067

34 Providing, laying, cutting, jointing, testing and disinfecting pipe line in trenches with PVC/ uPVC pipes of B.S.S. with 'D' Class working pressure complete in all respects:- 4" i/d (100 mm)

27 x 12 = 324 Rft
Total:- = 324 Rft

@ 757.95 P.Rft Rs245,576

35 Providing and installing P.V.C. bends, of B.S.S. Class 'D' working pressure:- 4" i/d (100 mm)

27 = 27 Nos
Total:- = 27 Nos

36 Electric Installation Work.

Emergency. 1 x 1 x 35062 x 135.25 x 64

@ 795.55 Each Rs21,480
 = 35062 Sft
 = 8656 Sft
 Total:- = 26406 Sft
 @ 227.00 P.Sft Rs5,994,129

37 Installation of P.H work

26406

= 26406 Sft
 Total:- = 26406 Sft
 @ 120.00 P.Sft Rs3,168,702

39 Recovery of old materials

i Tiles 35062 x 0.6 x 3.6
 (9"x4.5"x1.5")
 ii Tiles bats 35062 x 0.4 x 0.1666

= 75734 Nos
 @ 4500.00 %0Nos Rs340,801
 = 2337 Cft
 @ 2500.00 ~~Sft~~ Rs58,413
 = 49 ~~N,Cft~~
 @ 2500.00 ~~Cft~~ Rs1,225
 = 54 Cft
 @ ~~2500.00~~ %Cft Rs1,350 ~~20000~~

iii Door

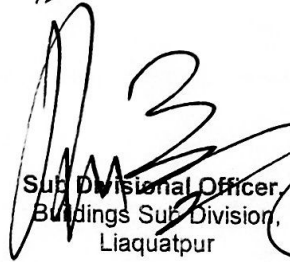
iv Window

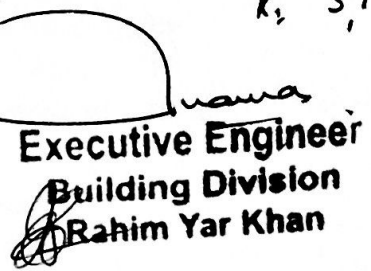
v L.S (S.D & EI)

= - 200000

D/d Total: = 883714 Rs401,789
 Net Total: = Rs86,130,958
 Rs, 37718722
 Rs, 377,19,000


 Sub Engineer


 Sub Divisional Officer,
 Buildings Sub Division,
 Liaquatpur


 Executive Engineer
 Building Division
 Rahim Yar Khan

OPD Corridor

1 x 63.75 x 9.0

3 Providing and laying superb quality Porcelain glazed tiles flooring of MASTER brand of specified size in approved design, Color and Shade with adhesive/bond over 3/4" thick (1:3) cement plaster i/c the cost of sealer for finishing the joints i/c cutting grinding complete in all respect as approved and directed by the Engineer Incharge. 600mm x 600 mm

OPD Corridor 1 x 63.75 x 9.0

OPD back side 1 x 49 x 12.0

Total = 574 Sft

= 1162 Sft

@ 2335.85 %Sft

Rs27,137

4 Providing and laying superb quality Porcelain glazed tiles of Master brand, skirting/dado of specified size, Color and Shade with adhesive/ bond over 1/2" thick (1:2) cement plaster i/c the cost of and sealer for finishing the joints, cutting grinding complete in all respect as approved and directed by the Engineer Incharge. ii) 600mm x 600 mm.

OPD back side 2 1 (63.75 + 9.0) 5 = 728 Sft

OPD back side 2 1 (49 + 12.0) 5 = 610 Sft

Total = 1338 Sft

@ 340.50 P.Sft

Rs395,576

5 Providing and laying Full body Glazed tiles superb quality Porcelain glazed tiles flooring of MASTER brand of specified size in approved design, Color and Shade with adhesive / bond over 3/4" thick (1:3) cement plaster i/c the cost of sealer for finishing the joints i/c cutting grinding complete in all respect as approved and directed by the Engineer Incharge.

(Non-Skid Chequered Tiles) 300mm x 300mm

2 x 24 x 6.0

Total = 288 Sft

= 288 Sft

@ 204.55 P.Sft

Rs58,910

6 Cement plaster 1:4 upto 20' (6.00 m) height:-1/2" (13 mm) thick After Removing.

Perapit 2 x 683.5 x 2.5

Total:- = 3418 Sft

= 3418 Sft

@ 3664.90 %Sft

Rs125,248

7 Single layer of tiles 9"x4 1/2"x1 1/2" (225x113x40 mm) laid over 4" (100 mm) earth and 1" (25 mm) mud plaster without Bhoosa, grouted with cement sand 1:3 on top of RCC roof slab, provided with 34 lbs. per %Sft. or 1.72 Kg/Sq.m bitumen coating sand blinded.

OPD 1 x 121.5 x 53.5 = 6500 Sft

Khura -10 x 2 x 2 = -40 Sft

Total:- = 6540 Sft

@ 11952.80 %Sft

6540 @ 6939/58

Rs781,743

R. 453847

8 Khuras on roof 2'x2'x6" (600 x 600 x 150 mm)

Total:- = 27 Nos

= 27 Nos

@ 854.35 Each

Rs23,067

9 Providing and applying weather shield paint of approved quality on external surface of building including preparation of surface, application of primer complete in all respect: old surface after scraping.

Delysis 2 x 123 x 29 = 7134 Sft

Delysis 2 x 55 x 29 = 3190 Sft

OPD 1 x 688.5 x 16 = 11016 Sft

Total:- = 21340 Sft

@ 5045.30 %Sft

Total: = Rs1,076,667

~~Rs3,636,397~~

406245

Recovery of old materials

Tiles (9"x4.5"x1.5") 6540 x 0.6 x 3.6 = 14127 Nos

Tiles bats 6540 x 0.4 x 0.1666 = 436 Cft

@ 2500.00 %Cft

D/d Total: = Rs10,896

Total: = Rs74,467

40 (6000)

Rs2,501,929

[Signature]
Sub Engineer

[Signature]
Sub Divisional Officer
Building Sub Division
Lakhatpur

[Signature]
Executive Engineer
Building Division
Rahim Yar Khan

**DETAILED ESTIMATE FOR "FOR REVAMPING OF THQ
HOSPITAL, LIAQUAT PUR DISTRICT RAHIM YAR KHAN."
ADP NO.6582022-23.**

ABSTRACT OF COST

EXTERNAL DEVELOPMENT

1 Provision of Water Supply

Rs: 156000

2 Provision of Sewerage

Rs: 1190000

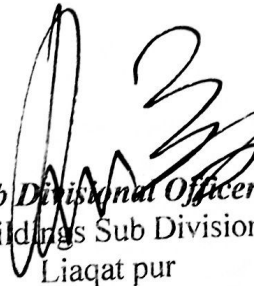
Total Rs: 1346000

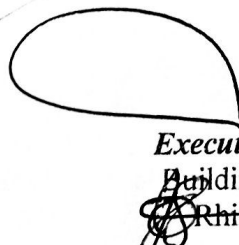
Add 03% Contingency Rs: 40380

Total Rs: 1386380

Say Rs: 1386000


Sub Engineer


Sub Divisional Officer
Buildings Sub Division
Liaquat pur

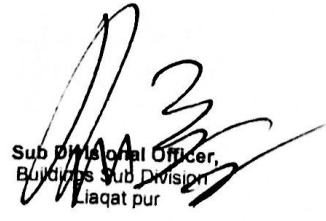

Executive Engineer
Buildings Division
Rhimyarkhan

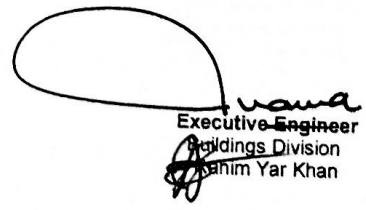
**ROUGH COST ESTIMATE FOR THE SCHEME "PROGRAM FOR REVAMPING OF ALL THQ
HISPITAL IN PUNJAB ONE AT THQ LIAQATPUR DISTRICT RAHIM YAR KHAN." ADP
NO.658/2022-23.**

**MRS, 2nd BI-ANNUAL-2022 (01.07.2022 to 31.12.2022) DISTRICT RAHIMYAR KHAN
WATER SUPPLY**

1	Excavation of trenches in all kinds of soil, except cutting rock, for watersupply pipelines upto 5 ft. (1.5 m) depth from ground level, including trimming, dressing sides, leveling the beds of trenches to correct grade and cutting pits for joints, etc. complete in all respects. (120+110) 230 x 1 x 2.5	=	575	Cft	
		Total	=	575	Cft
			@	7622.75	%0Cft
					Rs4,383
2	Providing, laying, cutting, jointing, testing and disinfecting High Density Polyethylene Pipe (HDPE-100) working pressure pipe, Beta / Dadex / Popular / IIL or equivalent, in trenches, as approved & directed by the engineer incharge, complete in all respects. PN-16 (SDR-11) 2" Dia	=	230	Rft	
		Total	=	230	Rft
			@	349.75	P.Rft
					Rs80,443
3	Rehandling of earthwork: Lead upto a single throw of Kassi, phaorah or shovel Take same as item no.01	=	575	Cft	
		Total	=	575	Cft
			@	2539.70	%0Cft
					Rs1,460
4	Making connection for new watersupply lines with the running main, including excavation of trench and refilling, complete, but excluding cost of pipe and specials, etc. Diameter of running main: upto 6" i/d (150 mm)	=	3	No.	
		Total	=	3	No.
			@	2952.20	Each
					Rs8,857
5	Providing, laying, testing and commissioning of POLYPROPYLENE RANDOM COPOLYMER (PPRC) water supply pipe (Dadex/Popular/Beta or equivalent) with specified pressure rating PN (PRESSURE NOMINAL) and conforming to DIN 8077-8078 code i/c cost of solvent, specials, making jharries complete in all respect as approved and directed by Engineer Incharge. (Internal/External Diameters mentioned). PN-20 pipe (i) (3/4") 25 mm (ii) (1") 32 mm	=	410	Rft	
		Total	=	410	Rft
			@	66.50	P.Rft
					Rs27,265
			=	310	Rft
		Total	=	310	Rft
			@	106.90	P.Rft
					Rs33,139
			Total:	=	Rs155,547
			SAY:	=	Rs156,000


Sub Engineer


Sub Divisional Officer,
Buildings Sub Division
Liaquat pur


Executive Engineer
Buildings Division
Rahim Yar Khan

ROUGH COST ESTIMATE FOR THE SCHEME "PROGRAM FOR REVAMPING OF ALL THE HOSPITAL IN PUNJAB ONE AT THQ LIAQATPUR DISTRICT RAHIM YAR KHAN." ADP

NO.658/2022-23.
MRS, 2nd BI-ANNUAL-2022 (01.07.2022 to 31.12.2022) DISTRICT RAHIMYAR KHAN

SEWERAGE SYSTEM

1 Earth work excavation in open cutting for sewers and manholes as shown in drawing including shuttering of wooden vertical planks, struts and beams, dressing to correct section and dimension according to templates and levels and removing surface water in all types of soil except shingle, gravel and rock.
 0 ft. to 7.0 ft. (0 to 2.10 m) depth

6" Dia	(120+80)							
	200	x	1	x	2.5	=	500	Cft
9" Dia	(120+180)							
	300	x	1.5	x	2.5	=	1125	Cft
12" Dia	(390+280)							
	670	x	1.5	x	2.5	=	2513	Cft
						=	4138	Cft
						Total		
							@ 11740.40	%0Cft
								Rs48,582

2 Providing and laying non-reinforced concrete pipe, moulded with cement concrete 1:1½:3, conforming to ASTM Specification C-14-73, Class 2, including carriage of pipe from factory to site of work, lowering in trenches to correct alignment and grade, jointing, cutting pipe where necessary, finishing and testing, etc. complete.

6" Dia	200					=	200	Rft	
						@	118.90	P.Rft	Rs23,780
9" Dia	300					=	300	Rft	
						@	191.05	P.Rft	Rs57,315
12" Dia	670					=	670	Rft	
						@	695.60	P.Rft	Rs466,052

3 Construction of Manhole etc complete.

						=	14	Nos.	
						@	41700.00	Each	Rs583,800

4 Rehandling of earthwork: Lead upto a single throw of Kassi, phareh or shovel

Take same as item no.01

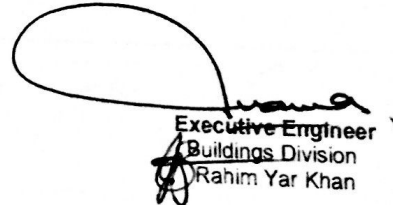
						=	4138	Cft	
						Total			
						=	4138	Cft	
						@	2539.70	%0Cft	Rs10,509

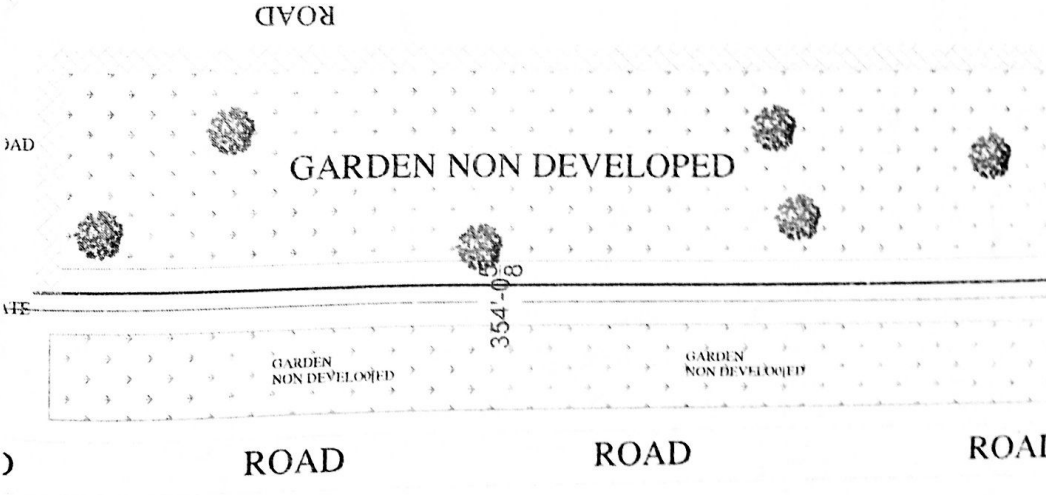
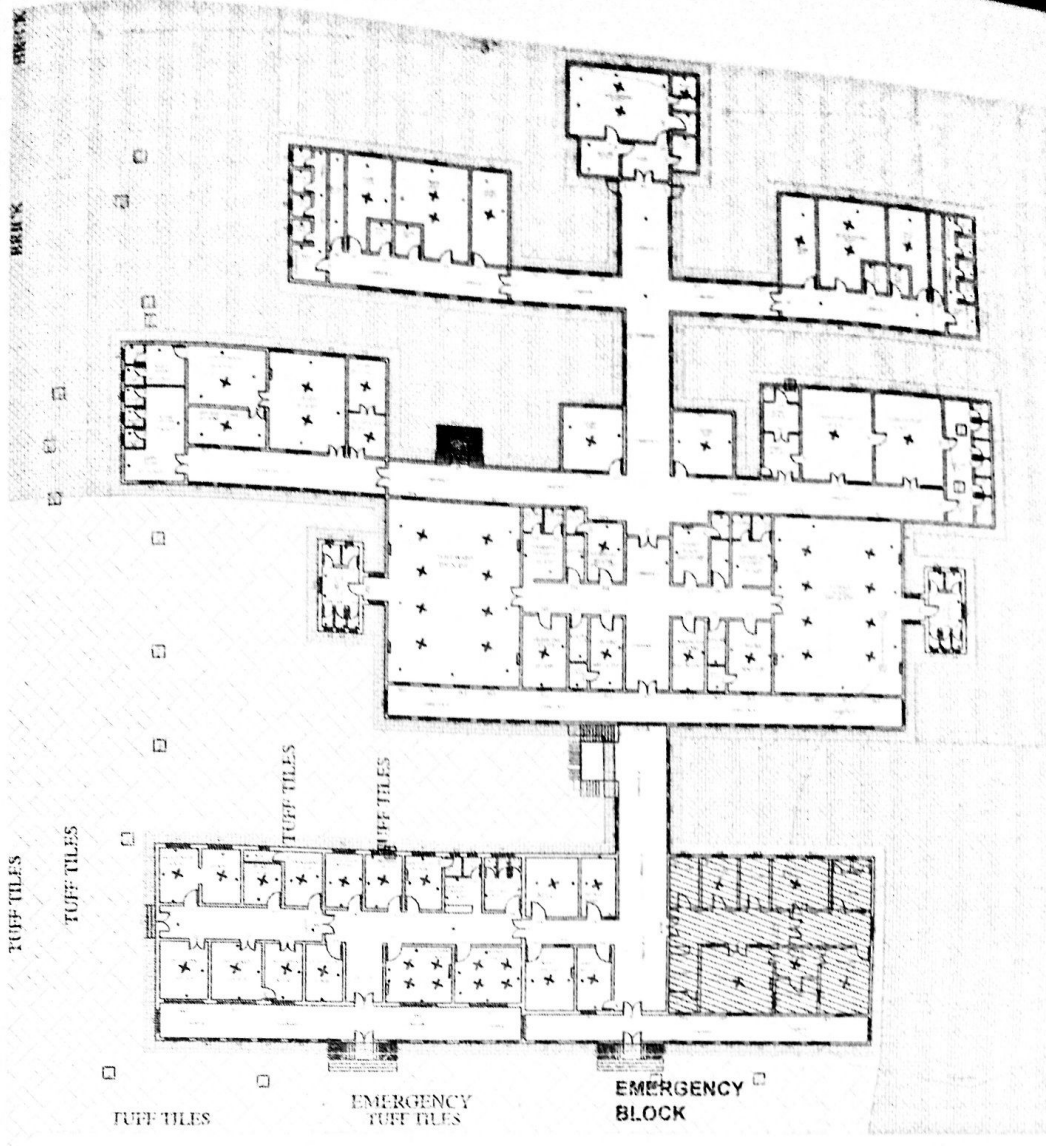
Total: = Rs1,190,038

SAY: = Rs1,190,000


 Sub Engineer


 Sub Divisional Engineer,
 Buildings Sub Division
 Liaqat Pur


 Executive Engineer
 Buildings Division
 Rahim Yar Khan



[Handwritten signatures]

[Handwritten signature]
 Executive Engineer
 Building Division
 Rahim Yar Khan



FACILITIES BEING ESTABLISHED

- OPERATIONS OF EMERGENCY
- RESUSCITATION
- GARDENS
- LABS
- DIAGNOSTIC
- X-RAY
- MORTUARY
- YELLOW ROOM
- BATHING FACILITY
- GARDEN

SERVICES TO BE OUTSOURCED

- SHIP
- MAINTENANCE
- SECURITY
- CLEANING
- LAUNDRY
- WASTE DISPOSAL

THEMATIC AREAS OF MISDS

- 24 HOUR SERVICE
- CARE OF PATIENTS
- PATIENTS' COMPLAINTS
- HOSPITAL INFRASTRUCTURE
- CONSTRUCTION QUALITY MANAGEMENT
- FACILITIES MANAGEMENT
- HUMAN RESOURCES
- INFORMATION MANAGEMENT SYSTEMS

IT INTERVENTIONS

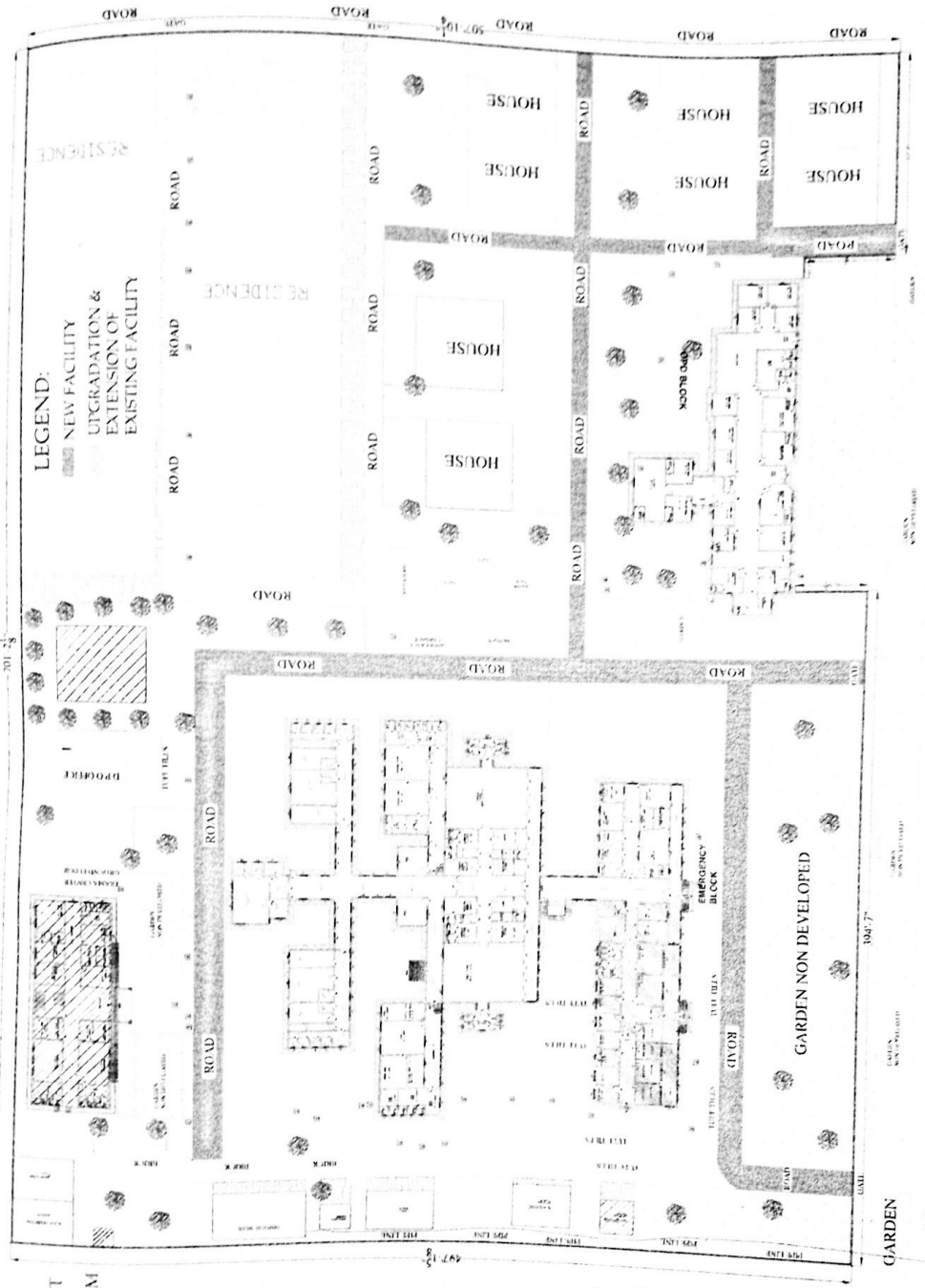
- HEALTH INFORMATION SYSTEMS
- ELECTRONIC MEDICAL RECORDS

NEW MANAGEMENT STRUCTURE

- NMS
- CONSULTANTS
- NURSES
- PHARMACISTS
- ALLIANCE
- PHARMACEUTICALS
- PHARMACEUTICALS



BY: PROJECT MANAGEMENT UNIT
PRIMARY & SECONDARY
HEALTH CARE DEPARTMENT
GOVT OF PUNJAB



MASTER PLAN OF THQ HOSPITAL LIAQATPUR



[Handwritten signatures and names]
 Dr. Javed Iqbal
 Dr. Farhatullah Khan
 Dr. Farhatullah Khan

8. ANNUAL OPERATING COST (POST COMPLETION)

Financial Components: Capital
Cost Center:OTHERS- (OTHERS)
Fund Center (Controlling):LE4203

Grant Number:Government Buildings - (PC12042)
LO NO:LO22010069
A/C To be Credited:Account-I

PKR Million

Sr #	Object Code	2025-2026		2026-2027		2027-2028		2028-2029		2029-2030	
		Local	Foreign	Local	Foreign	Local	Foreign	Local	Foreign	Local	Foreign
1	A05270-To Others	0.000	0.000	0.000	0.000	0.000	0.000	0.000	0.000	0.000	0.000
2	A12403-Other Buildings	0.000	0.000	0.000	0.000	0.000	0.000	0.000	0.000	0.000	0.000
Total		0.000	0.000	0.000	0.000	0.000	0.000	0.000	0.000	0.000	0.000

Financial Components: Capital
Cost Center:OTHERS- (OTHERS)
Fund Center (Controlling):LE4203

Grant Number:Government Buildings - (PC12042)
LO NO:LO22010069
A/C To be Credited:Account-I

PKR Million

Sr #	Object Code	2025-2026		2026-2027		2027-2028		2028-2029		2029-2030	
		Local	Foreign	Local	Foreign	Local	Foreign	Local	Foreign	Local	Foreign
1	A12403-Other Buildings	0.000	0.000	0.000	0.000	0.000	0.000	0.000	0.000	0.000	0.000
2	A05270-To Others	0.000	0.000	0.000	0.000	0.000	0.000	0.000	0.000	0.000	0.000
Total		0.000	0.000	0.000	0.000	0.000	0.000	0.000	0.000	0.000	0.000

8. Annual Operating and Maintenance Cost after Completion of the Project

The Annual operating and maintenance cost after completion of the project will be borne by the concerned District Health Authority (DHA) as well as Primary and secondary healthcare Department, Lahore.

9. DEMAND AND SUPPLY ANALYSIS

Semi modern health facilities and scientific diagnostics are presently available in this Hospital. This initiative of revamping Hospital will cover all departments and components of healthcare including Medical, Surgical, psychiatric, Cardiac, ENT, Ophthalmic and Pediatrician components. Moreover, women health components i.e. Gynecology and obstetric will also be emphasized upon. In emergency, calamities and natural disasters, valuable lives will be saved through revamping of Emergency Units.

10. FINANCIAL PLAN AND MODE OF FINANCING

10.1 FINANCIAL PLAN EQUITY INFORMATION

10.2 FINANCIAL PLAN DEBT INFORMATION

undefined

10.3 FINANCIAL PLAN GRANT INFORMATION

Attached

8. Financial Plan and Mode of Financing

The project will be executed / financed through Annual Development Program under the sector Primary and Secondary Healthcare Department, the Government of Punjab. Year wise financial utilization is as under:

Revenue Side

(Rs.in Million)

Year	2017-18	2018-19	2019-20	2020-21	2021-22	2022-23	Total
Funds Released	60.000	28.140	2.196	1.936	4.212	7.423	103.907
Utilization	22.793	28.004	2.141	1.744	4.076	0.876	59.636

Capital Side:

Year	2017-18	2018-19	2019-20	2020-21	2021-22	2022-23	Total
Funds Released	0	0	0	0	0	10.000	10.000
Utilization	0	0	0	0	0	0	0

Balance funds may be provided for completion of the project in subsequent years through ADP

10.4 WEIGHT COST OF CAPITAL INFORMATION

undefined

11. PROJECT BENEFITS AND ANALYSIS

11.1 PROJECT BENEFIT ANALYSIS INFORMATION

Social Benefits with Indicators

Social economic burden will be decreased due to availability of better medical services in the district. Time and money of community will be saved which were expended in other cities like Lahore Islamabad etc. on treatment of patients and for boarding and logging of attendants. The social status of community will rise.

11.3.1 Social Impact:

A number of patients lose their lives or suffer serious disabilities for want of timely access to the health facilities. The project will ensure that no one is left to reach the health facilities. The most important beneficiaries will be mothers having complicated delivery conditions. The number of patients transferred to the health facilities for treatment and lifesaving will serve as indicators for performance evaluation. In long term the project will help in improving socio-economic indicators of IMR and MMR.

Employment Generation (Director and Indirect)

Revamping of this Hospital will lead to generation of employment for highly skilled /professional staff and unskilled staff leading to reduction of unemployment. Huge employments opportunity will be created from the establishment of the project. The Medical doctors and paramedics who are trained in this discipline or intended to specialize in this field can make maximum use of training. A large number of gazette and non-gazette posts will be available for employment directly or indirectly.

11.2 ENVIRONMENTAL IMPACT ANALYSIS

Environmental Impact

It will have no hazardous effect on the environment. On the other hand, addition of horticulture and landscaping will provide healthy environment to the general public. All the more, the program is environment friendly having no adverse environmental effects. Simultaneously, this shall further improve environment by creating sense of responsibility among employed and beneficiaries of the service.

11.3 PACT ANALYSIS

undefined

11.4 ECONOMIC ANALYSIS

Impact of Delays on Project Cost and Viability

Delay in the implementation of the project will lead to increase in cost and increase financial burden on the Government and general population of Punjab. Since the project is one of the major needs and a long awaited desire of the community, therefore, Government of the Punjab contemplated

plan for early execution of Revamping of Emergency Units. The delay will not only deprive the patients of the state of the art facility but also distort the public image of the Government

11.5 FINANCIAL ANALYSIS

Financial Benefits & Analysis

Tremendous public benefits will be accrued from revamping of Emergency Units:

The Targets of Sustainable Development Goals (SDGs) will be achieved

The Human Development Index of Pakistan (HDI) will improve

Infant Mortality Rate will decrease

Mother Mortality rate will be decreased

The international commitments of Pakistan will be accomplished

Health standard of public will

Better Health Facilities to mother and

Prompt and scientific facility for operation

Rehabilitation of disables and injured

Blindness in this area will be decreased and controlled

Better social and mental health to addict

Provision of better health facilities at doorsteps

Awareness and control for communicable

Survival of heart failure

Social indicators of Pakistan will improve

This will decrease load of patients on teaching hospitals and specialized institutions by promoting physical and mental health. By adopting preventive and Hygienic principles, the number of patients and diseases will decrease. Resultantly budget load of Government for treatment will decrease and saving will be utilized for development programs.

11.1.1 Financial Impact:

In the beginning, It is extremely difficult to put a money value on each life saved by taking/shifting a critically ill patient to the appropriate health facility for treatment. However, the exact amount spent shall be calculated against each patient shifted by analyzing data collected during operations.

11.2 Revenue Generation

Revenue will be generated from:

Indoor fee

Laboratory fees

Diagnostic facility fees

Dental fee

ECG fee

Private room charges

Ambulance charges

From other fees prescribed by Government

12. IMPLEMENTATION SCHEDULE

12.1 IMPLEMENTATION SCHEDULE/GANTT CHART

Original Gestation period (From September, 2017 to June, 2019)

Extension in Gestation period for one year with no change in cost & Scope till June 2020.

1st Revised gestation period till June, 2021

2nd Revised gestation period till June, 2023.

3rd Revised gestation period till June, 2025

12.2 RESULT BASED MONITORING (RBM) INDICATORS

undefined

12.3 IMPLEMENTATION PLAN

undefined

12.4 M&E PLAN

The operation team will monitor the progress of the project and will hold regular weekly meeting to review the progress under the supervision of Project Director.

12.5 RISK MITIGATION PLAN

attached

RISK REGISTER

Programme for Revamping of all THQ Hospitals in Punjab

RISK DATA				Pre-Mitigation / Current			MITIGATION
				Qualitative Assessment			
Risk Item No	Risk Description/Event	Cause	Effect / Consequences	Likelihood (1 to 3)	Impact (1 to 3)	Risk Score (1 to 9)	Mitigation / Actions
1	Due date for the completion of some hospital sites may be extended due to increase in scope from the Client	Direct instructions from the Medical Superintendents / Hospital Administration to revamp the remaining areas	Significant scope increase requested by the Hospital administration will result in: 1. Project delays 2. Contractor claims 3. Increase in project cost along with variations	3	3	9	Hospital administration is requested to finalize the scope during joint field visits of C&W and PMU
2	Various unexpected structural issues are being encountered	Unforeseen structural issues are expected to face during execution in hospital buildings approaching end of life	1. Stoppage of work 2. Performance of the Contractor has affected 3. Delays in the project	3	3	9	Various items which are unforeseen and expected to be used during execution may be taken in estimates so that those can be executed to address these issues
3	Change in management of the Client	Management change	Re-briefing is to be carried out	2	2	4	Acceleration of understanding for smooth and expeditious transition, without affecting the project
4	Financial Issues	Funds for these schemes should be provided as per the targets	1) Delay in tendering 2) Effect on quality as the Consultant supervision will not take place 3) Inconvenience to the patients	3	3	9	Approval of PCIs and early release of funds is requested
5	Nationwide spread of pandemic i.e. COVID-19 in 2nd and 3rd quarter of this year	Work delays during nationwide lockdown.	1) Delays in completion of works 2) Claim requests received by Contractor and Consultant	3	3	9	Contractor will be asked to depute fully vaccinated labor

12.6 PROCUREMENT PLAN

undefined

13. MANAGEMENT STRUCTURE AND MANPOWER REQUIREMENTS

The Organogram of New Management Structure is available in PC-I

14. ADDITIONAL PROJECTS / DECISIONS REQUIRED

NA

15. CERTIFICATE

Focal Person Name:Mr. KHIZAR HAYAT

Designation:Project Director, PMU P&SHD

Email:

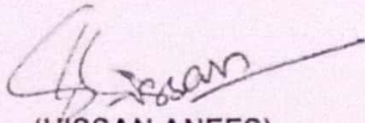
Tel. No.:

Fax No:

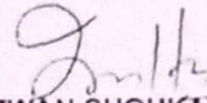
Address:31/E1, Shahrah-e-imam Hussain? Road? Block E 1 Gulberg III, Lahore, Punjab

15. It is certified that the project titled "Revamping of THQ Hospital Liaquatpur.
(3rd Revised)" has been prepared on the basis of instruction provided by the Planning
Commission for the preparation of PC-I for Social Sector projects.

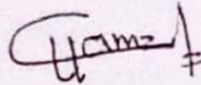
Prepared By:



(HISSAN ANEES)
DIRECTOR PLANNING & HR, PMU,
PRIMARY & SECONDARY HEALTHCARE
DEPARTMENT, LAHORE
(042-99231206)
(Oct-2022)

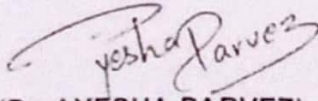


(RIZWAN SHOUKAT)
PROCUREMENT SPECIALIST, (PMU),
PRIMARY & SECONDARY HEALTHCARE
DEPARTMENT, LAHORE
(042-99231206)
(Oct-2022)



(HAMZA NASEEM)
PROJECT MANAGER CIVIL, PMU,
PRIMARY & SECONDARY HEALTHCARE DEPARTMENT, LAHORE
(042-99231206)
(Oct-2022)

Checked By:



(Dr. AYESHA PARVEZ)
DEPUTY PROJECT DIRECTOR (PMU),
PRIMARY & SECONDARY HEALTHCARE
DEPARTMENT, LAHORE
(042-99231206)
(Oct-2022)



(KHIZAR HAYAT)
PROJECT DIRECTOR (PMU),
PRIMARY & SECONDARY HEALTHCARE
DEPARTMENT, LAHORE
(042-99231206)
(Oct-2022)

Approved By:



(DR. IRSHAD AHMAD)
SECRETARY,
GOVERNMENT OF THE PUNJAB
PRIMARY & SECONDARY HEALTHCARE DEPARTMENT, LAHORE
(042-99204567)
(Oct-2022)

